

# BRANTFORD BUSINESS DIRECTORY

The Brantford Daily and Weekly Courier appeals to an exclusive clientele. Your card placed in this directory will be an invitation into the best homes. Phone 139 and we will quote you prices

**The Gilbert Realty Co.**  
ROOM 9, TEMPLE BUILDING  
Brantford, Ontario

**Mitchell's Garage**  
Storage - Accessories - Repairs  
55 Darling St., Brantford, Ont

**ASPENCE & SONS**  
Established 1877. Carriage, wagon, and sleigh manufacturers, repairing and painting of all kinds of vehicles, automobile painting, and auto tops.  
272-282 Colborne Street.

**E. V. CAMPION & CO.**  
REAL ESTATE  
List your Brantford Real Estate business or residential property with us and insure a quick sale. Also list your houses and vacant rooms for rental. 52 Market Street.

**CUSTOM TAILOR**  
I can save you money on your winter suit or overcoat by selecting from our large range of samples. We do all kinds of repairing.  
J. ARMITAGE, 268 Colborne St.

**Dr. G. A. Elliott**  
DENTIST  
20 Market Street  
Brantford

**PICKLES' BOOKSTORE**  
Everything in newspapers, magazines and stationery. We do picture framing in a way that will please you. 72 Market Brantford, Phone 909.

**DYEING AND CLEANING**  
Let us call for your work. We specialize in the most delicate colors. Absolutely all work done on the premises. Office and plant, 29 Colborne St. Both phones 565. C. A. Bennett.

**PHOTO SUPPLIES**  
Picture sale, now on; all oil paintings at cost. Photo supplies of all kinds always fresh. Films developed 5 cents. AYLIFFE'S, 332 Colborne Street, Phone 1564.

**HAIR GOODS**  
Our large stock, embracing everything in hair goods is at your disposal. We do all kinds of hair work, hair dressing, expert manicuring, etc. Mrs. J. Bush & Co., 112 Dalhousie St.

**GENERAL REPAIRING.**  
Automobiles, motor cycles, sewing machines, bicycles and gasoline engines. Work done promptly, at the right price in an expert manner. Nicholls & Rodjenski, 47 Dalhousie.

**PLUMBING AND HEATING**  
Let us figure on your work. We do a general plumbing business and employ none but competent workmen. Brantford Plumbing & Heating Co., 148 Dalhousie St. Phone 1696.

**THE BAIRD STUDIO**  
EVERYTHING IN PHOTOGRAPHY.  
Amateur Developing and Printing.  
70, 72 Colborne St., Brantford.

**ARCHITECTS**  
LLOYD D. BARBER  
ARCHITECT  
Temple Building  
BRANTFORD  
Phone 1228

**CONFECTIONERY AND LUNCH**  
THE TEA POT INN  
Tea as You Like It  
134 Dalhousie Street  
Opposite Market

**ALL KINDS OF FURNITURE BOUGHT AND SOLD**  
New and Second, at  
**Woods Furniture Store**  
49 George Street  
Strickland's Old Stand

## RAILWAY TIME TABLE

**GRAND TRUNK RAILWAY CO.**  
Main Line—Going East  
1.46 a.m., New York Express—Daily for Hamilton, Niagara Falls, New York.

5.15 a.m., Lehigh Express—Daily for Hamilton, St. Catharines, Niagara Falls.

6.50 a.m., Toronto Express—Daily except Sunday for Hamilton, Toronto, Belleville, Kingston, Montreal, Portland, Quebec, Boston.

9.30 a.m., Express—Daily except Sunday for Hamilton, Toronto, Niagara Falls and intermediate points.

10.29 a.m., Ontario Limited—Daily except Sunday, for Hamilton and Toronto. Connects at Toronto with express for Barrie, Orillia, N. Rth Bay, also for Port Hope, Peterboro, and points east.

1.42 p.m., Atlantic Express—Daily for Hamilton, Niagara Falls, Buffalo and points east, also Toronto.

4.35 p.m., Express—Daily except Sunday, for Hamilton, St. Catharines, Niagara Falls, Toronto and intermediate stations. Connects at Toronto for Windsor and Peterborough.

6 p.m., Toronto Express—Daily for Hamilton, Toronto, Montreal, Niagara Falls, Buffalo and New York. Connects at Toronto with Cobalt Special for North Bay, Temagami, Cobalt, New Liskeard and Englehart.

8.19 p.m., Eastern Flyer—Daily for Hamilton, Toronto, Brockville, Ottawa, Montreal, Portland and Boston.

Main Line—Going West

2.27 a.m., Chicago Express—Daily for Woodstock, Sarnia, Port Huron, Detroit and points in Western States, St. Paul, Winnipeg, etc.

9.05 a.m., Express—Daily except Sunday for Woodstock, London, Stratford, Waufray, Petrolia, Sarnia, Port Huron, Glencoe, Chatham, Windsor, Detroit and in intermediate stations.

9.4 a.m., Lehigh Express—Daily for London, Petrolia, Sarnia, Port Huron, Chatham, Windsor, Detroit. Solid vestibule train to Chicago, connecting with all trains west, north-west and southwest.

10.00 a.m., Chicago Express—Daily for London, Sarnia, Port Huron, Detroit and Chicago.

3.01 p.m., Express—Daily except Sunday for Paris.

4.35 p.m., Pacific Express—Daily for Paris, Woodstock, London, Petrolia (except Sunday) Sarnia, Port Huron, Chicago and Western points.

6.58 p.m., International Limited—Daily for Woodstock, Ingersoll, London, Glencoe, Chatham, Windsor, Detroit, Sarnia, Port Huron, Chicago.

8.10 p.m., Express—Daily except Sunday for Paris, Woodstock, Ingersoll, London and intermediate stations.

Galt, Guelph and North Division

6.05 a.m., Daily except Sunday for Harrisburg and St. George.

8.55 a.m., Daily except Sunday for Harrisburg, Galt, Guelph, Palmerston, Durham, Kincardine, Owen Sound, Southampton, Warton and intermediate stations.

11.15 a.m., Daily except Sunday for Harrisburg, Galt, Preston, Hespler, and Guelph.

4.05 p.m., same as the 9.10 a.m.

6.15 p.m., Daily except Sunday for Harrisburg.

8.30 p.m., same as the 11.15 a.m.

Buffalo and Goderich Division

10.05 a.m., Daily except Sunday for Paris, Drumbo, Bright, Stratford, Goderich and intermediate stations.

10.05 a.m., Daily except Sunday for Black Rock, Buffalo and intermediate stations.

10.35 a.m., Daily except Sunday for Caledonia, Dunnville, Port Colborne, and stations.

6.00 p. m., Daily except Sunday for Caledonia, Dunnville, Port Colborne, Black Rock, Buffalo and intermediate stations.

8.25 p.m., Daily except Sunday, for Paris, Stratford, Goderich and intermediate stations.

Brantford and Tilsonburg Division

10.35 a.m., Daily except Sunday for

## HAROLD GREASER

**Insurance and Real Estate**  
Brantford, Ont

**E. G. ANDRICH**  
IMPORTER.  
Wines, Liquors, Ales, Porter and Lager.  
88 Dalhousie Street.  
Bell Phone 9. Auto. Phone 19.

**HOAG'S GARAGE**  
Dalhousie and Clarence Sts.  
STORAGE, ACCESSORIES AND REPAIRS.  
Office Phone 1578. House Phone 1092  
Storage, Accessories and Repairs.

**C. H. Brown**  
Talking Machines, Records and Supplies  
205 Colborne Street.

**INSURANCE.**  
**GEORGE BALLACHEY,**  
Agent. Farms for Sale  
Office: With A. L. Baird, Room 16.  
Temple Building, 78 Dalhousie Street, Brantford, Phone 408.

**Burford, Norwich, Tilsonburg, St Thomas and intermediate stations.**  
5.20 p.m., Daily except Sunday for Burford, Norwich, Tilsonburg, St. Thomas and intermediate stations; arrives 8.50 a.m., and 5.20 p. m.

**T. J. NELSON, W. F. BRIGGS**  
C. P. & T. A. D. T. A.

**H. & B. RAILWAY.**  
(Effective, Nov. 1, 1912).  
DEPARTURES EAST.  
7.40 a.m.—Daily for Hamilton and intermediate stations, Toronto, Bala, Parry Sound and Muskoka Points, Welland, Niagara Falls and Buffalo.

**DEPARTURES WEST.**  
9.40 a.m.—Except Sunday for Scotland, Waterloo, St. Thomas, Detroit, Chicago and the West.

**GRAND VALLEY RAILWAY.**  
Cats leave for Paris at 7.05 a.m. and every hour thereafter till 10.05 p.m. On Sunday the first car leaves at 8.05 a.m. and then every hour. Cars leave for Galt at 7.05 a.m., 9.05 a.m., 11.05 a.m., 1.05 p.m., 3.05 p.m., 5.05 p.m., 7.05 p.m., and 9.05 p.m., Sunday included.

## HERE IS REAL DYSPEPSIA CURE

"Pape's Diapepsin" settles sour, upset stomachs in five minutes.

Do some foods you eat hit back—taste good, but work badly; ferment into stubborn lumps, and cause a sick, sour, gassy stomach? Now, Mr. or Mrs. Dyspeptic, get this down; Pape's Diapepsin digests everything, leaving nothing to sour and upset you. There never was anything so safely quick, so certainly effective. No difference how badly your stomach is disordered, but with relief in five minutes, but with pleasure you most is that it strengthens and regulates your stomach so you can eat your favorite foods without fear.

Most remedies give you relief sometimes—they are slow, but not sure. Diapepsin is quick, positive and puts your stomach in a healthy condition so the misery won't come back.

You feel different as soon as Diapepsin comes in contact with the stomach—distress just vanishes—your stomach gets sweet, no gases, no belching, no eructations of undigested food, your head clears and you feel fine.

Go now, make the best investment you ever made by getting a large 50-cent case of Pape's Diapepsin from any drug store. You realize in five minutes how needless it is to suffer from indigestion dyspepsia or any stomach disorder.

**LEGAL.**  
Andrew L. Baird, K.C.—Barrister, Solicitor, Notary Public, Etc. Office, Temple Building, 78 Dalhousie St. Office Phones 8, house phone Bell 463.

**Ernest R. Read—Barrister, Solicitor, Notary Public, Etc.** Money to loan on improved real estate at current rates and on easy terms. Office, 187 1/2 Colborne St., Phone 487.

**Arthur H. Sydere,** Clerk of the Legislative Assembly. Toronto, 10th January, 1913.

**NOTICE**  
Friday, the 14th day of February next, will be the last day for presenting Petitions for Private Bills.

**SYNOPSIS OF CANADIAN NORTHWEST LAND REGULATIONS.**  
ANY person who is the sole head of a family, or any male over 18 years old, may now obtain a quarter section of available Dominion land in Manitoba, Saskatchewan or Alberta.

The applicant must appear in person at the Dominion Land Agency or Sub-Agency for the District. Entry by proxy may be made at any agency on certain conditions, by father, mother, son, daughter, brother or sister of intending homesteader.

Duties—Six months' residence upon and cultivation of the land in each of three years. A homesteader may live within nine miles of his homestead on a farm of at least 80 acres, solely owned and occupied by him or by his father, mother, son, daughter brother or sister.

In certain districts a homesteader, in good standing may pre-empt a little village has sprung into being on the east side of the town of one or two stores, a laundry and a bakery. As an indication of the boom that attended the establishment of the place, it might be mentioned that the sale of town lots brought from \$80 to \$300 apiece.

At Robertson Lake, and again at the Okikosis River, on the boundary, several lots have been sold, but owing to the lack of roads there has been very little settlement. The former post makes the first division east of Cochrane and the town of O'Brien has been laid out. It will eventually become a place of some importance, owing to its location on the river, but none of the town lots has been sold as yet. There are other settlements here and there elsewhere east of Cochrane, but very little land has been opened.

## NEW EMPIRE IS OPENED

N.T.R. IN NEW ONTARIO UNLOCKS THE "CLAY BELT."

Already Busy Little Towns Are In Existence Along the Great Trans-Continental Highway Round About Cochrane and For 180 Miles East—The Scenery Is Not Much But the Land Is Real Wheat Soil.

With Government-operated trains on the completed sections of the National Transcontinental Railway east and west of Cochrane, a big slice of the hinterland of Ontario and Quebec will come within the ken of the people of the rest of Canada. The scene-shifters, or in this case the rail-road-builders, have long been busy preparing the stage, and now the curtain is about to rise on a new setting to the national drama.

From the scenic standpoint the new road can scarcely be said to add much to the sum-total of Canada's picturesque rail routes. The country traversed is almost uniformly level, save where the rivers have gouged out deep valleys in their course northward. It is in effect a great forested plain, intersected by numerous watercourses. Occasionally a rock-cut is encountered; sometimes a lake is sighted, but, generally speaking, the route is a straight line along a mile after mile through a wide avenue cut out of the forest.

The rivers provide the principal variety in the scene. They are fine bodies of water—some, like the Abitibi, flowing deep and slow; others like the Nagagami, being shallow and swift. From the Bell River on the east to the Kenora on the west, at least thirty streams of goodly size are crossed—all tributary either directly or indirectly to James Bay.

Splendid steel bridges span the majority of them, though beyond the Missanabie to the west permanent steel structures have not yet replaced the temporary wooden trestles. Viewed from the bridge, the river valleys furnish vistas of much attractiveness, which are a decided relief to the wall of forest that otherwise limits the view.

The Abitibi Lakes, lying in the district between forty-five and eighty-five miles east of Cochrane, and to the south of the railway, are the largest bodies of water encountered. There are two of them, known respectively as the Upper and Lower lakes. Both are comparatively shallow, with pretty tree-clad shores and numerous islands. Makami Lake and Robertson Lake, further east, are the only other lakes lying in that direction, while to the west there is practically none of water in the immediate neighborhood of the road.

With some slight variations, the character of the soil is uniform both east and west, with perhaps a slight superiority on the west side of Cochrane and beyond. Competent authorities pronounce it to be equal to the best soil in old Ontario, and experiments tried at the camp of the engineers all along the line demonstrate its capacity for growing all kinds of root crops with surprising results. At the same time it would be misleading to claim that grain can be grown successfully in this country under present conditions. The danger from early frosts is not to be ignored, and until well advanced in the cleared and drained the presence of so much shade and moisture will continue to be a menace. In growing hay and experiments tried at the camp of the engineers all along the line demonstrate its capacity for growing all kinds of root crops with surprising results.

Naturally settlement is sparse, but a beginning has been made. In the neighborhood of Robertson Lake, the Ontario Government has been actively engaged this year in road-building, and already some hundred thousand acres have been settled. At Harrisburg, on the east side of the interprovincial boundary, the Quebec Government has also been doing colonization work. About fifteen miles of road has been constructed along the river north and south, and three hundred farm lots have been sold to French-Canadian settlers.

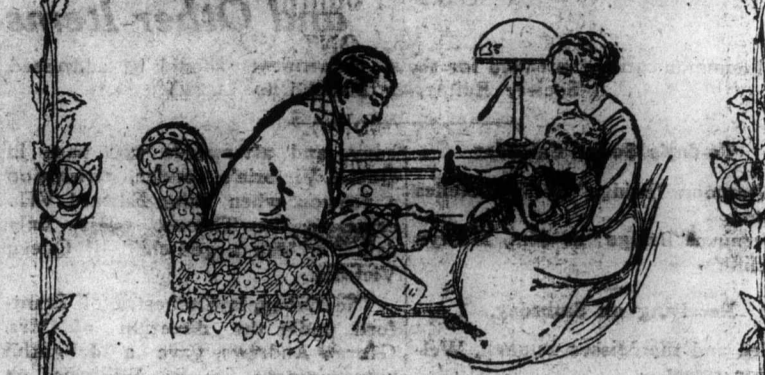
At Robertson Lake, and again at the Okikosis River, on the boundary, several lots have been sold, but owing to the lack of roads there has been very little settlement. The former post makes the first division east of Cochrane and the town of O'Brien has been laid out. It will eventually become a place of some importance, owing to its location on the river, but none of the town lots has been sold as yet. There are other settlements here and there elsewhere east of Cochrane, but very little land has been opened.

West of Cochrane almost the same situation exists, and one does not need to travel many miles before the last vestiges of civilization are passed. After an interval of one hundred miles or more the little outpost town of Hearst is reached. Hearst is the first divisional point west of Cochrane, and it might be said to be a population. All round lies an excellent farming district. Beyond Hearst there is no sign of human habitation save the construction camps and the various engineers' residences. Mr. H. C. Calkin is the Globe.

**Electric Restorer for Men**  
This is a new and revolutionary discovery. It is a powerful restorative and is used by thousands of men who are suffering from various ailments. It is a powerful restorative and is used by thousands of men who are suffering from various ailments.

## "LITTLE DARLING" "LITTLE DAISY"

HOSIERY FOR INFANTS AND CHILDREN



**What Does a Man Know**  
about children's hosiery? Little, perhaps; but even he will appreciate the superiority of "Little Darling" or "Little Daisy" Hosiery over any other kind baby ever wore.

Cost No More  
THE CLIPMAN HOLTON KNITTING CO. Limited  
Hamilton, Ont.



## ANNOUNCEMENT!

We are now in position to transfer messages to Princeton, Drumbo and surrounding territory. This new connection comprises about five hundred telephone subscribers.  
For information as to rates, etc., telephone "Automatic" 224.  
Canadian Machine Telephone Company, Ltd.  
H. E. ROSE, Manager

## GREAT JANUARY SALE

Colborne St. Both Phones 143 Near Market  
Special Bargains on offer this week—Remarkable values which no householder can afford to overlook

**Egg Specials**  
Splendid Boiling Eggs 30c doz.  
Finest Cooking Eggs 26c doz.

**Butter Specials**  
Choice Dairy Prints 29c lb.  
Finest Creamery Prints 34c lb.

**Canned Goods**  
June Peas and Sweet Corn  
250 doz. Choice June Peas 12c can  
250 doz. Sweet Corn 10c can  
TOMATOES—The finest procurable, 6 cans for 85c  
Pickled Pork—Side pieces 14c to 16c lb.  
Pickled Pork Hocks—Lean and meaty 7c lb.  
Oranges—Sweet Juicy and Seedless 16c doz.  
Tea  
Davies' Tea is beyond all question a wonderful tea. Just try it. Now selling at per lb. 25c

**Bacon—Davies' Wiltshire Cure**  
Bacon possesses an exceptionally mild and sweet flavor. Customers who have tried it speak most highly of it. Try it and prove it to your own satisfaction. We are selling this prime quality bacon at special prices.  
Wiltshire Cured Shoulders, weight about 6 lbs. each, mild cured, a big special 15c lb.  
Cakes—Davies European Cakes are made from the finest ingredients, fruit, seed, plain and cherry 15c to 20c lb.  
**Sausages—Davies' Sausages**  
Are always a bargain—Fresh supplies daily.  
Homemade 12c New England 15c Cambridge 16c Little Pig 18c

**Wm. Davies Co.**  
107-109 Colborne St. Brantford, Ont.

## 5% Interest

The Company receives sums of \$100,000 years—invests the same in first mortgage estate and absolutely guarantees them with interest at five per cent. per annum December 31st.

WRITE FOR FULL CAPITAL AND SURPLUS  
**The Trusts and Guarantee**  
TORONTO  
J. J. WARREN, President.  
Brantford Branch, 12  
T. H. MILLER.

## The Merchants Bank

Established 1864  
President—Sir H. Montagu  
Vice President—K. G. General Manager—J. W. Reserve Fund and Undivided Profits 186 Branches and Agencies, extending all over Canada. Interest allowed on Deposits on current rates. Cheques on any bank. Farmer's Bank. Given special attention. Discount notes, forms supplied. Open Saturday evening. Brantford Branch, cor. of Dalhousie and  
W. A. BU



## BERT HOWE

Telephone 1606  
Your Grandfather Road  
A slow moving vehicle adequate in its day, that has disappeared because it could not meet the modern problem of carrying many people over long distances.  
Your Grandfather Had a Big Heavy Watch  
—not much of a timekeeper and very expensive in upkeep. Perhaps for sentimental reasons you are wearing it today. You are wrong. Valued heirloom without any result hindered by its inaccuracy, you are other modern facilities. Put your grand in a safe place.  
Buy one of our handsome filled  
—they are light, durable, accurate and  
**SHEPPARD**  
JEWELLER & OPTICIAN

**BANK OF HAMILTON**  
Capital Paid Reserves and Total Assets  
It is not in the greatest of effects of ad fund gives you than the pa would obtain Small amounts deposited but surely, enough to insure reverses  
BRAN Main Office East End Bra

**HOT WATER**  
Just turn the faucet and STANTANEOUS W furnishes the hot water gas or time. For price Plumbing Trade, or  
**Brantford**

**Does not Col**

We would call your attention to our stock of celebrated  
**Dr. Jaeger Pure Wool Underwear, Sox, Wool Zephyr Shirts, Sweater Coats, Etc.**  
The prices are very moderate, and are fixed by the Company.

**Broadbent's "Arcade Store"**  
Agents in Brantford for JAEGER PURE WOOL CLOTHING

**JAGO & COY.**  
8 St. Paul