

# MURAL DECORATION.

Having engaged a practical and competent man, thoroughly acquainted with the execution of all styles of decoration of Churches in Europe and America, we are prepared to submit schemes of colour for any contemplated work, at prices within the reach of all parishes.

Preliminary coloured sketches will be forwarded on application to  
**COX SONS, BUCKLEY & CO.,**  
NO. 8 EAST FIFTEENTH STREET NEW YORK CITY, U. S. A.

**BISHOP BETHUNE COLLEGE**  
ELLESMERE HALL,  
OSHAWA.

Will open Monday, September 8th. For terms, etc., apply to the Lady Principal.

**TRINITY COLLEGE SCHOOL,**  
PORT HOPE.

**MICHAELMAS TERM**  
Will begin on Thursday, Sept. 11th.

Forms of Application for Admission, and Copies of the Calendar may be obtained from the

**REV. C. J. S. BETHUNE, M.A., D.C.L.,**  
HEAD MASTER.

**Preparatory School for Boys.**

**ESTABLISHED 1879.**  
Board and Tuition. The usual English Branches and Elementary Classics. French and Mathematics. Address,  
**SPARHAM SHELDRAKE,**  
"THE GROVE," LAKEFIELD, ONT.

**ILLINOIS TRAINING SCHOOL FOR NURSES.**

The Commencement exercises of the "Illinois Training School for Nurses," took place on the 24th ult., when a class of 29 graduated. The new class is now being formed for the fall term. Those desiring admission to the school should apply at once, as only a limited number can be accepted. Applications should be addressed to the Superintendent,

**MISS FIELD,**  
304 Honore St., Chicago.

**H. WILLIAMS & CO.,**  
SLATE AND FELT ROOFERS

4 Adelaide Street, Toronto,  
**DEALERS IN ROOFING MATERIALS.**  
Proprietor of Williams' flat slate Roof, (a superior roof for flat surfaces.)

**TRINIDAD ASPHALT LAID ON CELLAR BOTTOMS.**  
STABLE FLOORS, WALKS, &c.

**BELL WANTED.**

WANTED—For a Mission Church, a good tenor bell from 200 to 300 lbs., must be cheap. Address, Rev. H. Softley, 43 Woosley Street, Toronto.

**MENEELY BELL COMPANY.**  
The Finest Grade of Church Bells.

Greatest Experience. Largest Trade. Illustrated Catalogues mailed Free.

**Clinton H. Meneely, Bell Co., Troy, N.Y.**

**Thos. Mowbray,**  
ARCHITECTURAL SCULPTOR  
In Stone and Wood,



SUCH AS  
Altars, Fonts,  
Reredos, Pulpits,  
Together with general architectural work for public and private buildings.

**CHRISTIAN ART**  
A Specialty.

ADDRESS: **YONGE ST. ARDECA, TORONTO.**

**SARATOGA SPRINGS, N. Y.**  
**DR. STRONG'S SANITARIUM.**

Open all the year. For the treatment of Female, Nervous, Respiratory, Malarial and other chronic Diseases. Equipped with all the best Remedial Appliances—among them Massage Vacuum Treatment, Swedish Movements, Electricity, Turkish, Russian, Roman, Electrothermic, French Douche and all baths. A cheerful resort for treatment, rest or recreation. In a dry and tonic climate, with the special advantages of the Spring Water. Lawn Tennis, Croquet, etc. Send for circular.

**THE - BISHOP - STRACHAN - SCHOOL**  
FOR YOUNG LADIES.

President, The Lord Bishop of Toronto. Vice-President, The Lord Bishop of Niagara.

This School offers a liberal Education at a rate sufficient only to cover the necessary expenditure, the best teaching being secured in every department.

At the last Examinations at Trinity and Toronto Universities, several pupils of the School attained good standing in honors. During the vacation the school building has been completely refitted with heating and ventilating apparatus, and new bath rooms have been erected. The comfort of the boarders has been studied in every particular.

Early application is recommended, as there are only occasional vacancies for new pupils. Annual Fee for Boarders, inclusive of Tuition, \$90 to \$95. Music and Paintings the only extras. To the Clergy, two-thirds of these rates are charged. Five per cent. off is allowed for a full year's payment in advance.

The School re-opens on Wednesday, Sept. 3rd. Apply for admission and information to  
**MISS GRIER, Lady Principal,**  
WYKHAM HALL, TORONTO.

## EVERYBODY'S MUSIC.

Among the abundant treasures of our immense stock every one is sure to be suited. Please select in time your "autumnal music books."

Temperance people will like  
**TEMPERANCE CRUSADE**, (35cts. \$3.60 dz.) Emerson & Moore.  
**TEMPERANCE RALLYING SONGS**, (35cts. \$3.60 dz.) A. Hull.

Male Voice Clubs will like  
**EMERSON'S MALE VOICE GEMS**, (\$1. \$9 dz.)  
**EMERSON'S MALE VOICE CHOIR**, (50cts. \$5. dz.)

The Grand Army will like  
**WAR SONGS**, (50cts. \$4.50 dz.)  
Boys, old and young, will like  
**COLLEGE SONGS**, 82 songs, (50c.) Near 200,000 sold.

School Teachers cannot help liking the three books of  
**SONG MANUAL**, (30cts., 40cts., 50cts., \$3., \$4.20, \$4.80, dz.) Emerson.

Piano Teachers will like, very much, as the best companion to any Instruction Book.  
**MASON'S SYSTEM OF TECHNICAL EXERCISES**, (\$2.50.)

Gospel Singers will like  
**PRaise IN SONG**, (40cts. \$4.20 dz.) Emerson.  
Letters of inquiry cheerfully answered.  
Books mailed for retail price.

**OLIVER DITSON CO.,**  
BOSTON.

# The D & C TO MACKINAC

**SUMMER TOURS.**

**PALACE STEAMERS. Low Rates.**

Four Trips per Week Between  
**DETROIT, MACKINAC ISLAND**  
Pe' akoy, The Soo, Marquette, and Lake Huron Ports.

Every Evening Between  
**DETROIT AND CLEVELAND**  
Sunday Trips during June, July, August and September Only.

**OUR ILLUSTRATED PAMPHLETS,**  
Rates and Excursion Tickets will be furnished by your Ticket Agent, or address  
**E. B. WHITCOMB, G. P. A., DETROIT, MICH.,**  
**THE DETROIT & CLEVELAND STEAM NAV. CO.**

**MEMORIAL WINDOWS**  
of stained and mosaic glass. We take pleasure in arranging special designs for windows on receipt of information as to size, shape, desired subject, etc. Send for new illustrated catalogue.  
**J. & R. LAMB,**  
59 Carmine St., New York.

## JONES & WILLIS,

### Church Furniture Mfrs

ART WORKERS IN  
Metal, Wood, Stone and Textile Fabrics.

43 GREAT RUSSELL STREET,  
(Opposite the British Museum.)  
LONDON, W.C.

AND EDMUND STREET,  
BIRMINGHAM, ENGLAND.  
5 Bold St., LIVERPOOL.

**DOMINION STAINED GLASS CO.**  
77 RICHMOND ST. W., TORONTO.

**Memorial Windows,**  
And every Description of Church and Domestic Glass.  
Designs and estimates on application.  
WM. WAKEFIELD. J. HARRISON.  
Telephone 1470.

## - N. T. LYON -

### STAINED - GLASS.

141 to 143 Church Street,  
TORONTO, - - - CANADA.  
Telephone 1702.

FOR CALENDARS of Bishop's College, and Bishop's College School, Lennoxville, P.Q., apply to the REV. THOMAS ADAMS, D.C.L., Principal and Rector.

## THE Alliance Bond & Investment Company,

### OF ONTARIO,

(LIMITED).

Incorporated Feb. 27th, 1890.  
CAPITAL, - - - \$1,000,000.

GENERAL OFFICES:  
27 and 29 Wellington Street East, Toronto.

The Company undertakes agencies of every description and trusts; gives careful attention to the management of estates, collection of loans, interest, dividends, debts, and securities.

Will invest sinking funds and moneys generally, and Guarantee Such Investments. Will loan money at favorable rates.

The Investment Bonds of the Company in amounts from \$100 upwards, and for any term of years from five upwards, are absolutely non-forfeitable, and can be secured by investment of small instalments at convenient periods.

Clergymen and others will find in them the most remunerative form of investment. Correspondence solicited and promptly answered.

**The Alliance Bond and Investment Company**  
OF ONTARIO, (Limited).  
TORONTO, ONTARIO.

## The Corporation of the Toronto Church School (LIMITED.)

COUNCIL—The Lord Bishop of Toronto, the Provost of Trinity College, the Hon. Mr. Justice Osler, the Rev. Dr. Langtry, E. D. Armour, Q.C., Walter G. P. Cassels, Esq., Q.C., E. M. Chadwick, Esq., Geo. S. Holmsted, Esq., Alan MacDougall, Esq., and W. H. Lockhart Gordon, Esq.

The Toronto Church School will re-open on Monday, the 8th of September, at 10 o'clock.

Pupils prepared for all public examinations, including matriculation at the universities and the Royal Military College.

Individual attention given to each boy is a marked feature of this school.  
Prospectuses can be obtained from  
**W. H. LOCKHART GORDON,**  
Hon. Sec'y, 128 Scott street.

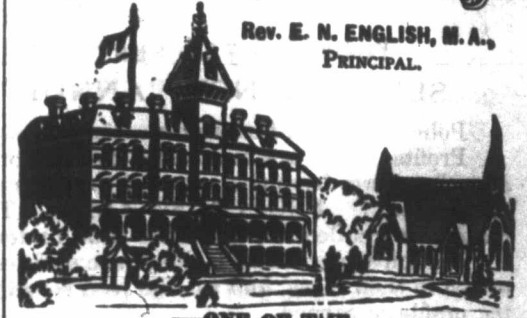
Incorporated 1886. TORONTO. Hon. G. W. ALLAN, President.

# CONSERVATORY OF MUSIC

IN AFFILIATION WITH TRINITY UNIVERSITY  
Fourth Year.

OVER 1200 PUPILS LAST THREE YEARS. FALL TERM BEGINS MONDAY, 1ST SEPTEMBER. SEND FOR 90 PAGE CALENDAR CONTAINING ANNOUNCEMENTS FOR COMING SEASON.  
**Edward Fisher, Musical Director,**  
Cor. Yonge Street & Wilton Ave., Toronto

## Helmuth College



Rev. E. N. ENGLISH, M.A.,  
PRINCIPAL.

ONE OF THE  
**Most Complete Institutions in America**  
FOR THE  
**EDUCATION OF YOUNG LADIES.**  
CIRCULARS ON APPLICATION.  
London, Ont., Canada.

Send for New Circular

ARCADIE,  
Yonge St.  
Toronto

28th Year. \* C. ODEA, Sec'y.

Will re-open September 1st.

## THE NORTH AMERICAN LIFE Assurance Co.

HON. ALEX. MACKENZIE, M.P.,  
PRESIDENT:

FULL DEPOSIT WITH THE DOMINION GOVERNMENT.

HEAD OFFICE  
22 to 28 KING ST. W., TORONTO.

THE SEMI-TONTINE RETURN PREMIUM PLAN

Provides that should death occur prior to the expiration of the Tontine period, the whole of the premiums that may have been paid will be payable with, and in addition to the face of the policy—thus securing a dividend of 100 per cent. on the premiums paid, should death occur during said period.

THE COMMERCIAL PLAN.  
The large number of business and professional men who have taken out large policies on the Company's Commercial Plan, show the demand for reliable life insurance relieved of much of the investment elements which constitutes the over payments of the ordinary plans, is not confined to men of small incomes, but exists among all classes of our people.

For further information apply to  
**WILLIAM McCABE,**  
MANAGING DIRECTOR,  
TORONTO.