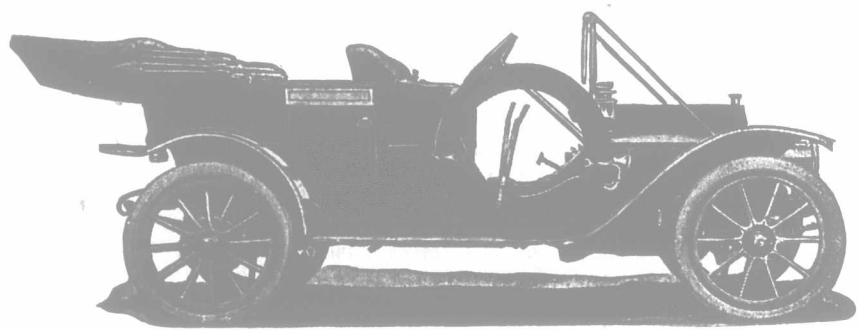


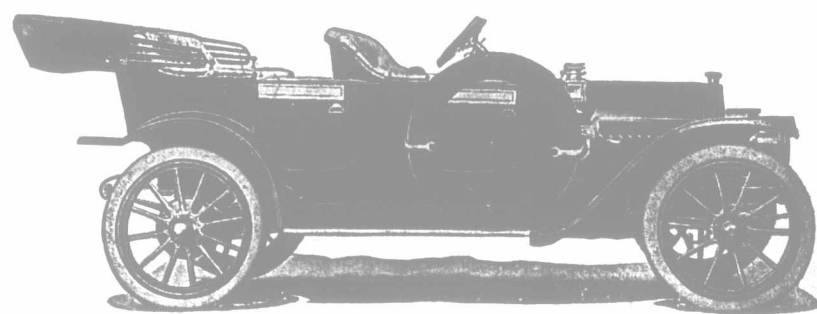
Buy the "EVERITT"—Canada's new and popular
 car—built true to the 1000th
 part of an inch throughout

Sold at
 U. S. Price
 because
 Canadian-Made

Guaranteed
 2 Years
 Extra Tire
 FREE



"EVERITT" STANDARD TOURING 1911 MODEL, \$1,450 (at Orillia)



"EVERITT" FORE-DOOR TOURING 1911 MODEL, \$50 EXTRA (at Orillia)

**Made to Carry a Big
 Live-Load**

A car with a strong, carefully proportioned chassis, made to save weight, has added capacity for carrying passenger weight. This is putting the right kind of weight on the tires, and saving tire wear from the wrong kind of weight. Your \$1,450 comes back in liberal carrying capacity. The "Everitt" is big value from the big live-load it carries for you.

**A Low-Hung, Easy-Riding,
 Roomy Body**

The "Everitt" double-drop frame car hugs the road. The car-body floor is lowered by the double-drop side-frames, but high road clearance is maintained. Riders have lessened side-shocks and jolting. Skidding is prevented. Tire strain is reduced. The "Everitt" is easy to get into and alight from. Yet there is liberal spring clearance, wide running boards, wide seat construction. The double-drop frame permits this.

**A Motor of Tremendous
 Strength**

Any motor of the "Everitt" size has to stand 16 blows of 3,200 lbs. each every second it runs, during years of service. This tremendous, racking, tearing explosion strain does not affect the "Everitt" Motor, because it is cast in one-piece for the parts taking strain. By casting all cylinders, etc., together, and stiffening them with the crank-shaft housing, the entire motor is in rigid alignment.

You get the benefit because your motor cannot get 'out of tune,' and need constant attention. It has a big, strong, solid, stiff main casting that holds every part where it must run rightly and smoothly.

This big main casting is in line with best motor construction. It is true to the 1000th part of an inch.

"Special Tudhope Equipment"

Most Liberal in the World with "Everitt's"

This jig-made car for the farm has extra big wheels, an extra simple and strong motor, is easy to run and care for. It is made by the Tudhope interests in Orillia. It is guaranteed two years. The car is simplified in every way and gives the best possible farm service. It gives prompt and quick transportation to market, to town for parts of implements during harvest, to a doctor or surgeon. It saves farm time immensely, brings post office and church and railway within a few minutes' distance. It is always ready, day and night. The "Everitt" is a perfect car for the farm and gives years of service. Get the catalogue to-day. It will make you money to have an "Everitt."

**Built by Tudhope of
 Orillia**

The name Tudhope is one long and favorably known to readers of this paper. The fact that the Tudhopes are behind the Canadian-made "Everitt" will be a guarantee of honesty, integrity and thoroughness in its manufacture. It means that practical and successful vehicle builders are putting their best brains and ample capital into the making of the "Everitt." You can trust it and them.

**Large-Size Wheels and
 Big Brakes**

Big wheels bridge road ruts small wheels drop into. The big-wheel "Everitt" rides easily, and wears tires less each mile than small wheels. This saves tire expense on the "Everitt"—longer mileage. The big "Everitt" wheels mean higher speed. Few, if any, cars at \$1,450 have the "Everitt" size wheels.

Big drum brakes, extra wide, on the "Everitt" make more sensitive brakes with greater leverage and less wear than small drums on small wheels.

**Replacements that Fit ---
 Placed by the Owner**

In case of accident, any "Everitt" part from the factory will exactly fit your car to 1-1000th inch. This means that you can fit the part in yourself, without filing. The exact and absolute standardization means lessened breakages anyway. In case of breakages, it means lessened work, time and trouble.

The "Everitt" is a safe buy for every possible accident.

**A Car the Owner Can
 Run and Care For**

The "Everitt" is simplified to the highest degree. The motor has 152 less parts than the next simplest motor on the market. The chassis has few parts. In actual practice it is small parts getting wrong that 'tie up' the car. These parts are eliminated in the "Everitt." The result is that it is hard to get the "Everitt" car out of running order.

The owner can easily understand and operate his "Everitt." He can easily get at the motor, and remove any single piston, valve, etc., without disarranging or disturbing any other part of the motor.

**Perfect Equipment --- Lots
 of It --- the Best**

Not merely best quality equipment goes with the "Everitt," but every "Everitt" has "Special Tudhope Equipment"; a complete extra tire cover, holders, shock absorbers, robe and foot rail, with the car. The gas lamps are of extra size, and Gray and Davis make. The Bosch magneto, high tension winding, gives a firing spark on a quarter turn of motor. This makes starting easy.

You don't get the above equipment with other cars at any price. Their full "Special Tudhope Equipment" is first introduced by the Tudhope people, and is the only such equipment in the motoring world.

**A Car with Low Upkeep
 Costs**

The long-stroke motor saves gasoline consumption, as the spark may be much more delicately adjusted and manipulated than in the short-stroke motor.

The tire-cost is low because the large wheels save tire wear. The light chassis saves tire wear. The low centre of gravity saves side shocks on tire. The large tires keep inflation better and heat less than small tires.

The tuning-up cost of the "Everitt" is much reduced through accurate 1-1000th inch standardization and fitting. This perfect construction maintains original factory perfection. The simplicity of motor and its strong main casting avoid 'falling away' from original condition. There is almost no attention needed for the "Everitt."

A Two Years' Guarantee

The manufacturer of any car will not extend his guarantee a day beyond the usual 60 days' time, unless the quality in his product, thoroughly known by the manufacturer, will permit and make a long guarantee possible. The "Everitt" guarantee is two years from date of purchase.

Send for the new illustrated Catalogue No. 7—just off the press.

Tudhope Motor Sales, Ltd.,
 168 King St. West, Toronto.

Tudhope-Everitt Sales Co.,
 Peerless Garage,
 344 Queen St., Ottawa.

TUDHOPE
 Motor Co., Limited
 ORILLIA

Tudhope, Anderson & Co., Ltd.,
 Western Showrooms,
 Winnipeg, Calgary, Regina, Saskatoon
 Carriage & Harness Supply Co.,
 Limited,
 208-210 McGill St., Montreal.