

1712B

THE CANADIAN JOURNAL OF COMMERCE.

Telegraphic Address:  
"SWINDEN, LONDON."

# C. F. E. Swinden & Co.,

MANUFACTURERS  
OF

Mining <sup>And</sup> Contractors  
Plant  
Specialities.



18 AND 20  
QUEEN VICTORIA STREET,

London, E.C., Eng.

## Henry Marshall,

ST. GEORGE'S STREET,

NORTHAMPTON, - ENGLAND.

-MANUFACTURER OF-

Gentlemen's and Ladies' Fine  
Grade FOOTWEAR.

EXCELLENCE OF PRODUCTION THE FIRST CONSIDERATION.

Tan and Black Glace Kids,  
Willow Calf.



Note. - These Goods are made in Eng-  
land, under the New Canadian Tariff.

## Fast Metal-Edging & Studding Machines

(PATENTED.)

(Endless Roll System.)

Still the **SIMPLEST, CHEAPEST**  
and **BEST BUILT** Machine  
for the Trade.

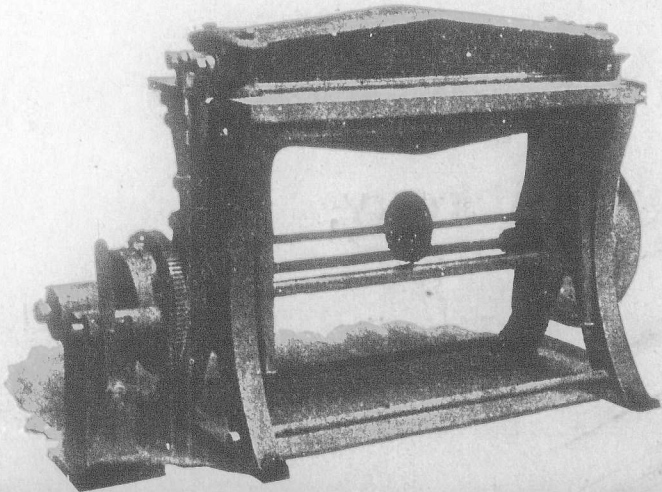
Every Machine Guaranteed.  
Popular Prices and Terms.

For particulars of this and our **NEW BENDING**  
**MACHINE**, which will bend every kind of Leather, Pulp  
and Strawboard write or see

The Box Making Machinery & Engineering Co.,

78 Turnmill St.,

CLERKENWELL RD., London, E.C., Eng.



These Box Machines, which are made in England  
for the Canadian Market, are sold **33 1/3 p.c. less**  
than from any other Country.