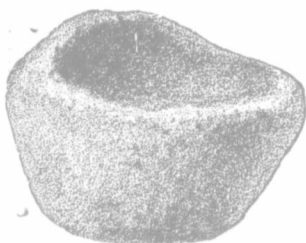


## STONE CUP.



101. (Full Size).

Figure 101 represents what is commonly known as a paint-cup. It is neatly hollowed, has a flat bottom, and is made from some kind of primitive rock. In the G. E. Laidlaw collection.

## AMULETS OR GORGETS.



FIG. 102. (Quarter Size).

This gorget or amulet of Huronian slate, from the Tweeddale collection is one of the finest in the museum. It is four and five-eighth inches long and handsomely veined. What may be called the lower side is not so well finished as the other. Unlike many objects of this class the hole shows signs of wear, the upper side of it being perceptibly the smoother. The flanges at the lower end are peculiar to this specimen. It was found in the township of South Yarmouth, county of Elgin.

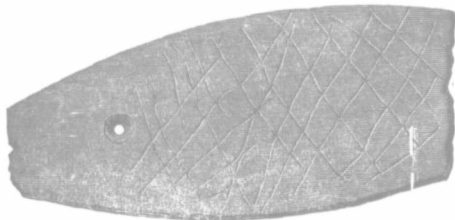


FIG. 103. (Quarter Size).

When perfect this gorget could not have been less than seven and a half, or eight inches long. It is of a dark colored argillite resembling a common school-