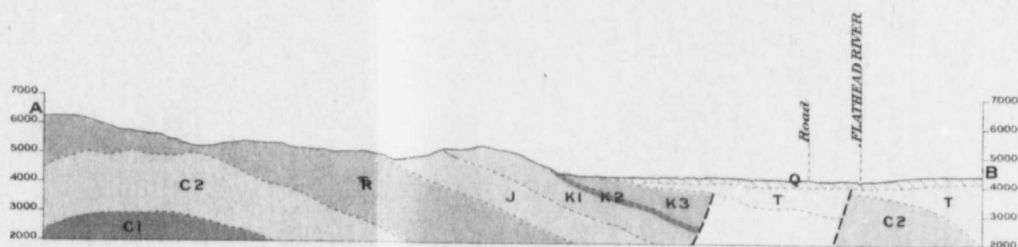


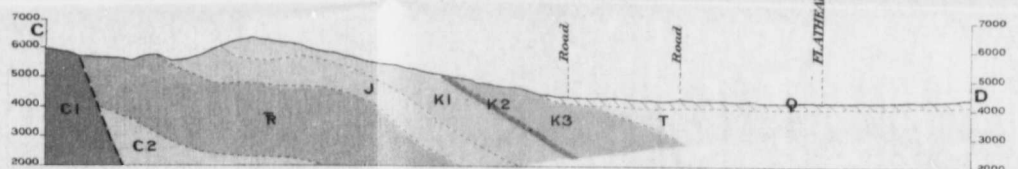
Canada
Department of Mines

HON. E. L. PATENAUDE, MINISTER; R. G. McCONNELL, DEPUTY MINISTER.

GEOLOGICAL SURVEY



Section along line AB
(Eastern portion, hypothetical)



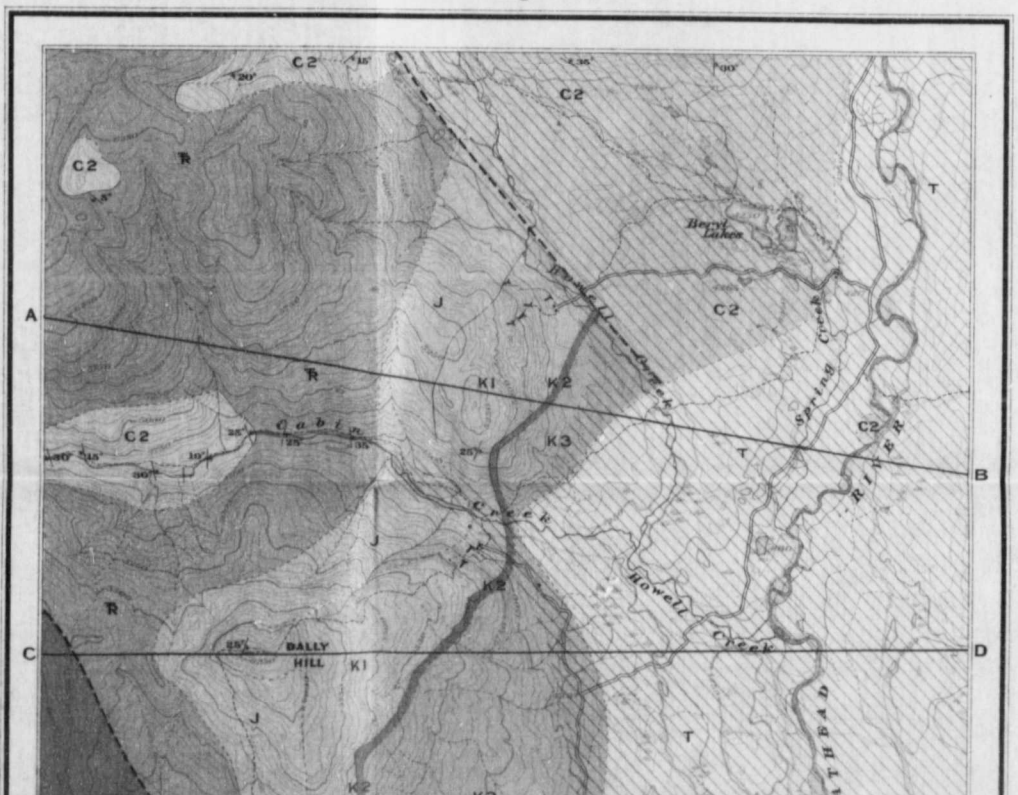
Section along line CD

LEGEND

TERTIARY QUATERNARY	RECENT	Q	Terraced floodplain gravel, almost entirely concealing the underlying bedrock
	EOCENE(?)	T	Kishinera formation partially consolidated gravel sand and clay, with lignite beds
	UPPER CRETACEOUS	K3	Soft sandstone and shale, probably bedrock concealed
MESOZOIC	LOWER CRETACEOUS	K2	Siliceous conglomerate
	JURASSIC	K1	Kootenay formation grey sandstone and shale with coal seams
PALÆOZOIC	PERMO-TRIASSIC(?)	J	Fernie formation grey and brown shales
	CARBONIFEROUS	R	White quartzose sandstone
	DEVONO-CARBONIFEROUS	C2	Grey and black limestone fossiliferous
	DEVONO-CARBONIFEROUS	C1	Black calcareous sandstone and shale, with limestone

LEGEND

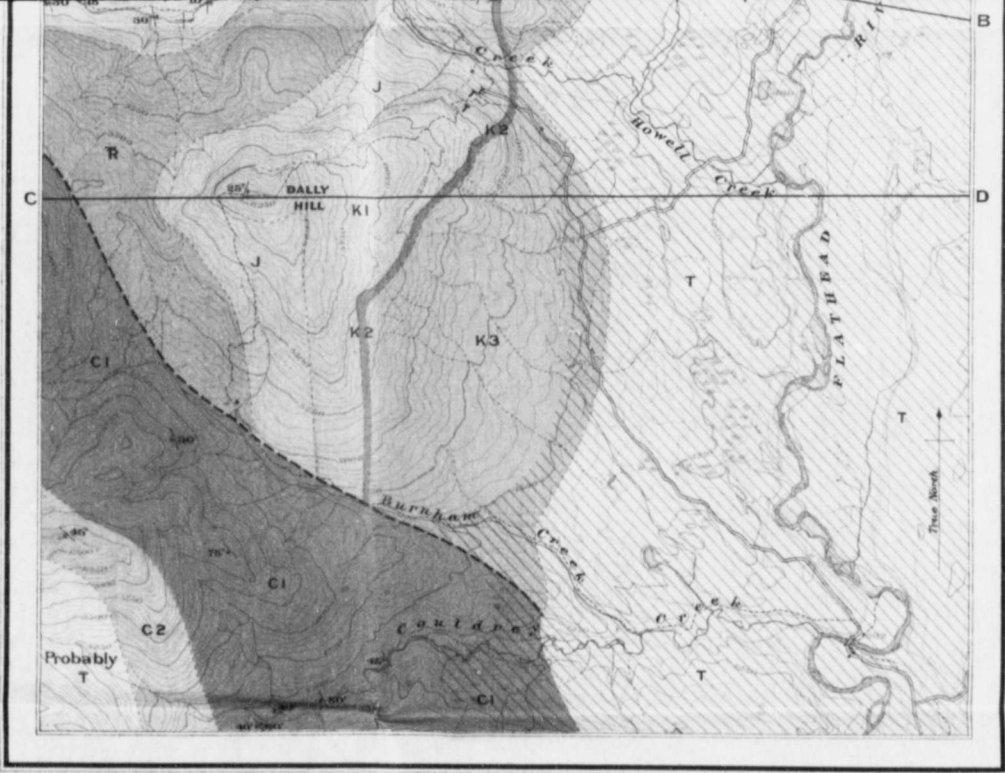
Culture	Roads and buildings
Trails	Bridges
Mine tunnels	Water
Rivers and streams	Lakes and ponds
Watercourses (with intermittent flow)	Marshes
Relief	



PALÆOZOIC	JURASSIC	J	Fernie formation grey and brown shales
	PERMO-TRIASSIC(?)	R	White quartzose sandstone
	CARBONIFEROUS	C2	Grey and black limestone fossiliferous
	DEVONO-CARBONIFEROUS	C1	Black calcareous sandstone and shale, with limestone

Symbols

Geological boundary (observed)
Geological boundary (approximate)
Geological boundary (inferred)
Fault (inferred)
Dip and strike
Horizontal strata



C.D. Senior, Geographer and Chief Draughtsman.
A.F. Clark, Draughtsman.

MAP 182 A
(Issued 1917)

Portion of
FLATHEAD COAL AREA
KOOTENAY DISTRICT
BRITISH COLUMBIA

Scale, 62,500



Note. For practical purposes assume
1 MILE TO 1 INCH

Approximate magnetic declination, 2° 15' East.

GEOLOGY

J.D. MACKENZIE, 1913

TOPOGRAPHY

F.S. FALCONER, 1913



Scale, 100 Miles to 1 Inch

To accompany Memoir by J.D. MacKenzie