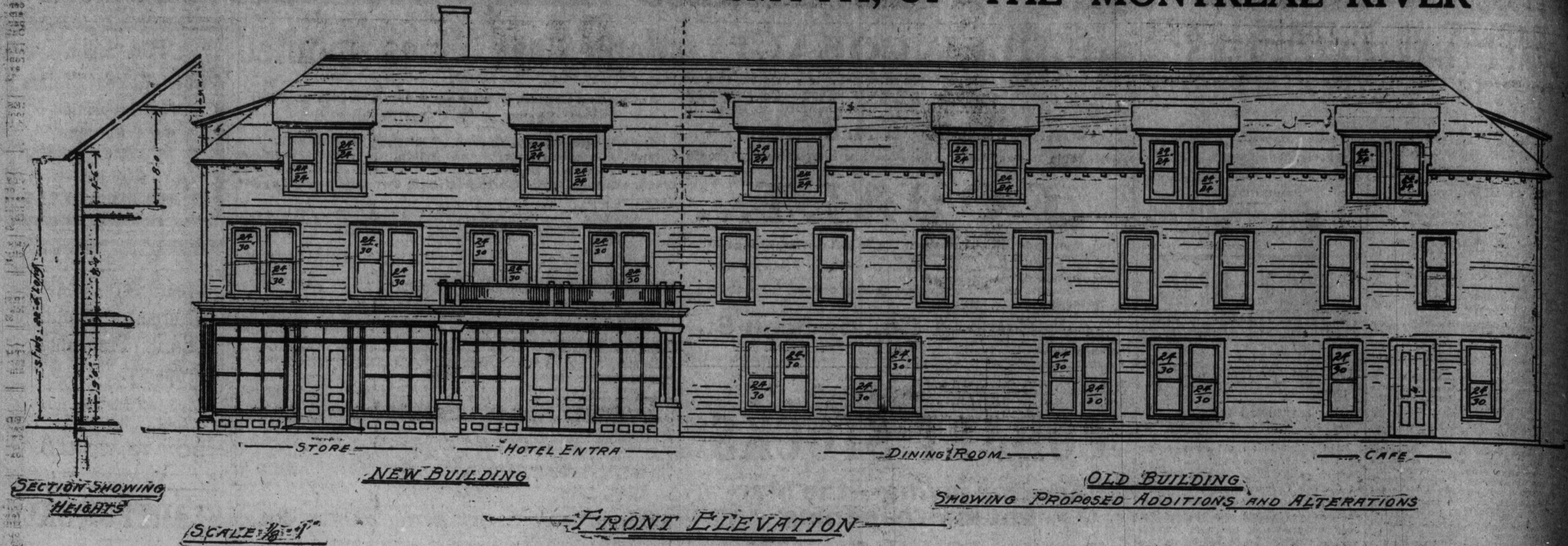


KING EDWARD HOTEL AT SMYTH, UP THE MONTREAL RIVER



INTEREST IS CONCENTRATED ON HARGRAVE'S DEVELOPMENT

The Cobalt camp and the Cobalt investment public here and across the border are closely watching developments on the Hargrave properties. The fact that mining operations are being carried on with great vigor on the celebrated "Jacobs" vein on the Hargrave side of the line is in itself important. The famous "Jacobs" vein, which is now producing on an average between \$2000 and \$3000 a day profits, was discovered in 1904, and was so called after the founder of the Kerr Lake Company. When it was known that it was so rich, both parties owning it—the Kerr Lake Company and the Hargrave Company—started to gouge out ore from an open cut. Both shipped rich ore from the open cut and nothing would show that the vein did not belong to one company, except the iron post at the imaginary dividing line. In fact, when both parties dug down some distance it was uncertain whether the Kerr Lake Company was taking from the Hargrave or vice versa. Then the Kerr Lake Company started to systematically make a mine, by sinking a vertical shaft some distance from the vein and running crosscuts to it and drifts along it. The accompanying illustration shows how largely the Kerr Lake property is developed. About the time the Kerr Lake Company went in seriously to make a mine, the Hargrave became involved in litigation, owing to disputes as

to title. After going from court to court the case finally came before the Privy Council in England and the contending parties had to come face to face with the final decision. As the value of the property was so great and the risk to one or other of the contending parties was so serious they all got together and came to a settlement, which allotted various interests in the property to the various parties. A clear title was then granted to the present Hargrave Company by the government, and active mining operations were immediately arranged for.

At one time it was thought that the "Jacobs" vein, after passing out of the Kerr Lake Company's property into and thru the Hargrave property, would pass into the Cobalt Merger, as it was heading in that direction. Later on, however, it was found that it took another bend to the southwest and passed again from the north Hargrave into the south Hargrave, as shown by the accompanying illustration. The property, as shown by the illustration, lying northwest of the two Hargrave properties is the Kerr Lake Company's property. It will be seen that the "Jacobs" vein cuts across the corner of the Kerr Lake property and runs into both the north and south Hargrave, so that the two Hargrave properties own a long stretch of it.

The Kerr Lake Mine has run its level right up to within a few feet of the Hargrave line, and in one instance, it is contended, across the Hargrave line. Recently the Kerr Lake Company struck bonanza ore running 10,000 ounces to the ton in its fourth level, and the stock rose from 475 to 800 in a few weeks. This occurred when the general market was declining, and was taken to mean merely a reflection of greatly increased investment value. The fact

PLAN OF WORKINGS - VEIN NO. 3 - OF THE KERR LAKE (JACOBS) PROPERTY Taken from their Last Annual Report showing underground Levels running to the Hargrave's Line.

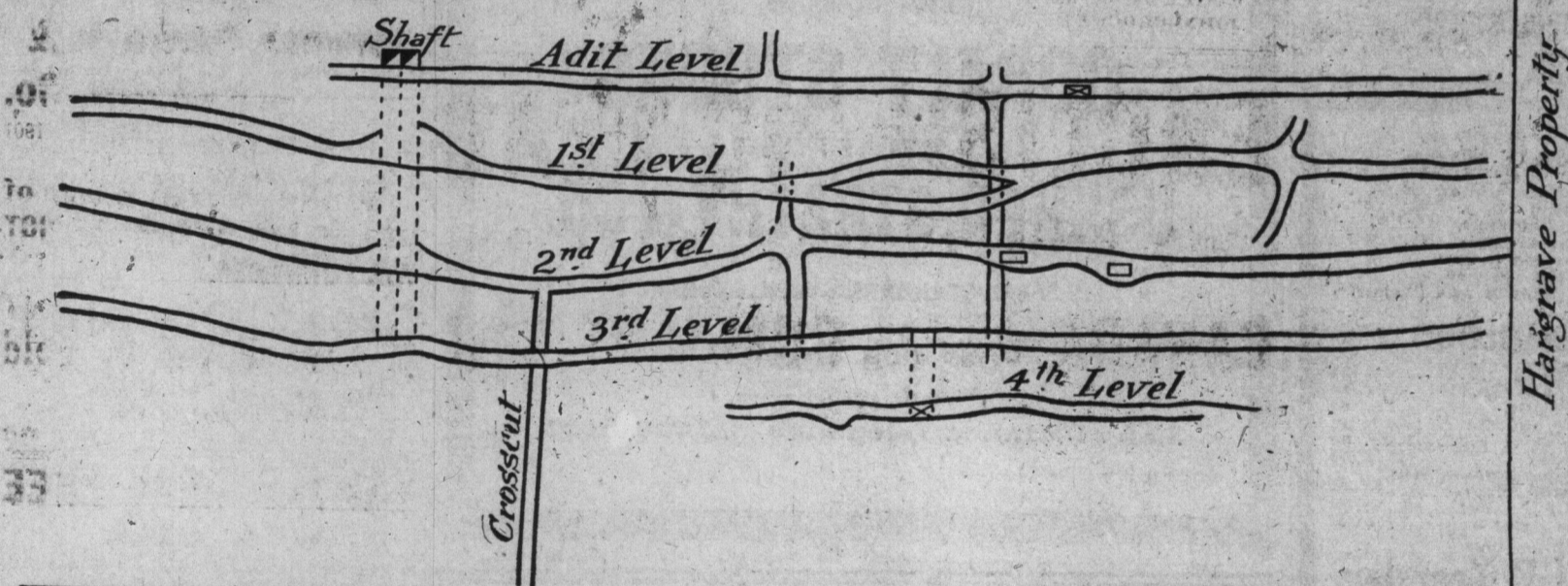
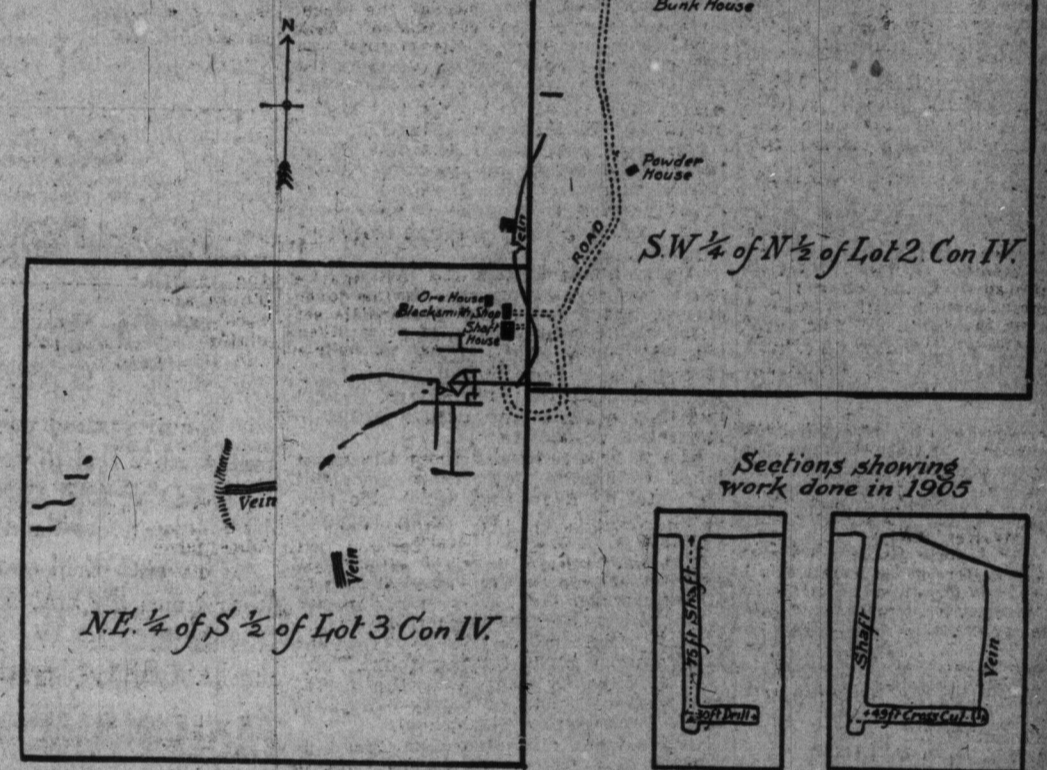


Exhibit No. 4 taken from GOVERNMENT APPEAL BOOK 1907.



Map showing how celebrated Jacobs vein crosses Kerr Lake and passes into the Hargrave's properties.

has been known all along that the Kerr Lake Company was getting rich shipping ore almost all the way down, but the striking of bonanza ore in the low levels proves the great value of the mine, and in a great measure goes to prove the value of the Hargrave.

The Hargrave Company is conducting its operations with the greatest possible vigor. The plant runs incessantly 24 hours a day and rapid progress is being made to where it is known almost to a certainty rich shipping ore will be reached. The shaft is now down 115 feet, and a crosscut will shortly be run to cut the famous "Jacobs" vein at depth. Manager Neelands says that the crosscut will be a short one, as the vein is dipping towards the shaft. When the crosscut is once started it will not take more than ten days to reach the vein. Sensational news is expected shortly after the crosscut is started.

GETTING IN MACHINERY
Compressor Went Into Otisec at Silver Lake.
SMYTH, Jan. 20.—(Special.)—A five-

drill compressor went into the Otisec property on Saturday, and it is understood that a 60 horse-power boiler and a six-drill compressor are on the way to the Otisec-Curry. There is a thirty horse-power boiler on this property at

present.
E. Platt of the Gavin-Hamilton mine informed The World that 25 men were at work on the property, and that shaft-sinking will be commenced some day this week. Camps are being created that will accommodate between 75 and 100 men. This property is about four miles from here.
At Gowanda there are said to be 15 men at the Boyd-Gordon and 10 at the Mann, all building camps. Camp building is about the only work left done on most of the properties at present.
Perry Hall.

C. F. H. No. 88.
Your train for Ferry Sound or Sudbury, leaving the Union Station at 8:40 every morning, except on Sunday. Fast time, comfortable coaches. A kitchen car is carried, serving excellent meals a la carte.

Going Up! Cobalts! Going Up!

Buy the "LISTED" Securities NOW

Silver Bar

This property is well located, has a splendid board of business men and is well managed. You can make good profits, according to our judgment, in buying this stock NOW. Then watch it climb UP, UP, UP. See the daily stock sales. Send us your orders.

New York Stocks

We carry stocks on moderate margins and receive information daily for the use of our clients. We also deal in Chicago grain, produce, etc. Send us your orders.

PHONE MAIN 6204

Cobalts on Margin

We handle nearly all the listed stocks on receiving a deposit. Why buy outright when you can take on so much more in this way.

WE ADVISE

the purchase of Temiskaming, Trethewey, Nova Scotia, Little Nip, Beaver.

BUY NOW

MAKE YOUR MONEY WORK WHILE YOU SLEEP

PATRIARCHE & COMPANY, BROKERS

STANDARD STOCK EXCHANGE BUILDING, TORONTO

OPTIC

Chicago S

Liverpool v
er than year
higher. M
than yesterd
outs closed
Winnipeg c
143 this day
Duluth car
against 67
neapolis 104
Chicago car
1. Corn, 35;
tract, 24
Broomhall
of wheat for
America, at
will take abo
7,000,000, and
Primaries:
00; shipment
68,000 451,000
445,000, 510,000
27,000.
Modern M
covering with
weather. In
of the crop is
ally, is repor
Broomhall
Argentina w
00, Corn, 7
supply whos
Corn, 15.00
wheat marke
active. Rec
large, and
satisfactory
few sellers,
ticularly for
Arrivals from
India—Furthe
the Punjab
proved. Aus
38,000, again
490,000 last ye

ST. LA

Receipts of
els of grain,
straw and s
Wheat—Th
follows: 100
200-bushels
Barley—Fov
55c.
Oats—Oat
Hay—Twenty
for timothy,
Straw—Two
ket at 2 p.m.
price for shee
Dressed, 10
\$2.25 per cent
Dressed, 10
prices easier
keys, 18 to 2
ms, 14 to 15
Butter—Re
increased me
prices to go
is none too
have not suff
d, 28.00, Farm
2c per lb.;
keepers are n
is selling at
that butter i
There is a to
ing offered.
Eggs—The
have been il
caused price
2c per doz
Dialers for
new-laid egg
George Pud
hogs a little
mild weather
breeding effe
Puddy quotes
greatly.
Wheat, red
Wheat, fall
Wheat, good
Rye, bush
Buckwheat,
Peas, bush
Barley, bus
Oats, bush
Seeds—
Aisick, fan
Aisick, No.
Aisick, No.
Red clover,
Timothy, 2
Hay and St
Hay, No. 2
Hay, No. 3
Straw, loco
Straw, loco
Fruits and
Apples, pe
Onions, pe
Potatoes, 5
Turnips, 5
Parasols, 5
Carrots, 5
Zucchini, 5
Poultry—
Turkeys, 6
Geese, 6
Spring chi
Spring du
Fowl, per

Dairy Prod
Butter, per
Butter, str
Eggs, str
per doz
Fresh Meat
Beef, fore
Beef, hind
Beef, chole
Beef, med
Beef, corn
Lamb, 10
Mutton, 11
Veals, con
Veals, pri
Dressed, 2
FARM P
Hay, car 10
Straw, car
Potatoes, c
Evaporated
Butter, 25c
Butter, stor
Butter, ore
Butter, cre
Eggs, new
Eggs, cold
Cheese, lat
Cheese, sw
Honey, ext
Turkeys, d
Grease, dra
Ducks, dra
Chickens, 4
Fowl, dres
Live poul
Prices q
Co., 35 E
No. 1 ins
No. 2 ins
No. 3 ins
No. 1 insp
No. 2 insp
No. 3 insp
bulls ...
Country h
Califskins,
Califskins,
Horseshide,
Horseshair,
Tallow, pe
Lambskins
Raw fut
Prices q
Winter
No. 2 red,
Spring
Guns
Barley,
No. 2
Oats, No.
No. 2 mil