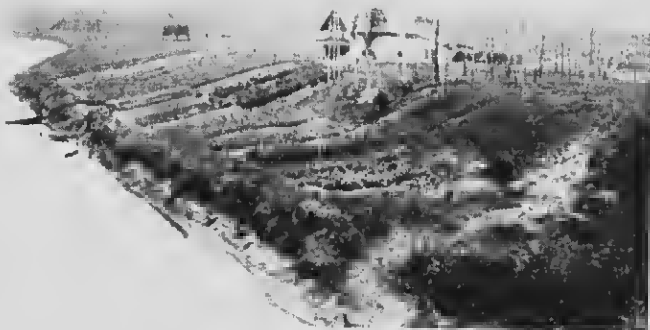


Mis. from  
Quebec

This area is in the heart of the clay belt country. Returned soldiers who are desirous of going upon the land under this plan will be first sent to the agricultural training depot establishment at Monteith, some 35 miles south of Cochrane, where they will be given instruction in agriculture and particularly in the methods for which the north country is best adapted. As they become proficient they will be transferred to Kapuskasing, where, under the supervision of a competent superintendent, their labours will be directed to clearing an area of ten acres in front of each 100-acre lot. Suitable dwelling quarters will be arranged, and as the colony progresses school accommodation and a hall to serve as a public meeting place will be provided. Roads will be constructed to best serve the needs of the settlement. Other provisions by the Government include a central colony farm in each community with suitable barns, and a stock of horses, cattle, sheep and swine will be kept at all times. In each central establishment will be kept a number of horses and a complete outfit of the heavier farm implements, which will be available to the settlers upon very easy terms. It is expected the adoption of the community system will greatly assist in developing the social side of farm life.

There is quite a good settlement at Mattice and fine fishing can be obtained on the Missinabi River, also the best of hunting. From here is an old established route to Hudson's Bay by canoe and the Hudson's Bay Co. have a trading store here.

Hearst (population 500) is a railway division point, with an English church and public school. Farming is the chief industry, hundreds of acres having been cleared and now under cultivation.



Experimental Farm, Fauquier