

SIMPSON'S FEBRUARY SALES---SECOND DAY

Second Day of the February House-furnishing Sales

Because of the Quantities Bought, Because of the Care in Buying, Because of the Close Pricing and the Sacrificing we are Doing These House Furnishing Sales are the Most Wonderfully Interesting Events of the Winter.

Watch for What You Need at Home or Ask us About it.

Electric Lighting Fixtures

Semi-Indirect Lighting Fixtures, 18 in. across, made up with leaded panels of alabaster glass, with insets of amber and green; all amber art glass, suspended by chain hanger, finished brass or Flemish old brass. Regularly \$25.00. Tuesday, 17.49

Dining-room Showers, with 16-in. plate, built in four lights, with chains to canopy at ceiling; complete with socket covers and shades, finished brass or brass. Regularly \$20.00. Tuesday, 13.50

Roman Gold Parlor Fixtures, 12-inch plate suspended by three chain hanger in "Sheffield" design with three lights below, decorated with crystal prisms, finished in Roman gold. Regularly \$15.50. Tuesday, 9.50

Hall Pendant, for one light, complete with chain hanger and square lantern, fitted with amber or green art glass, finished brass. Regularly \$2.75. Tuesday, 1.90

Electric Fixture Dept., Fifth Floor.

New 'tween Seasons Hats

One of the strongest features among these advance styles is Faillie Corded Silk, in all black or with touches of color. The trimmings are small wings and tulle, with stick bands or edgings. Most striking effects are shown, and withal modestly priced at from \$5.00 to \$6.50.

February Sale of Wall Papers

BEDROOM AND SITTING-ROOM PAPERS.

Imported Bedroom Papers, in light and medium grounds, with new patterns in greys, blues, greens, pinks, yellows. Regularly 25c roll. Tuesday, 16c

English Bedroom Papers, in light grounds, with floral and plain stripes, chintz and cretonne designs in pretty assortment of colorings. Regularly 35c roll, Tuesday 22c; regularly 50c roll, Tuesday 34c; regularly 75c roll, Tuesday 52c.

Domestic Bedroom Papers, neat colorings and designs, floral and stripes. Regularly 15c roll, Tuesday 9c; regularly 10c roll, Tuesday 6c.

Sitting-room Papers, in plain grounds, or small designs, in light tans, light browns, light greens and their blendings, with over-patterns in neat colorings. Regularly 35c roll, Tuesday 21c; regularly 50c roll, Tuesday 32c.

Cut-outs for bedrooms and sitting-rooms, in pretty color effects, from 2 in. 4 in., 9 in., and 18 in. wide. Regularly 8c roll, Tuesday 4c; regularly 10c roll, Tuesday 6c; regularly 15c roll, Tuesday 8c.

New Bedroom and Sitting-room Papers coming in stock daily. Call and see these goods. Prices ranging from 6c, 8c, 10c, 15c, 25c, 35c, 50c to \$1.00 roll.

New Cut-outs to suit any color style of room. Per yard, 5c, 8c, 10c, 15c, 25c, 50c.

Spectacles and Eyeglasses

TUESDAY, \$2.50.

Finest 1-10 12k. gold filled, any style in stock, with flat lenses. 2.50

Slight extra charge on these in complicated cases.

Sample Dresses at Half Price and Less at \$6.35

A line of samples in well assorted sizes; velvets, silks, cords and brocades; the styles are varied with many novel touches; shades are brown, black, open, wine, navy and tan. Regularly \$12.50, \$14.50 to \$14.00. Tuesday, 6.35

SUITSABLE DRESSES FOR STREET, AFTERNOON AND EVENING WEAR.

Latest models in tulle, silk crepes de chine, plaid silks, charming satins, messallines and chiffon, together with dainty nets and laces. Frilled and tunics are cleverly featured in these dresses, and wide crush belts, cleverly draped skirts in the newer styles; a wide variety of styles and colors. Most moderate prices, \$12.75, \$14.50, \$17.50 to \$25.00.

EVENING WRAPS IN PLUSH, MOTALASSE AND BROAD CLOTH.

Regularly \$25.00 to \$35.00, Tuesday \$16.85.

For afternoons and evening wear, in tango, rose, blue, green and black; all the very latest fashionable models, in three-quarter or full lengths. Tuesday, 16.85

CHIC SEPARATE SKIRTS

for spring include the pet-tot, two or three-tier effects, minaret effects, overdresses, coat effects, plaids, with monkey jacket to correspond, and numerous tailored styles. The materials are Bedford cords, poplins, ratine, diagonal serge, honeycomb, black and white broken checks, crepe, sponge, broadened eponge, plaids, silk moire, silk poplin, jacquard and other new fabrics. Prices ranging from \$5.50 to \$15.00.

EARLY SHOWING OF COTTON FROCKS.

Just received are these dresses of volles, cotton crepes, cordelines, linen gowns, for early spring wear. Inspection invited. Prices \$3.50, \$4.50, \$6.50 to \$17.50.

(Third Floor.)

Special Items of Second Day's February Carpet Sale

Every day during the month of February will be featured some special value of extraordinary interest. These will be well worth waiting for, as some of the items will be clearing lines of small stocks, odd mats, etc., that will be quickly sold out, and cannot be repeated. In accordance with the programme of the Sale, there will be every day one extra price item, corresponding numerically to that of the sale. So for the second day there will be an offer at \$2.00, as follows:

27 only, Beautiful, Closely Hand-braided Felt Rugs, in dark rich colors, for dens, halls, living-rooms, etc. Regularly \$2.75 and \$3.50 each. Size 36 x 72 inches, 30 x 90 inches: Second Day \$2.00 Special, each 2.00

THIS IS COCOA MAT DAY.

Exceptional values are these:

14 inches x 24 inches, 29c, 44c and 55c.
16 inches x 27 inches, 37c, 57c and 69c.
18 inches x 30 inches, 73c and 85c.
20 inches x 33 inches, 89c and \$1.04.

WOOL RUGS OF THE BEST KINDS

at less than they cost to make. All the most needed sizes in styles for bedroom furnishings: rose colors, blues, tans and greens, plain centers, small, dainty, clever designs and Oriental effects. Closely Woven Wool Rugs, in pretty colors:

7.6 x 9.0. Special 6.97
9.0 x 9.0. Special 7.97
9.0 x 10.6. Special 8.97
10.6 x 12.0. Special 10.57
10.6 x 13.8. Special 11.97

INEXPENSIVE UNION RUGS, IN ROSE, LAVENDER AND GREENS.

7.6 x 9.0. Special 4.50 9.0 x 9.0. Special 5.35

9.0 x 12.0. Special 7.15 9.0 x 10.6. Special 6.25

Stair and Hall Napier Matting at less than half-price, for stairs and over-carpet, to save the wear; reds, greens and tans; widths 18 in., 22½ in. and 27 in. Regularly from 23c to 35c. Tuesday special, yard 16

SEE THESE FLOORCLOTHS AT 23c YARD.

A great market's surplus stocks; some of these goods have some slight imperfections in the printing; they are all the best designs in tiles, oak boards, matting and carpet effects. Splendid values, square yard 23

BRUSSELS RUGS OF DEPENDABLE QUALITIES.

A great many different styles, for living-rooms, bedrooms, dining-rooms, etc.; all the best sizes:

6.9 x 9.0. Special February Sale 7.50
9.0 x 10.6. Special February Sale 8.50
9.0 x 9.0. Special February Sale 9.50
9.0 x 10.6. Special February Sale 11.50
9.0 x 12.0. Special February Sale 13.50

(Fourth Floor.)

Second Day's Sale in the Draperies

English Tulle, Chintz, Bungalow Nets and Cretonnes of all descriptions, at prices never before offered. Watch for the special tickets. Each one tells its own special tale of interest to every housewife.

\$2.00 VALUE FOR 86c YARD.

English Figured Tulle, an exquisite collection, both in colorings and designs; 50 inches wide; fast laundering colors. Sale price, yard 86c to \$1.25 yard. 1.48

Hand-blocked Linens, printed cretonnes and tulle; 50 in. wide; unfadeable; a beautiful range to select from. Sale price, yard 1.48

75c VALUE FOR 39c YARD.

English chintzes, fine reproductions of rare old prints, for slip covers, curtains, cushions, light upholstery, effective and durable, in shades to match any room in the home; 32 inches wide. Sale price, yard 39

BUNGALOW NETS.

A beautiful selection. Usual prices 60c, 65c and 75c yard. Sale price 39c. Pilot Net is the finest of all curtain net, richest and most durable; then a selection here that cannot be beaten. The usual prices range from 85c to \$1.25 yard. Sale price, yard 57

CURTAIN NETS.

Heavy open mesh, barred, and light, lace effects; a wonderful selection at the price; 42 in. to 50 in. wide. Sale price, yard 23

ENGLISH CRETONNES.

At 12½c per yard, at 15c per yard, at 19c per yard. At these three prices are displayed a range of English cretonnes to select from, that are well worth seeing.

Don't forget our Special \$1.98 Bedroom Box. Only a few left. Regular value \$3.50. Covered in chintz; nicely upholstered on top; lined and fitted with casters. There is a place in every bedroom for one of these. Sale price, each 1.98

\$1.00 CRAFTSMAN'S CLOTH, 79c YARD.

In olive, crimson, light red and brown; all-wool; 60 inches wide, for portieres and window hangings. Sale price, per yard 79

Tapestry Bandings to match, 10c, 15c and 20c yard.

LACE CURTAINS, 69c PER PAIR.

Nottingham Lace Curtains, 3¼ yards long; 48 to 60 in. wide; rich lace designs; well finished edges; a fine quality net. Regularly 85c and \$1.00. Sale price, pair 69

(Fourth Floor.)

The popularity of these beautiful silks and satins is evinced in the immense variety now being received.

The most fascinating of designs, shown in the rich, fresh colorings, only possible in a spring season, will appeal to all.

Crepe Ripple Brocade, Satin Liberty Brocade, Charmeuse, Brocade, Brocade Duchesse Satin, Brocade Crepe de Chine, combined Brocade effects in Silk and Velvet, Chiffon and Cut Velvet, Velvet and Satin, etc., etc., all of which can be perfectly matched with plain weaves.

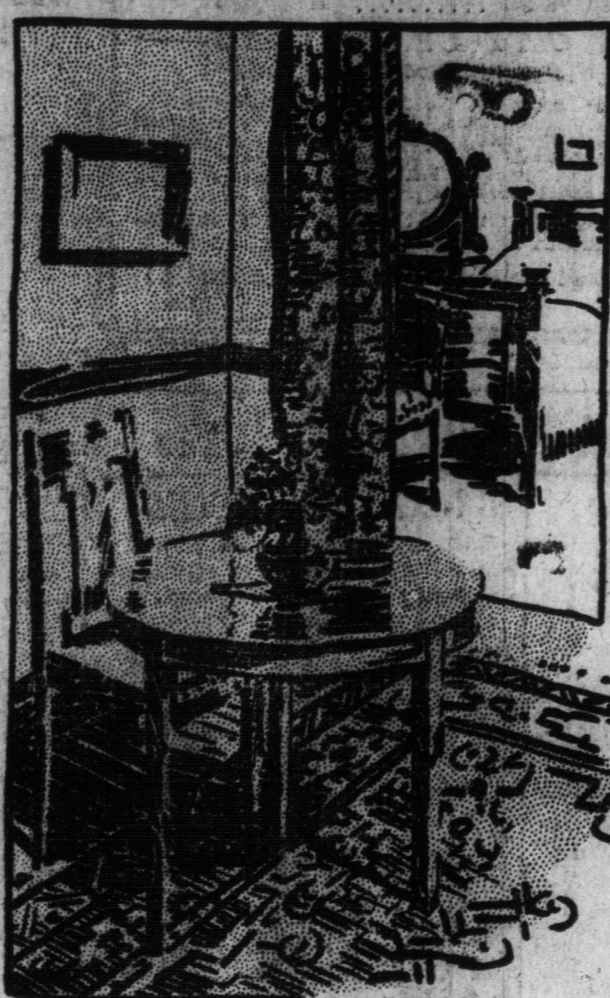
New colorings in "Silk-Satin", and beautiful "Charmeuse-Duchesse" satins. Browns in profusion, from the dark chocolate shades to light golden effects. The new nut brown, alean brown and coffee shades are very pretty. The tango shade is supplemented with new mahogany, a darker effect, bordering on the tango. The most delicate shades, from the bright Empire shades. A new rich green is Forestier.

Pinks are widely shown. Bengale, a very deep pink, with the new anchor blue and pale coral pinks, will be strong sellers.

These and many others now in stock.

(Second Floor.)

The Robert Simpson Company, Limited



February Furniture Sale

ALL BRASS BED, SPRING AND MATTRESS. REGULARLY \$21.00. FEBRUARY SALE \$14.15

PRICE, COMPLETE. "Brass Bedstead," in satin, bright or poliole finishes, in all standard sizes. Has heavy 2-inch pillars.

Spring, frame is made of steel tubing, has closely woven steel wire, strongly supported.

Mattress, filled with pure felt, has stitched roll edges, neatly tufted and covered in good quality art ticking.

Regularly \$21.50. February Sale Price, complete 14.15

ALL BRASS BED, SPRING AND MATTRESS. REGULARLY \$24.00. FEBRUARY SALE \$24.40

PRICE, COMPLETE. "Brass Bedstead," in satin, bright or poliole finishes, in 4 ft. and 4 ft 6 in. size only. Has heavy 2-inch continuous pillars.

Spring, frame is made of heavy steel tubing, has double closely woven steel wire, strong supports and reinforced.

Mattress, filled with pure elastic cotton felt, built in layers, tufted and enclosed in art ticking.

Regularly \$24.00. February Sale Price, complete 24.40

ALL BRASS BED, SPRING AND MATTRESS. REGULARLY \$40.00. FEBRUARY SALE \$30.00

PRICE, COMPLETE. "Brass Bedstead," in bright finish, in 4 ft. and 4 ft 6 in. size only. Has heavy 2-inch posts and top rails with large oval head and foot rails.

Mattress, filled with pure cotton felt, built in layers, neatly tufted and covered in high grade quality of art ticking.

Spring, frame of strong steel tubing. Has extra fine woven steel wire.

Regularly \$40.00. February Sale Price, complete 30.00

WHITE ENAMEL IRON BED, SPRING AND MATTRESS. REGULARLY \$50.00. SPECIAL \$5.90

WHITE ENAMEL IRON BED, heavy posts and fillers. Spring, has hardwood frame, closely woven steel wire, reinforced.

Mattress, centre filled with seagrass, with heavy layer of felt at top and bottom.

Regularly \$50.00. February Sale Price, complete 5.90

Chiffonier, in solid quarter-cut oak, golden or genuine mahogany veneered, bright or dull finish. Has two deep drawers and two short drawers. Large British bevel mirror. Regularly \$21.00. February Sale Price 15.85

Dresser, in solid quarter-cut oak, golden or genuine mahogany veneered, bright or dull finish. Has two deep drawers and two short drawers. Large British bevel mirror. Regularly \$21.00. February Sale Price 15.85

Dining Room Chair, made of selected quarter-cut oak, in either turned or golden finish. Has well upholstered seat and back, with leather or cloth covering. Regularly \$24.75. February Sale Price 17.90

Kitchen Cabinet, made of solid oak, in light finish. Has three doors fitted with glass and with flower bin with silver attached, sanitary glass sugar bin on swinging bracket, assorted spice line large double door cupboard, cutting board and two linen drawers. Regularly \$17.75. February Sale Price 14.85

Kitchen Cabinet, made of solid oak, in light finish. Has double glass doors, tiling flower bin, two tiling sugar bin, small drawers and five split cutting board, roomy cupboard with shelf. Have enamel rack on door and linen drawers. Regularly \$18.00. February Sale Price 14.85

Kitchen Cabinet, in solid oak, light finish. Has three glass doors, tiling flower bin, two tiling sugar bin, small drawers and five split cutting board, roomy cupboard and high grade hardware throughout. Regularly \$25.00. February Sale Price 23.00

Dining Chair, in golden finish. Have high backs, saddle and turned legs, well braced and supported. Regularly \$11.10. February Sale Price 8.30

Chiffonier, one only, in white enamel finish, slightly damaged. Has four long and two short drawers. British bevel mirror. Regularly \$25.50. February Sale Price 18.75

Chiffonier, one only, in white enamel finish, slightly damaged. Has two short and four long drawers. British bevel mirror. Regularly \$30.75. February Sale Price 22.90

Chiffonier, one only, in cream finish, slightly damaged. Has four drawers and two short drawers. Plate glass top and mirror. Regularly \$45.00. February Sale Price 34.75

Bed's Eye Maple Bedroom Suite, one only, of five pieces, consisting of Dressing, Chiffonier, Dressing Table and Twin Beds, beautifully finished and painted. Regularly \$120.00. February Sale Price 90.00

Dresser, one only, in white enamel finish, decorated with gold lines. Has large plate glass top. Regularly \$12.00. February Sale Price 9.00

Bed, one only, to match above dresser. Regularly \$110.00. February Sale Price 75.00

(Fifth Floor.)

THE NEWS OF A PAYING STRIKE

never roused in a mining camp keener interest than did the propositions of Columbus before the Council at Salamanca, the scene shown us in Dumond's painting, now on exhibition in the Store. To the Spaniard of the period, new lands spell new gold, gems, empire and admiralty.

But it is not mere cupidity that sharpens the faces of some of the churchmen in the picture. These men had devoted their whole lives to the church, and in the eyes of the greatest among them is the vision of new worlds to evangelize. No wonder that zeal and ambition blaze in the dark, powerful face of one who stands behind the central figure in the chair!

COLUMBUS AT SALAMANCA

(On View on Our Fourth Floor.)

Men's Worsteds Pants 1.49

REGULARLY \$2.25 AND \$2.50.

Made from reliable English worsted trousers, in grey, in neat stripe patterns. They are well tailored and stylish in design. Will give satisfactory service.

Sizes 32 to 44. Monday 1.49

A finer quality worsted trouser. In a good assortment of patterns and colors. Were bought at a price below their regular value, and we give at this price stylish, neatly tailored trousers that will afford the best satisfaction.

Sizes 32 to 44. Special 2.49

Good quality Worsteds Trousers for your best wear, of English worsted, in neat striped designs. Sizes 32 to 44. PRICE SINGLE-BREADED SUITS FOR YOUNG MEN.

Regularly \$12.50, \$13.00 and \$13.50, for \$9.45.

Single-breasted sack suits, with single-breasted vest and long cuff, or plain bottom trousers. Broken lines taken from our regular stock of higher grade suits. The patterns are neat, small checks and stripes. Some solid shades, greys, browns and tan-brown. Beautifully tailored and lined with best serge linings. Sizes 32 to 35. Tuesday 9.45

(Main Floor.)

Seven Special Items from the Boot Department

STRONG BOX KIP BOOTS. For Men, Boys and Youths.

Made on neat, easy-fitting laced blucher lasts, double standard screwed soles, strong solid leather boots that will stand lots of hard wear.

Men's, sizes 6 to 11. Tuesday 2.49

Boys', sizes 11 to 13. Tuesday 1.99

Youths', sizes 11 to 13. Tuesday 1.69

CHILDREN'S RUBBERS. High storm front and regulation styles, corrugated soles and heels, perfect in every way; sizes 3 to 10½. Tuesday, 38c; sizes 11 to 13, Tuesday, 47c.

WOMEN'S RUBBERS. Light weight, bright finished, high, medium and low heels; sizes 2½ to 7. Tuesday 65

Storm style, with extra high fronts; sizes 2½ to 7. Tuesday 75

MEN'S GUM RUBBER BOOTS, \$1.99. Best quality, snag-proof, with rolled edge soles and solid rubber heels, three eyelet style; sizes 6 to 13. Regularly \$2.85. Tuesday 1.99

MEN'S RUBBERS. Medium weight, reinforced corrugated soles and heels, high storm fronts; sizes 7 to 13. Tuesday 75

Plain rubbers, same quality; sizes 6 to 12. Tuesday 69

COMFORTABLE HOUSE SLIPPERS FOR MEN, 74c. Everett style, made from camel-hair cloth, in a neat plaid pattern, flexible leather soles; sizes 6 to 11. Tuesday 74

WOMEN'S RIBBON TRIMMED SLIPPERS, 50c. Dainty imported ribbon trimmed slippers, made from finest quality, all wool black felt, soft padded insoles, flexible leather soles; sizes 3 to 7. Regularly 55c. Tuesday 50

(Second Floor.)

In the Hosiery Sale

Women's Fine Silk Thread Hose, seconds of a well-known brand; deep, fine ribbed lisle top; black, tan, white, grey and navy; extra reinforced heel and toe. Regularly \$1.00. Hosiery Sale price 39c, 3 pairs \$1.10.

Women's Lisle Thread and Cotton Hose, imported brands, fast dye, fine thread, close weave; black, tan and white, and variety of colors; sizes 8½ to 10. Regularly 25c and 30c. Hosiery Sale price 19c, 3 pairs 55c.

Women's Extra Fine Lisle Thread Plain Cashmere Hose, "German" make; black, tan, grey and white; fashioned; extra superfine; high spliced ankle, double spliced heel, toe and heel; sizes 8½ to 10. Regularly 50c to 65c. Hosiery Sale price 35c, 3 pairs \$1.00.

Women's Finest Qualities Lisle Thread Hose; plain silk lises, embroidered lises, shot ingrain, in colors, fancy stripes and many other kinds; sizes 8½ to 10. Regularly 50c. Hosiery Sale price 35c, 3 pairs \$1.00.

Boys' and Girls' Ribbed All-wool Black and Tan English Cashmere Stockings; good weight; soft, fine, close weave, spliced heel, toe and sole; sizes 6½ to 9. Regularly 35c. Hosiery Sale price 25c

Women's "Ten Angle" Brand Second Quality Plain Black and Tan Cashmere Hose; seamless; good weight and wearing; three-heel, toe and sole; sizes 8½ to 10. Regularly 35c and 50c. Hosiery Sale price 25c

Infants' Black 1-1 Ribbed Cashmere Hose; fine all-wool yarn; winter weight; 6 months to 2 years. Regularly 25c. Hosiery Sale price 12c

Children's Plain and Lace Lisle Thread Hose, also some fine ribbed silk lise; fashioned; extra fine thread; black, tan and white, and various colors. Regularly 25c and 30c. Hosiery Sale price 15c

Men's Fine All-wool Plain Black Cashmere Sox, seamless, "Lisle" brand; good weight; spliced heel, toe and sole; sizes 9½ to 10. Hosiery Sale price 25c

Men's Extra Fine Lisle Thread Black, Grey or Tan All-wool Cashmere Socks, "German" make; good ribbed cuff; spliced heel, toe and sole; sizes 9½ to 11. Regularly 50c. Hosiery Sale price 35c

Men's Silk Finish Lisle Thread Socks; extra fine thread; good weight; closely woven; shades black, tan, white, grey, and many other shades; also embroideries and fancy effects. Regularly 25c and 35c. Hosiery Sale price 19c, 3 pairs 55c.

The Groceries

One or Standard Granulated Sugar, 20-lb. cotton bag, per bag 50

Olive's Royal Household Flour, 40-lb. bag, per bag 50

Choice Prime Ham, 6 to 8 lbs. each, per lb. 16

Finest Corned Ham, 3 lbs. each, per lb. 16

Finest Corned Beef, 3 lbs. each, per lb. 16

Finest Creamery Butter, per lb. 20

Imported Pure Malt Vinegar, per bottle 20

Men's Combinations \$1.98

400 suits