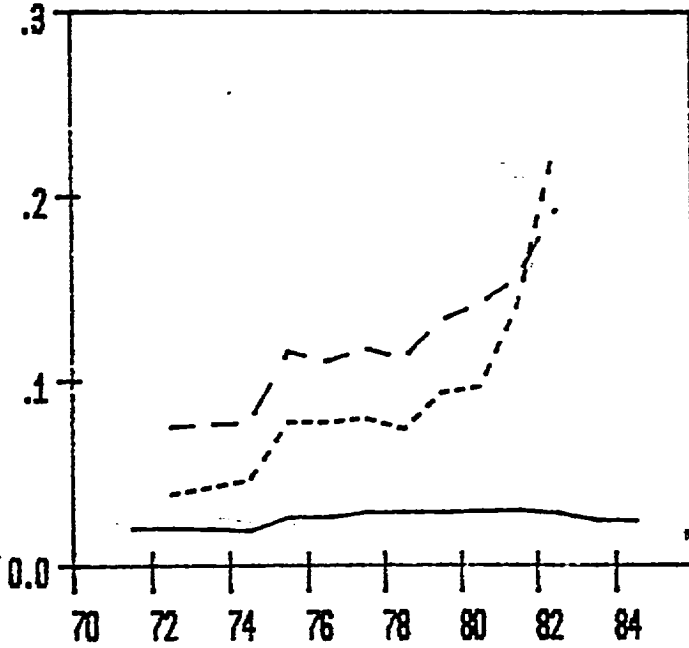
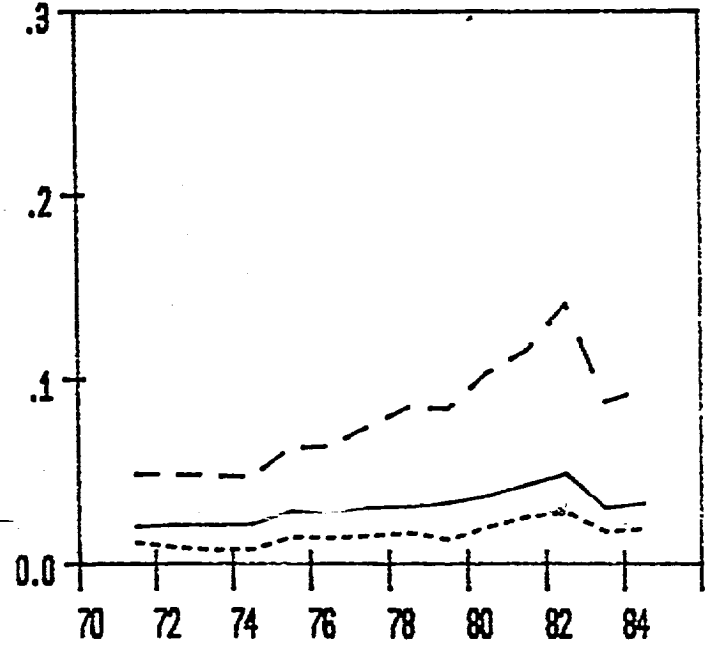


Unit Input Costs
 Nominal Dollars per unit of Real (71\$) Output
 Pulp and Paper
 Exchange Rate Adjusted

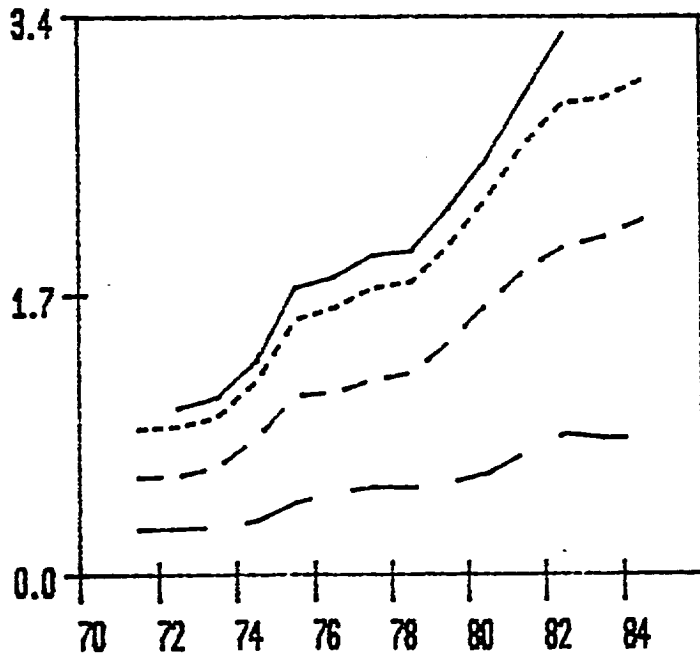
Cdn. Inputs
 Taxes (Line)
 Int. (Dot) Depr. (Dash)



U.S. Inputs
 Taxes (Line)
 Int. (Dot) Depr. (Dash)



Cdn. Input Totals
 Lab. (L Dash) Mat. (Dash) Total (Line)
 Materials, Labour and Taxes (Dot)



U.S. Input Totals
 Lab. (L Dash) Mat. (Dash) Total (Line)
 Materials, Labour and Taxes (Dot)

