

The
Do Luxe
Monthly

THE SHRINE OF FASHION

Finch Authentic Spring Modes

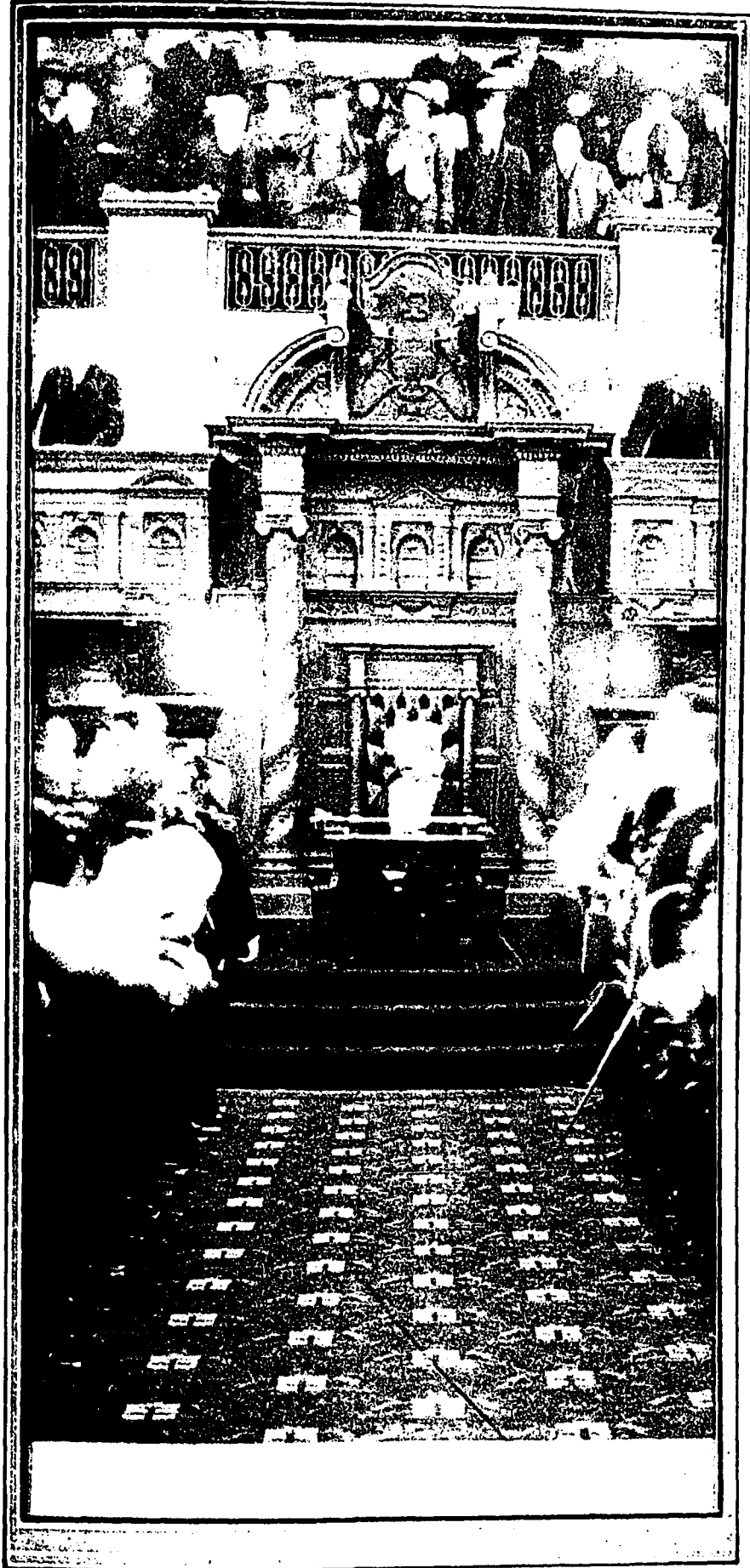
Displaying the Creme of Productions of European
and American Fashion Centres

Pattern Hats, up from	\$7.50	Tailored Suits, up from	\$25.00
Evening Gowns, up from	\$37.50	Model Suits, up from	\$37.50
Afternoon Dresses, up from	\$12.50	Street Coats, up from	\$15.00

Waists and Accessories Moderately Priced

FINCH & FINCH

YATES STREET
VICTORIA, B.C.



THE OPENING OF THE PROVINCIAL LEGISLATURE BY
LIEUTENANT GOVERNOR T. W. PATERSON
JANUARY 16TH, 1913