

ANOTHER GOLD MEDAL,

for excellence of display, awarded to
J. W. CUMMING & SON,
 New Glasgow, N. S.

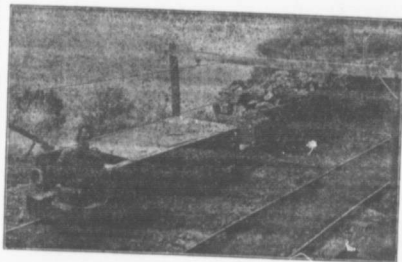
—MAKERS OF—

“Speedy” Coal Boring Machines, “Acme” Ratchet Rock
 Boring Machines, Miners’ Tools, Copper Headed
 Stemmers Copper Pointed Needles,
 Miners’ Picks, Mauls, Wedges, and
 other mining appliances.

Quality of material and Excellence of Workmanship
 —is the motto of the Firm.—

The firm a month or two ago secured an order from the Maritime Coal, Railway & Power
 Co., Ltd., 200 pit tubs. So highly satisfactory was the work that the first order was, after re-
 ceipt of the tubs, duplicated.

Jeffrey Locomotives



are necessary to maintain de-
 sired tonnage. Their superior
 design and construction is ac-
 knowledged by all operators
 familiar with their Mechanism.

Their Construction

Every detail is considered and all materials sel-
 ected after thorough testing and careful inspec-
 tion, our latest models represent the most prac-
 tical Mine Locomotives on the market.

*Write to-day for book Cf 17
 if interested in modern me-
 thods of Mine Haulage.*

The Jeffrey Mfg. Co., Canadian Office and Works:
 MONTREAL, Cote and Lagauchetiere Streets.
 MAIN OFFICE and WORKS: COLUMBUS, OHIO. TORONTO Office, 174 King Street E.