

A. B. C. & I.A. 1 Codes used.

Telegraphic Address, Latch, Haymills.

# LATCH & BATCHELOR, Ltd.

AMALGAMATED WITH  
**WEBSTER & HORSFALL,**  
(ESTABLISHED 1730.)

Works: **HAYMILLS, BIRMINGHAM, ENGLAND.**

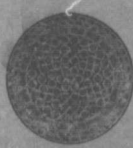
AGENT: **H. M. WYLDE,** P O Box, 529 **HALIFAX N. S.**

Patentees and Manufacturers of

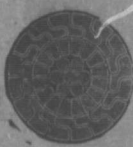
## Locked Coil and Flattened Strand **WIRE ROPES.**

Manufacturers of all Kinds of WIRE ROPES for

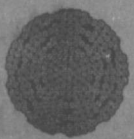
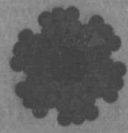
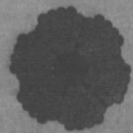
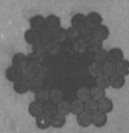
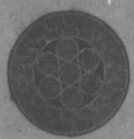
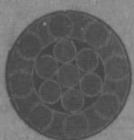
**Mines, Tramways, Aerial Ropeways, Suspension  
Bridges, Cranes, Elevators, Transmission of  
Power, Steam Ploughing and General  
Engineering Purposes.**



Locked Coil Winding Cable.



Locked Coil Aerial Cable or Colliery Guide.



Lang's Lay or Ordinary, Patent Flattened Strand Winding or Hauling, Patent Flattened Strand, (non spinning)

### **DRAWERS OF** all Sections of **HIGH CLASS STEEL-WIRE.**

for Ropes, Springs, Pianos, Needles, Fish-Hooks  
Binding Armatures and all other Purposes.