

# KNITTING MACHINERY

BRANSON MACHINE CO.

BUILDERS OF

HAND OR POWER

SEMI or  $\frac{3}{4}$  AUTOMATIC KNITTERS,

All sizes and all gauges.

Plain, Welt or Two Feed Ribbers.

Loopers and Parts.

Presses and Boards.

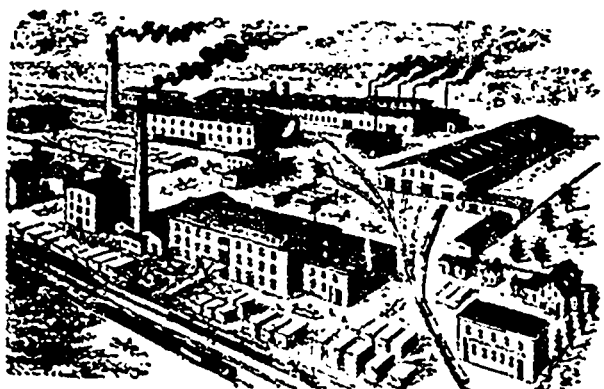
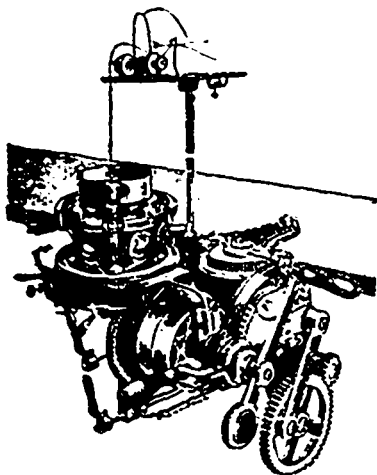
Winders and Bobbins.

Hand-Forged Steel Cylinders:

BRANSON MACHINE CO.

508 ST. JOHN STREET, - - PHILADELPHIA, PA.

Write for Information and Catalogue.



*Car Works,  
Machine Works,  
Foundry,  
Planing Mills,  
Saw Mills.*

**RHODES, CURRY & Co., Limited,**  
AMHERST, N. S.

## DIXON'S

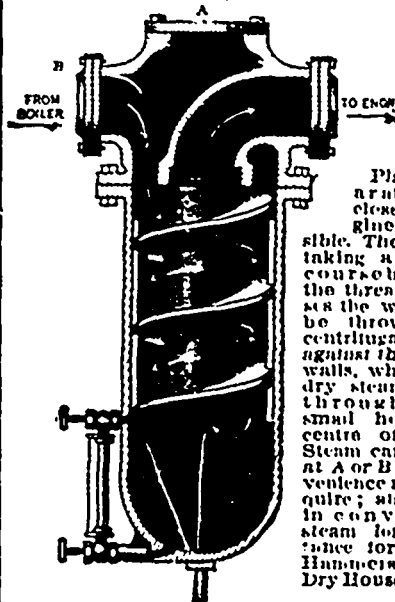
PURE FLAKE GRAPHITE is worth  
its weight in gold to any Engineer  
or Machinist.

Send for Pamphlet and Sample.—No charge.

**JOS. DIXON CRUCIBLE CO.,**  
JERSEY CITY, N. J., U. S. A.

**SIMPSON'S**  
**Centrifugal Separator**

For Supplying Clean and Dry Steam to  
Engines, Dry Houses, etc.



Place Separator as close to Engine as possible. The Steam taking a spiral course between the threads causes the water to be thrown by centrifugal force against the outer walls, while the dry steam goes through the small holes in the centre of pipe. Steam can enter at A or B as convenience may require; also used in conveying steam long distance for Steam Hammer and Dry Houses.

**KEYSTONE**  
**Engine and Machine Works**

5th & Buttonwood Sts., Philadelphia.  
Thomas Hoey, 147 Summer St., E. Boston, Mass.