

THE NEW IMPROVED

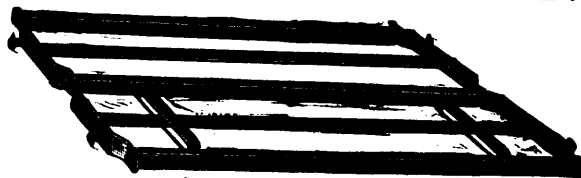
RAPID ROLLER DAMP-LEAF COPIER.

The Copier is always ready for work, copying is done instantaneously.

Six legible copies may be taken from one writing.

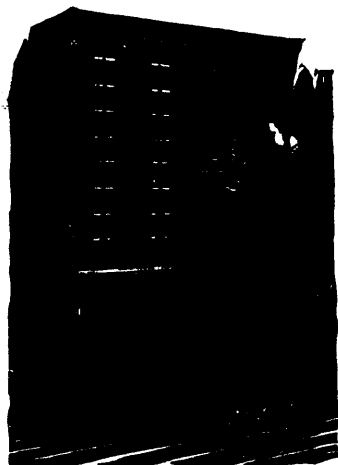
THE ONLY
PERFECT COPYING MACHINE.

Send
for
Circulars
and
Calendar.

**METAL ROLLER BOOK-SHELVES.**

STYLE
No.
3.

**THE SHANNON LETTER AND BILL FILING CABINET
IS UNEQUALLED.**



MANUFACTURED
ONLY BY THE
Office-Specialty Mfg. Co.,
SUCCESSORS TO
SCHLICHT & FIELD CO.
TORONTO, ONT.

MACHINE BRUSHES

All kinds, Made to Order.

Highest Quality of Work Guaranteed.

SEND FULL PARTICULARS OF DIMENSIONS AND QUALITY WHEN ORDERING.

Old Rollers or Blocks Re-filled with special care.

CHAS. BOECKH & SONS,

MANUFACTURERS,

Office and Warerooms : 80 York St.

Factory : 142 to 150 Adelaide St. W.

TORONTO, CANADA.

Established 1828.

J. HARRIS & CO.

(Formerly Harris & Allan).

New Brunswick Foundry

RAILWAY CAR WORKS,
Paradise Row.
PORTLAND ROLLING MILLS,
Strait Shore.

PORTLAND, ST. JOHN, N.B.

Railway Cars of all descriptions. Chilled Car Wheels, "Washburn Peerless" Steel Car Wheels. Car, Machine, Mill, Ship and all kinds of castings. Steam Engines, Mill and other Machinery. Nail Plate, Bar Iron, Street and Mine Rails, Ships' Iron Knees, Hammered Car Axles, Shafting and Shapes.

Established 1872.

- THE ACCIDENT - Insurance Co'y of North America.

NEW FEATURE,
**JOINT INSURANCE
FOR PARTNERSHIPS**

IMPORTANT TO MANUFACTURING FIRMS.

MEDLAND & JONES, Gen'l Agents,
Cor. Adelaide and Victoria Sts., TORONTO.

THE BELL TELEPHONE CO'Y OF CANADA

—Manufacturers and Dealers in—

Telegraph & Electrical Instruments,

Electro-Medical Apparatus, Fire Alarm Apparatus,
Magnets for Mills, Electrical Gas Lighting Apparatus,
Burglar Alarms, Hotel and House Annunciators,
Electric Call Bells, &c., &c.

FOR FURTHER PARTICULARS APPLY TO

No. 12 HOSPITAL ST., MONTREAL.