

APRIL 13, 1911

QUESTIONS AND ANSWERS.
Miscellaneous.

A WOOD-BORING INSECT.

E. B.—There are many species of beetles whose larvae bore in dry timber and thereby do much damage to it. The specimen of wood sent is certainly badly riddled, although we do not find any of the offending larvae in it. Is it practicable to saturate the affected parts with coal oil, either refined as used in lamps, or crude? If you can apply the oil, we should be glad to hear of the result.

J. D.

ESTIMATING CORDWOOD IN LOG

Could you kindly advise me how to measure cordwood in the log. I am aware that 128 cubic feet make one cord, but if a log is squared, there is the slab, or the overs, from the squared log. I am going to cut cordwood into 16-inch lengths with a sawing-machine.

W. McL.

Ans.—So far as we are aware, there is no rule for measuring cordwood in the log. As a general thing, when wood is split, it piles out more, it makes a bigger pile than it would if piled without being split. The air spaces in the pile form a larger percentage of the whole space occupied. A theory which some use to estimate cordwood before the logs are split, is to count the diameter of a log as if it were one side of a square. For instance, a log is one foot in diameter. This log might be expected, when split, to pile out to fill a space one foot square. Thirty-two such logs would, in that case, make a cord. Or, a log two feet in diameter would fill, when split, a space of two feet square, equal to four square feet. Eight of such logs would make a cord.

CLOVER SEEDING FOR PLOWING UNDER—FERTILIZER FOR SUGAR BEETS.

1. I have a field that was plowed out of sod last summer just after the hay was taken off, and was well worked with disk and drag harrow the balance of the season. I want to sow this field this year with mixed grain, and seed with clover. What I want to know is, if I plant that same field the following year in corn, and plow just before planting, will the clover be of enough advantage to the land, and for pasture in the fall, to make it pay? Also how much clover to the acre had I better sow?

2. We have been trying to keep pigs, and fatten pretty much on grain alone, and find it does not pay. This year I intend trying to grow some sugar beets. I have a little piece of ground that was manured last fall and plowed. In order to get a real good crop, would it pay me to apply some commercial fertilizer as well? What kind would be best to use, and how best to apply?

A. B. M.

Ans.—1. Experiments conducted at Ottawa show emphatically that it pays to sow clover seed even on land that is to be plowed the succeeding fall. If left, as you suggest, until spring, the benefits would be more marked. It is recommended to sow 10 or 12 lbs. of clover seed per acre. Mammoth is better than common red for this purpose.

2. In order to know what fertilizers are best, not only should the kind of crop be considered, but also the soil. There is as great a difference in the needs of soils as in those of the various crops. The experiments in the use of fertilizers conducted under the oversight of Prof. Zavitz, O. A. C., Guelph, go to show that in almost every case the complete fertilizers—that is, those containing the three elements of nitrogen, phosphoric acid and potash—gave the best results, cost considered. If there is a sufficiency of barnyard manure, there is no need to bother with commercial fertilizers.

Salt is a great stimulant to beets and mangels. Look up the letter of J. C. Nottingham, which appeared in "The Farmer's Advocate" of February 23rd, page 341. He sowed 400 lbs. salt and 150 lbs. nitrate of soda, in addition to manure, on one-third of an acre, and had a wonderful crop of mangels. The nitrate was applied, as it should be, in several applications after crop is up. The other manurial constituents should be worked in.

THE FARMER'S ADVOCATE.

Send For My FREE Book About
Pedlar Nestable
Corrugated **Culvert**
Learn how It Saves Farmers Money

If you think you have no use for my Culvert, you may change your mind when you read this book of mine. As it is sent you entirely free you may as well write for a copy, anyway. You'll find it

This book cannot fail to interest you—so much that you'll want to show it to your neighbors. Because it points a way to better roads and lower taxes. You'll want your township reeve or road commissioner to read it, too.

Costs you nothing, remember. Just give me your name and address and I'll send you a copy FREE.

Tells About the Most Practical, Durable, Strongest and Easiest Laid Culvert Made

My Culvert actually costs less than the cheapest and poorest wooden culverts. No skilled labor needed to put it in place. Shipped in half-sections, nested, saving freight and making it easy to handle. Not only makes good roads possible, but has a score of uses on your farm. My book shows how. Let me send you a copy.

I'll also send you FREE a Sample of My Culvert

Write Your Name and Address Here

and clip this part out and send it to me. Or simply send a postal and say you want Booklet No. 20

ADDRESS

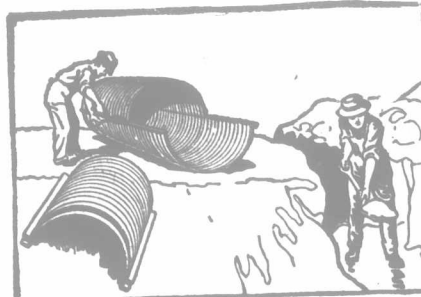
so you can see how it is made, how strong and handy it is. If you state your possible needs when you write I'll be glad to quote prices. Send for the book, now, anyway. It's free, remember.

The PEDLAR PEOPLE of Oshawa

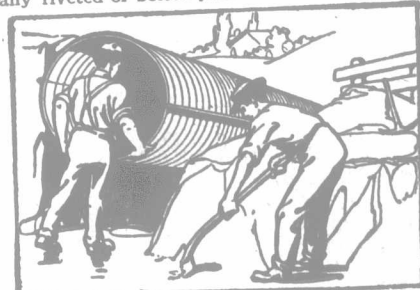


ADDRESS MY NEAREST PLACE

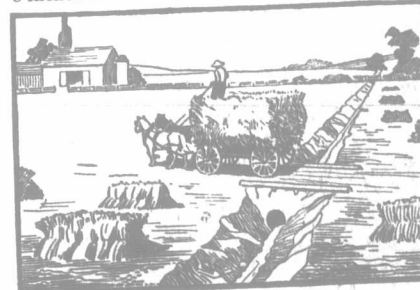
HALIFAX 16 Prince St.	ST. JOHN 42-46 Prince William St.	QUEBEC 127 Rue de Pont	MONTREAL 321-3 Craig St. W.
OTTAWA 423 Sussex St.	TORONTO 111-113 Bay St.	LONDON 86 King St.	CHATHAM 200 King St. W.
PORT ARTHUR 45 Cumberland St.	WINNIPEG 76 Lombard St.	REGINA 1901 Railway St. S.	CALGARY Room 7, Crown Block
EDMONTON 633 Fifth Ave., North of Jasper	VANCOUVER 319 Pender St.	VICTORIA 434 Kingston St.	



Pedlar Culvert comes in half-sections for economy in shipping and ease in handling. Easily put together, tighter and better than any riveted or bolted-joint can be.



A few hours work puts this modern, permanent culvert in place, so it won't wash out or need repairs. Easily laid by anybody. All sizes—8 inches to 6 feet in diameter. Strong, durable.



It should interest you greatly to know how little it would cost you to use this better Culvert instead of a make-shift that is always giving you trouble.



Where you bridge over ditches and drains you'd find Pedlar Culvert the easiest to lay and the most economical you could use. Let my book make it all clear to you. Write NOW.

CALF MEAL

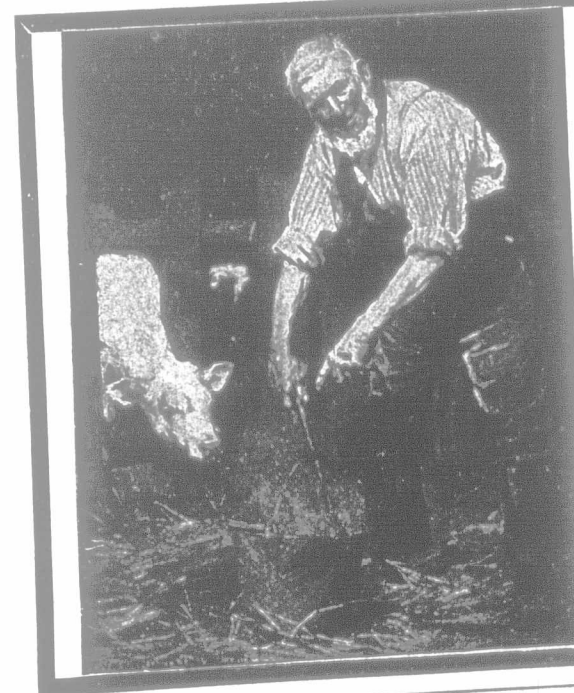
BIBBY'S CREAM EQUIVALENT

Young Calves develop and grow surprisingly well when fed "Cream Equivalent" either with or without separated milk. It is not a drug or "FAKE" meal. Made by one of the most honorable firms in England. Has the largest sale of any Calf Meal in the World. Canadian Government report shows it to contain the highest percentage of nutritive value. TRY A BAG, 50 lbs. \$2.25.

Can be fed with either Hot or Cold water.

DEALERS EVERYWHERE SELL
BIBBY'S CREAM EQUIVALENT

WM. RENNIE CO. LIMITED TORONTO
CANADIAN REPRESENTATIVES



The Frictionless Empire has fewer wearing parts than any other cream separator. Costs the least for "Upkeep." Get our catalog and learn other superior features.

The **EMPIRE** Line
"Everything that's good in Cream Separators"
Empire Cream Separator Company of Canada, Ltd.
WINNIPEG TORONTO SUSSEX, N.B.

When Writing Please Mention The Advocate.