

**It's Here! The engine
a thinking man
will buy—**

The new Z Engine

1½ H.P.

**On Skids With
BUILT-IN
MAGNETO**

\$65.

Absolutely the one great, convincing engine value.

**Fairbanks-Morse Quality
at a Popular Price**

That's the story in a nutshell. This new "Z" Engine puts dependable—efficient—economical "power" within the reach of every farm.

**All Sizes Can be Shipped
Immediately from Stock**

Simple—Easy to Operate—Light Weight—Substantial—Fool-proof Construction—Gun Barrel Cylinder Bore—Leak-proof Compression—Complete with Built-in Magneto. Quick starting even in cold weather. Low first cost—low fuel cost—low maintenance cost. That's the new "Z."

Go to Your Dealer and See the "Z"

Inspect it. Compare it. Match it point by point. Have him show you the features that make the new "Z" the greatest engine value offered. You'll buy it.

**The Canadian
Fairbanks-Morse
Co., Limited**

St. John, Montreal, Toronto,
Winnipeg,
Saskatoon,
Calgary,
Vancouver.

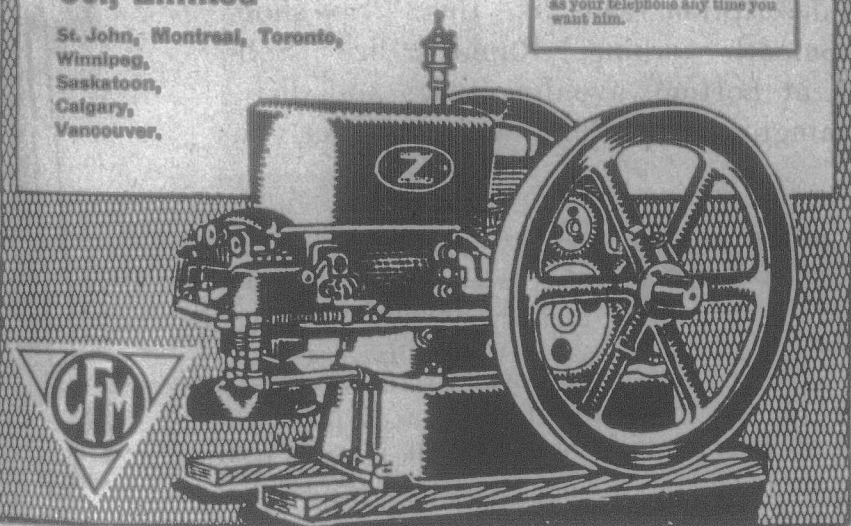
3 H. P. \$115.

6 H. P. \$205.

**F.O.B. Montreal
or Toronto**

**Important Dealer
Service**

When you buy an engine from your dealer you deal with a local representative of the manufacturer. He shares their responsibility. He stands behind the engine he sells. He's responsible to you. He's at your service to see that you are satisfied, and he's as near you as your telephone any time you want him.



"MONARCH" ENSILAGE CUTTER

The ideal straw and ensilage cutter, being strong and simple, fast and durable. The "MONARCH" will stand all the heavy work and hard knocks that a machine of this type always receives.

It is built on solid metal frame, rigidly under-trussed, and cannot warp or deteriorate by exposure to weather. Flanges on all sides of feed mouth make it easy to gather feed into the rollers. All gears enclosed in metal covers. Quick, positive action, reverse lever. Semi-steel fan wheel, cast in one piece, no loose parts to come off. Highly-tempered knife has straight, heavy blades, easily removable for sharpening. Shear plate is made accident-proof. We can amply guarantee this machine, because we made it perfect.

See it at Toronto and London Exhibitions.

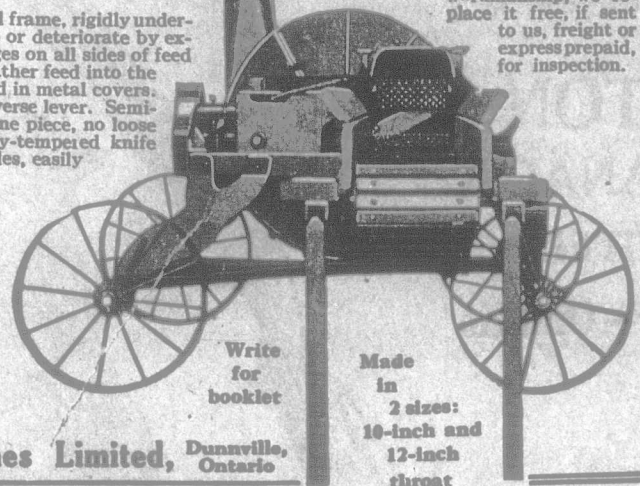
At both fairs we will be in the same locations as last year, and cordially invite your visit and inspection.

Canadian Engines Limited, Dunnville, Ontario

OUR REAL GUARANTEE

We guarantee this machine to be made of first-class material by first-class workmen, and that it will cut and elevate as much or more than any other of the same horse-power.

If any part breaks during the first year because of inferior material or workmanship, we replace it free, if sent to us, freight or express prepaid, for inspection.



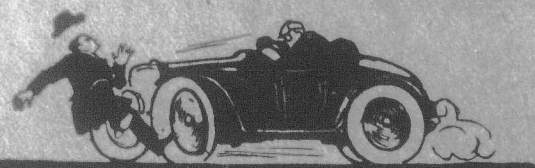
Write
for
booklet

Made
in
2 sizes:
10-inch and
12-inch
throat

OUR LATEST IMPORTATION OF CLYDESDALES
arrived at our barns late in November. A number of them since have been prominent winners at both Guelph and Ottawa. But we have others (both stallions and mares) that were never out, the majority of the stallions weigh around the ton, and better quality and breeding were never in the stables. Come and see them. We like to show them. **SMITH & RICHARDSON, COLUMBUS, ONT.**

When writing advertisers will you kindly mention The Farmer's Advocate?

FIRST AND PARAMOUNT,
ABSOLUTE SECURITY TO POLICYHOLDERS



"I'll take the chance of my early death," you say.

But you don't take the chance—you compel your wife and little ones to take it. Do you think that's fair to them?

Don't risk their future welfare! Invest a few dollars each year in an Imperial Life policy. It will provide for your family if you should die—it will care for yourself if you live to old age.

Our free booklet, "The Creation of an Estate," tells more about it. Ask for a copy to-day. You'll find it interesting.

**THE IMPERIAL LIFE
Assurance Company of Canada**
HEAD OFFICE - TORONTO

Branches and Agents in all important centres

Copyright



BE INDEPENDENT

IT IS YOUR SAVINGS, NOT PAY CHECKS THAT COUNT

The average town worker with a family cannot save more than \$120 a year. Rent, food, clothing and expensive amusements take the rest. Once his machinery, seed and live stock are paid for the average Western Farmer has a yearly turnover of \$500 and up, his own.

OWN A WESTERN FARM

by Homesteading along the lines of the Canadian Northern Railway, where the newest and most fertile sections are still open for settlement.

Booklets and information on application to General Passenger Departments: Montreal, Que.; Toronto, Ont.; Winnipeg, Man.

CANADIAN NORTHERN RAILWAY

If you are in need of a CREAM SEPARATOR

Let us ship you a

"Sanitary King"

Six sizes—125—200—250—375—600 and 800 lbs. capacities.

DETACHABLE SPINDLE, OIL SPLASH and loose discs. We GUARANTEE these machines to be built of the best material, first-class workmanship, skin clean, easy to turn and wash. Cash prices very low. Must satisfy or money refunded. Sold on easy terms if desired. Write to-day for catalogue and local agent's address.

**King Separator Works
Of Canada,
BRIDGEBURG, ONTARIO.**



Rebuilt Traction and Portable Engines and Threshers

Suitable for Farmers and Threshers' use, at very reasonable figures.

**The Robert Bell Engine and
Thresher Company, Limited
SEAFORTH, ONTARIO**

Please mention The Farmer's Advocate