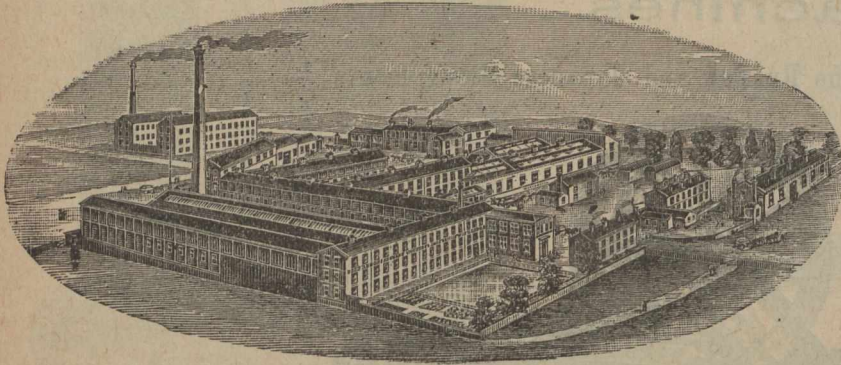


Telegraphic Address:
"HASTE, BRAMLEY, LEEDS."

Haste & Brown,

Hough End Tannery,
BRAMLEY, LEEDS, - Eng.

—Tanners, Curriers,-
Enamellers & Japanners.



Russet Lining Bellies and Shoulders, of Light Substance, Soft, Bright and Dry Finish. ENAMELLERS and JAPANERS of the finest goods in ENAMELLED and JAPANED LEATHERS in SHOULDERS and HIDES, SEALSKINS and CALF SKINS in Black and Colours.

NOTE.—The "Eagle" Perfection Brand is the motto for the High-class Standard of Selection and Quality in these Goods.

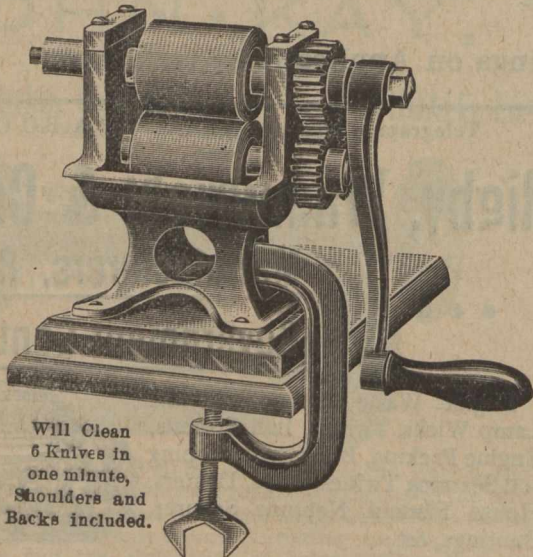


Enamelled Shoulders. Enamelled Sealskins. Enamelled and Japanned Hides. East India Kips, Ofal, etc., Waxed or Russet Kip Butts. Levant Kip Shoulders and Bellies. Levant Imitation Seal Grains. Split and Russet Shoulders for Enamelling. Japanned Shoulders (in black and colors). Japanned Seal Splits. Japanned Hide Splits. Waxed Kip and Calf Butts. Rough Kip Butts for Laces or Waxing purposes. Large assortments always on hand. Stained Hide and Kip Bellies, etc. to any shade and requirement.

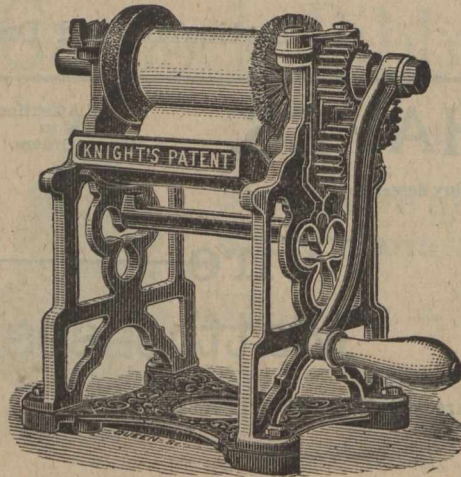
ARE YOU WANTING A REALLY GOOD **KNIFE CLEANER?**
TRY KNIGHTS PATENT.
THE BEST MACHINE TO USE OR SELL.

Made in 5 Sizes for 12/6 to 30

KNIVES
POLISHED
LIKE
SILVER.



Will Clean 6 Knives in one minute, Shoulders and Backs included.



Will clean 8 Knives or 8 Forks in one minute.

NO
DAMAGE
TO
CUTLERY.

SPLENDID VALUE. QUICK SELLING LINE.

MANUFACTURED SOLELY BY

John Crowley & Co., Ltd., Sheffield, Eng.

ESTABLISHED OVER A CENTURY.

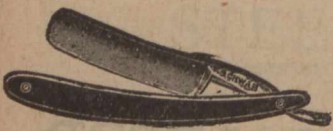
GEORGE JOHNSON & CO.,

Cutlery and Razor Manufacturers,

Schwab's Razors, Full Hollow Ground.

Never requires Regrinding. Black handles 32s. per doz. Ivory handles, 50s. per doz.

Makers of the Celebrated "Seven Stars" and "Ripe and Dart" Razors, in great variety, with either Flat or Hollow-Ground Blades. Made from Highly Refined Steel.



BEST and CHEAPEST ADVERTISING MEDIUM.

Cheap Enough to give away.

PATENT CORK SCREW



Any name or firm printed on free of charge.

For Prices, &c., Apply to

BECK & POLLITZER, 29 Upper Thames Street
LONDON, E.C. Eng.
USEFUL AND ATTRACTIVE PRESENT

29. Norfolk Lane, - - SHEFFIELD, ENGLAND.