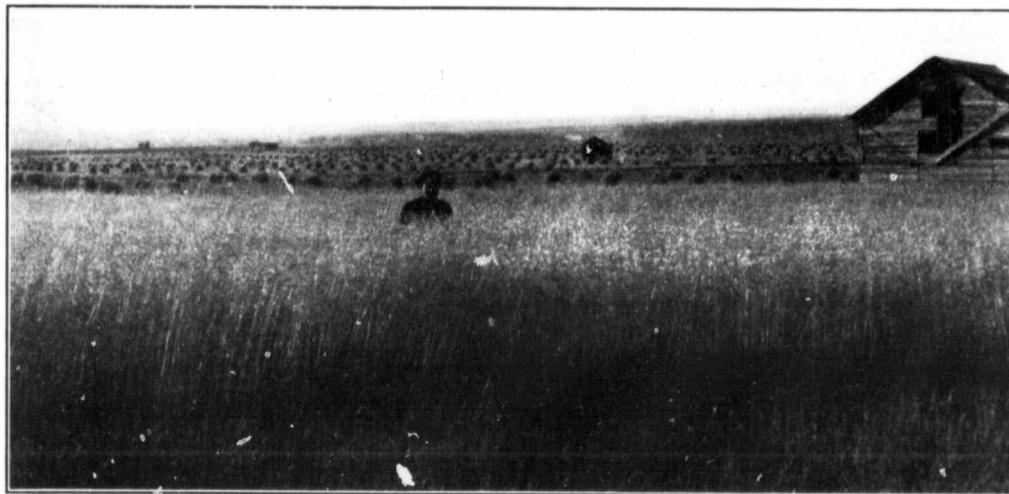




Province of Alberta



ALBERTA HARVEST SCENE

For the third consecutive year, the Province of Alberta stands first in the Dominion for crop production. In this critical time in the world's food situation, we are favored with a splendid crop of better than average quality. At present prices such a crop will be the most profitable ever harvested in the province.

Following two heavy crops, this year's crop has put the farmer in a strong position financially. Land values are stronger and sales have been more frequent, especially in the wheat districts, than ever before.

Prices for grain and live stock are record-breaking. The live stock industry for the province has been strengthened by the accession of many famous animals and the live stock exhibits this season were the best in the history of the province.

Alberta's supremacy as a stock-raising country is becoming more and more apparent. Great expansion is taking place from year to year in all lines of live stock. Experience and available figures support the prophecy that although grain prices may recede after the war, live stock prices must continue high for many years to come.

Alberta dairy products are still in the lead, winning high honors at all the important exhibitions against the exhibits from every Canadian province and was pronounced the finest display in Canada. Alberta butter is preferred over all other Canadian butter for domestic and export trade.

The prosperity of Alberta's farming population is having some effect in the towns and cities in making general trade good and somewhat raising the sub-normal level of rents. The general situation as affected by Alberta farmers' earnings is well illustrated by the fact that twice as many licenses for automobiles were issued in the first six months of 1917 as during the whole of 1916. A single agent in one of the smaller cities placed an order for one million dollars' worth of a certain car, for delivery within fourteen months.

Immigration of United States farmers into Alberta is greater than at any time in the last four years. During the first ten months of the present year, immigration returns show over 100 per cent increase and 200 per cent more than 1915 figures.

Alberta still has thousands of free homesteads, many of which are within close proximity to railway facilities awaiting settlers.

For Full Particulars apply to

HON. DUNCAN MARSHALL,
Minister of Agriculture,
EDMONTON, ALBERTA.

CHARLES S. HOTCHKISS,
Chief Publicity Commissioner,
Department of Agriculture,
EDMONTON, ALBERTA.