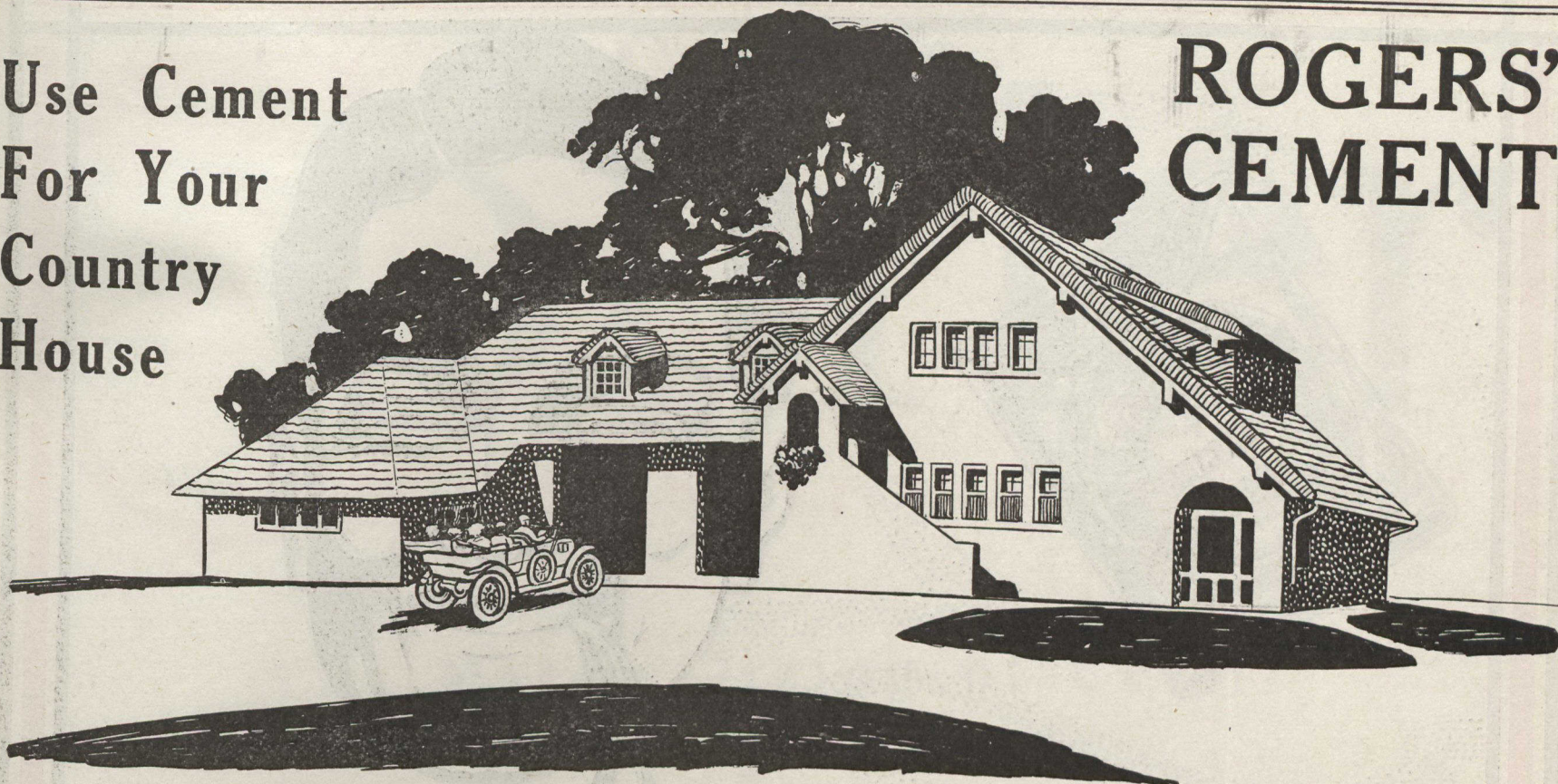


Use Cement
For Your
Country
House

ROGERS'
CEMENT



BUILD your Country Residence or Suburban House in Cement Stucco and Concrete made from ROGERS' CEMENT—the Portland Cement that we keep "always the same" in our mills. You get one of the most "workable" materials for attaining at low cost exquisite curvatures and free design effects for the modern house—especially for sloping sites. Use it with a roof of red Spanish tile, and year by year as the trees surround it, your home becomes more and more a beautiful picture. Remember, ROGERS' CEMENT makes a safe and fire-retardant home—warm, vermin-free, strongly built, comfortable in the hottest summer or the coldest winter.

If you want to erect a good home, specify ROGERS' CEMENT as the main building material.

REMEMBER your grounds may need walks. You may want a pergola. Perhaps you want a formal garden. Maybe, you'd like to terrace your land. ROGERS' CEMENT comes in as the one material for walks, walls, pergola columns and beams, garden furniture. Our book at \$1.00, "Portland Cement on the Farm," will show you hint after hint on how to improve your Suburban or Country home. Send for it. We sell it at less than cost.

ALFRED ROGERS LIMITED - TORONTO

The Royal Line

To Europe

Luxury with Economy

3 Days on the Atlantic

THE ST. LAWRENCE ROUTE

No more magnificent river trip can be found anywhere else in the world. A two-day sail down the mighty, placid river on the splendid Royal Mail Steamships

ROYAL EDWARD
ROYAL GEORGE

Two days of unequalled scenic and historic interest. Then a little more than **THREE DAYS ON THE ATLANTIC** to Bristol (Avonmouth). Special Express Trains whisk the traveler to London in two hours.

These steamers are in a class by themselves in Appointment, Seaworthiness and Beauty of Interior.

For all information apply to Steamship Agents, or the following General Agencies of the Company: Toronto, Ont., Canadian Northern Building; Montreal, Que., 226 St. James St.; Halifax, N.S., 123 Hollis St.; Winnipeg, Man., 272 Main St.

CANADIAN PACIFIC

GREAT LAKES SERVICE—Five Sailings Weekly

From PORT McNICOLL to
S. STE. MARIE - PORT ARTHUR - FORT WILLIAM

Making close connections for all points west.

STEAMBOAT EXPRESS

Leaves Toronto 12.45 p.m. Mondays, Tuesdays, Wednesdays, Thursdays and Saturdays, making direct connection with steamers at Port McNicoll.

Full information from any C.P.R. agent, or write M. G. Murphy, Dist. Pass. Agent, Toronto.

GRAND TRUNK RAILWAY SYSTEM

SPRING FISHING

"The Highlands of Ontario"
Is the Fisherman's Paradise.

THE GRAND TRUNK RAILWAY SYSTEM
THE DOUBLE TRACK ROUTE

Is the only line reaching all these resorts.

THE KIND YOU CATCH WHERE THEY ARE CAUGHT.

MUSKOKA LAKES—Black Bass, Pickerel, Salmon Trout.
KAWARTHA LAKES—Speckled Trout, Black Bass and Maskinonge.
LAKE OF BAYS—Speckled Trout, Salmon Trout, and Black Bass.
ALGONQUIN PARK—Speckled Trout, Black Bass, and Salmon Trout.
TEMAGAMI—Black Bass, Lake Trout, Speckled Trout, and Wall-eyed Trout.
LAKE NIPISSING—Black Bass, Maskinonge, Pickerel, and Pike
GEORGIAN BAY—Black Bass, Salmon Trout, Lake Trout, Pickerel, and Trout.

OPEN SEASONS.

BLACK BASS—June 16th to April 14th following year.
SPECKLED TROUT—May 1st to September 14th.
SALMON TROUT AND LAKE TROUT—Dec. 1st to Oct. 31st following year.
MASKINONGE—June 16th to April 14th following year.
PICKEREL—May 16th to April 14th the following year.

Write to the following Agents for full particulars—how to get there, maps, rates, etc.: A. E. DUFF, Union Station, Toronto, Ontario; J. QUINLAN, Bonaventure Station, Montreal, Quebec; W. E. DAVIS, Passenger Traffic Manager, Montreal; G. T. BELL, Asst. Passenger Traffic Manager, Montreal; H. G. ELLIOTT, General Passenger Agent, Montreal.