

All the Latest News and Comment from the World of Finance

STOCK QUOTATIONS ON N.Y. EXCHANGE

(McDougall & Cowans)

	Open	High	Low	Close
Amal Cop	73 1/4	73 3/4	72 3/4	72 3/4
Am Beet Sug	48 1/4	48 3/4	48	48
Am Car Ry	54 1/4	55 1/4	54 1/4	54 1/4
Am Loco	50 1/4	51 1/4	49 1/4	49 1/4
Am Smelt	78 1/4	79 1/4	77 1/4	78 1/4
Anacosta	34 1/4	35 1/4	34 1/4	34 1/4
Am Tele	120 1/4	121 1/4	120 1/4	120 1/4
Beth Steel	175 1/4	176 1/4	174 1/4	175 1/4
Atchison	100 1/4	101 1/4	100 1/4	100 1/4
Chino	45 1/4	46 1/4	45 1/4	45 1/4
Am Can	51 1/4	52 1/4	50 1/4	51 1/4
Cent Leath	41 1/4	42 1/4	41 1/4	41 1/4
Balt and O Co	77 1/4	78 1/4	76 1/4	77 1/4
C F I	33 1/4	34 1/4	33 1/4	33 1/4
Ches and Ohio	37 1/4	38 1/4	37 1/4	37 1/4
Cons Gas	127 1/4	128 1/4	126 1/4	127 1/4
Can Pac	143 1/4	144 1/4	142 1/4	143 1/4
Erie Com	25 1/4	26 1/4	25 1/4	25 1/4
Gr Nor Pfd	116 1/4	117 1/4	115 1/4	116 1/4
Lehigh Val	141 1/4	142 1/4	140 1/4	141 1/4
Miss Pac	38 1/4	39 1/4	38 1/4	38 1/4
NY NH and H	59 1/4	60 1/4	58 1/4	59 1/4
N Y Cent	86 1/4	87 1/4	85 1/4	86 1/4
Nor Pac	104 1/4	105 1/4	104 1/4	104 1/4
Penn	105 1/4	106 1/4	105 1/4	105 1/4
Press Bldg	49 1/4	50 1/4	48 1/4	49 1/4
Reading Com	146 1/4	147 1/4	145 1/4	146 1/4
Rep Steel	30 1/4	31 1/4	29 1/4	30 1/4
St Paul	81 1/4	82 1/4	80 1/4	81 1/4
Sto Pac	86 1/4	87 1/4	85 1/4	86 1/4
Sou Ry	14 1/4	15 1/4	14 1/4	14 1/4
Un Pac Com	126 1/4	127 1/4	125 1/4	126 1/4
U S Steel	61 1/4	62 1/4	60 1/4	61 1/4
U S Rub Com	10 1/4	11 1/4	10 1/4	10 1/4
Westing Elec	104 1/4	105 1/4	103 1/4	104 1/4

NEW YORK COTTON MARKET SALES

	High	Low	Close
Jan	25.50	25.25	25.45
Mar	25.75	25.50	25.65
May	25.94	25.69	25.87
July	26.07	25.82	25.95
Oct	26.14	25.89	26.09

REAL ESTATE RECORDS.

The following transfers of property in St. John and Kings counties have taken place within the past few days:

St. John County.
E. J. Hattery to Mrs. A. M. Bouillon, property at Simonds.
Louisa and H. S. Ritchie to Mrs. T. J. Phillips, property at Lancaster.
W. G. Waters to F. E. Godwin, property at Simonds.
Kings County.
Heirs of J. N. Barnes to Matilda C. Barnes, property at Greenwich.
F. B. Corey to Harry McLaughlin, property at Harlock, valued at \$310.
H. S. Jones to G. B. Jones, property at Sussex.
H. S. Jones to Eliza G. Jones, property at Sussex.
M. P. Kierstead to J. W. Ganong, property at Springfield, valued at \$90.
Bernard McLaughlin to Jacob Noris, property at Sussex, valued at \$75.
Heirs of Peter McGonigle to Frances E. McLaughlin, property at Upham.
Heirs of James McHugh to G. B. Jones, property at Simonds.
Lavina Murphy to Dennis Murphy, property at Kingston.
R. A. Mealey to James Mealey, property at Springfield, valued at \$100.
G. R. Pearson to Ella Pearson, property at Simonds.
T. W. Phipps to G. L. Sharp, property at Sussex, valued at \$300.
D. H. Rees to W. H. Mabey, property at Simonds, valued at \$50.
R. S. Sherwood to J. R. Cuming, property at Rothesay.
Eliza A. Sprague to W. D. Giles, property at Springfield, valued at \$400.

MINIATURE ALMANAC.

July—Phases of the Moon.

	4th	11th	18th	25th
Last quarter	4th	11th	18th	25th
New moon	12th	19th	26th	3rd
Full moon	19th	26th	3rd	10th

DOMESTIC PORTS.

July 11—Passed south: Tern sch Margaret May Riley, New York; Sch Palatia, do.

Sid July 12: Tern Sch Rothesay, north.

Port Hawkesbury, July 14—Ard: Sch Wanola, New York for Montague, P. E. I.

Newcastle, July 13—Old. Bktn Caroline, Knoch, Rasmussen.

BRITISH PORTS.

Manchester, July 10—Ard: Strs Fane (Nor), Thorsen, Bathurst, N. B.; Fernfield, Montreal; Manchester Inventor, Butler, do; Silkeborg (Dan), Louisburg, C. B.

Sid July 10: Strs Kelvinbrae, Brair, New Orleans; Wladimir Sawia (Dan), Wittenkamp, Quebec.

London, July 11—Sid: Strs Archne, Sergeant, Montreal; Messina, Anderson, St. John, N. B.

Bristol, July 11—Ard: Str Exeter City, Macdonald, New York.

Sid July 11: Str Bifrost (Sw) Sydne, C. B.

FOREIGN PORTS.

Perth Amboy, N. J., July 12—Ard: Strs Farmand (Nor), Havana; Schs H R Silver, New York (and all for Campbellton, N. B.); Albertha, New York; Beatrice L. Corkum, do; B B Hardwick, do.

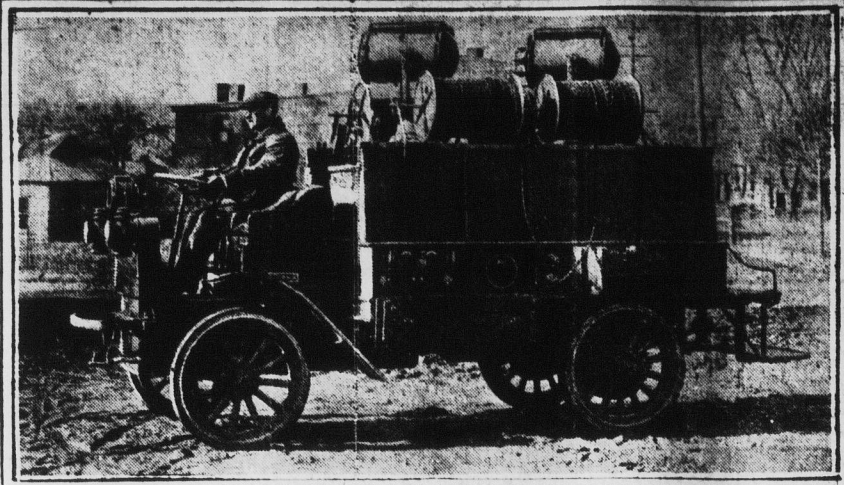
Sabine, Tex, July 8—Sid: Sch E A Sabean, Kingston.

Baltimore, July 13—Ard: Strs Orithia, Morris, St. John.

Bridgeport, Ct, July 12—Sid: Sch Laura C Hall, New York.

New York, July 12—Ard: Schs Jes-

DEVELOPS AUTOMOBILE WITH FIELD SEARCHLIGHT



AUTOCAR FIELD SEARCHLIGHT

The Autocar Company, of Ardmore, Pa., has developed a field searchlight for military purposes, which has been demonstrated at Philadelphia and at Washington, D. C.

The electrical apparatus of this equipment is mounted on a standard Autocar chassis. The body is designed so as to furnish protection for the power plant and to support the four reels of flexible cable and the spring mounted tracks, on which the two searchlight hand trucks rest.

Each searchlight is fourteen inches in diameter and is effective up to one and one-half miles on a clear night.

WAR SPECIALTIES AGAIN CHIEF FEATURE OF WALL ST. EXCHANGE

Representative Stocks either totally neglected or under moderate pressure—Market irregular at the close with several slight losses.

New York, July 14.—To a greater extent than before today's stock market was governed by the course of the war contract or munition issues. This group absorbed the major portion of speculative attention, with new high prices for American Can at 52, Studebaker at 82 7/8, Baldwin Locomotive at 71 1/4, General Motors at 18 1/2, and Willys Overland at 136. Other stocks in the same class rose two to four points, the conspicuous exception being American Coal Products, which forfeited six points of its recent sensational advance.

Meantime representative investment stocks were either neglected or under moderate pressure. United States Steel was the only leader to rank with war specialties in point of activity, but failed to equal its best quotation of the previous day. Reading, C. P. R. and Amalgamated Copper reflected more or less steady selling.

New features of strength were seen in such utilities as Western Union and Consolidated Gas, the former advancing almost three points on intimations that the semi-annual statement to be issued tomorrow will show a substantial net increase of earnings. Trade developments were distinctly favorable to the steel industry further price advances being announced by some of the leading mills. Lackawanna Steel's quarterly statement, disclosing a net increase of over \$100,000, explains the recent improvement in that stock.

Following its usual custom the market shaded generally in the final dealings, when the demand for most of the specialties showed signs of having run its course, for a time at least. The closing was irregular with some slight net losses, notably in Canadian Pacific, Southern Pacific and Reading. Missouri, Kansas and Texas issues were weakly, the preferred stock selling at the new low price of 17.

Total sales amounted to 472,000 shares. Prices were the feature of today's foreign exchange market, cables and checks on Paris strengthening perceptibly in anticipation of the successful outcome of the credit operations now pending with our bankers.

Heavy sales of United States Steel five and consolidated Gas stakes marked the dealings in the bond market. Total sales, par value, were \$2,345,000.

World's Shipping News

MINIATURE ALMANAC.

July—Phases of the Moon.

	4th	11th	18th	25th
Last quarter	4th	11th	18th	25th
New moon	12th	19th	26th	3rd
Full moon	19th	26th	3rd	10th

DOMESTIC PORTS.

July 11—Passed south: Tern sch Margaret May Riley, New York; Sch Palatia, do.

Sid July 12: Tern Sch Rothesay, north.

Port Hawkesbury, July 14—Ard: Sch Wanola, New York for Montague, P. E. I.

Newcastle, July 13—Old. Bktn Caroline, Knoch, Rasmussen.

BRITISH PORTS.

Manchester, July 10—Ard: Strs Fane (Nor), Thorsen, Bathurst, N. B.; Fernfield, Montreal; Manchester Inventor, Butler, do; Silkeborg (Dan), Louisburg, C. B.

Sid July 10: Strs Kelvinbrae, Brair, New Orleans; Wladimir Sawia (Dan), Wittenkamp, Quebec.

London, July 11—Sid: Strs Archne, Sergeant, Montreal; Messina, Anderson, St. John, N. B.

Bristol, July 11—Ard: Str Exeter City, Macdonald, New York.

Sid July 11: Str Bifrost (Sw) Sydne, C. B.

FOREIGN PORTS.

Perth Amboy, N. J., July 12—Ard: Strs Farmand (Nor), Havana; Schs H R Silver, New York (and all for Campbellton, N. B.); Albertha, New York; Beatrice L. Corkum, do; B B Hardwick, do.

Sabine, Tex, July 8—Sid: Sch E A Sabean, Kingston.

Baltimore, July 13—Ard: Strs Orithia, Morris, St. John.

Bridgeport, Ct, July 12—Sid: Sch Laura C Hall, New York.

New York, July 12—Ard: Schs Jes-

CLOSING LETTER OF N.Y. MARKET BY E. & C. RANDOLPH

(McDougall & Cowans.)

New York, July 14.—After a strong and active forenoon the market became dull at midday and continued in that condition until the close. In the late trading stocks developed a sagging tendency and the market's position seemed to be weakened on account of the elimination of the short interest on the recent advance. There were renewed reports of serious damage to spring wheat from black rust but although they caused a sharp advance in grain prices they did not seriously effect the market in the stocks. Attorney-General Gerrard made the statement that the corporations are now showing greater earnestness in their efforts to comply with the anti-trust law than was formerly the case, and that the Department of Justice is now seldom called upon to investigate complaints of violations of that statute. It is interesting to observe that although the decision in favor of the Steel Corporation in the anti-trust suit was rendered on June 3rd, an appeal has not yet been taken although the time for entering one will expire on August 3rd. Advances in the price of plates, bars and structural material have been announced by the steel manufacturers, and the buying movement in steel products shows no sign of slackening. Total sales 472,000. Bonds \$2,395,000.

E. & C. RANDOLPH & CO.

PRODUCE PRICES ON MONTREAL MARKET

	High	Low	Close
Wheat	116	119	115 1/2
Sept	109 1/4	104	109 3/4
Dec	112 1/2	106	112

INTERNATIONAL LINE.

Steamships Calvin Austin, Gov. Dingley and Gov. Cobb.

Coastwise—Leave St. John, Mon, Wed, and Fri, at 9 a.m. for Lunenburg, Portland, Boston and New York.

Leave Central wharf, Boston, Mon, Wed, and Fri, at 3 a.m.

Direct—Leave St. John, Tues, Fri, and Sat, at 1 p.m. Return leave Central wharf, Boston, Mon, Thurs, and Sun, at 10:00 a.m.

METROPOLITAN LINE

Steamships Bunker Hill and Massachusetts.

Leave North Side of India Wharf, Boston, every day at 5 p.m., due New York at 8 a.m. Same service returning.

MAINE STEAMSHIP LINE.

Steamships North Land and North Star.

Leave Franklin Wharf, Portland, Tues, Thurs, and Sat, at 6:30 p.m., also Mon, at 10:30 a.m. for New York.

City Ticket Office, 47 King Street, A. C. CURRIE, Agent, St. John, N. B.

A. E. FLEMING, T. F. & P. A., St. John, N. B.

LONDON GUARANTEE AND ACCIDENT CO. LTD.

Assets in England £5,551,660

Reserve £197,880

Assets in Canada £45,124.79

Automobile Insurance; Fire Policy; Employees Liability; Contractors Insurance; Accident Sickness and Guarantee.

CHAS. A. MACDONALD & SON, Provincial Agents.

FIRE INSURANCE

We represent first-class British, Canadian and American tariff offices with combined assets of over One Hundred and Sixty Million Dollars.

C. E. L. JARVIS & SONS, 74 Prince Wm. St.

THOMAS BELL & CO., St. John, N. B.

PUBLIC BUILDING, 45 PRINCE STREET

Lumber and General Brokers

SPRUCE, HEMLOCK, BIRCH, SOUTHERN PINE, OAK, CYPRESS, SPRUCE PILING AND CREOSOTED PILING.

Western Assurance Co.

INCORPORATED 1851.

Assets, \$3,213,438.28

R. W. W. FRINK - - BRANCH MANAGER

ST. JOHN, N. B.

Never Bites

This is one of the Best Features of

BROWN'S

FOUR CROWN

SCOTCH

It never bites—Every user of Scotch knows what that means.

One taste will convince you that it is the peer of them all.

FOSTER & COMPANY - ST. JOHN

Agents for New Brunswick.

STEAM BOILERS

We have on hand, and offer for sale the following new boilers built for a safe working pressure of one hundred and twenty-five pounds:

One "Inclined" Type 50 H. P.

One Return Tubular Type 60 H. P.

One Locomotive Type 20 H. P.

Two Vertical Type 30 H. P.

Full particulars and prices will be mailed upon request.

I. MATHESON & COMPANY, LTD.

BOILER MAKERS

NEW GLASGOW, NOVA SCOTIA

MONTREAL MARKET

	Bid.	Ask.
Canadian L. H. and P.	61 1/4	61 1/2
Canada Car	61 1/4	61 1/2
Canada Cement	61 1/4	61 1/2
Crown Reserve	48	50
Detroit United	62	62 1/2
Dom. Iron Com.	30 1/4	30 1/2
Mt. L. H. and Power	214 1/4	215 1/4
N. Scotia Steel and C.	60	60 1/2
Ottawa L. and P.	120	120 1/2
Sher. Williams Com.	3 1/4	3 1/2
Spanish River Com.	111	111 1/2
Toronto Ralle	111	111 1/2
Winnipeg Elect.	180	180 1/2

STEAMSHIPS.

FURNESS LINE

From London

From St. John

July 11—Messina

July 18—Appennine

WM. THOMSON & CO., Agents.

Crystal Stream Steamship Co.

ST. JOHN-FREDERICTON ROUTE.

The steamer D. J. PURDY will sail from North end for Fredericton and intermediate points every MONDAY, WEDNESDAY and FRIDAY, at 8:30 a.m., returning ALTERNATE DAYS, leaving Fredericton 7:30 a.m.

The "D. J. Purdy" and "Majestic" can be chartered at any time for excursions and parties.

ST. JOHN-WASHBURN ROUTE

The steamer "MAJESTIC" will sail from North end for Cole's Island and intermediate points every TUESDAY, THURSDAY and SATURDAY at 10 a.m., returning alternate days, leaving Cole's Island at 4 a.m.

D. J. PURDY, Manager.

Warehouse No. 204.

Eastern Steamship Lines.

All-the-Way-by-Water.

INTERNATIONAL LINE.

Steamships Calvin Austin, Gov. Dingley and Gov. Cobb.

Coastwise—Leave St. John, Mon, Wed, and Fri, at 9 a.m. for Lunenburg, Portland, Boston and New York.

Leave Central wharf, Boston, Mon, Wed, and Fri, at 3 a.m.

Direct—Leave St. John, Tues, Fri, and Sat, at 1 p.m. Return leave Central wharf, Boston, Mon, Thurs, and Sun, at 10:00 a.m.

METROPOLITAN LINE

Steamships Bunker Hill and Massachusetts.