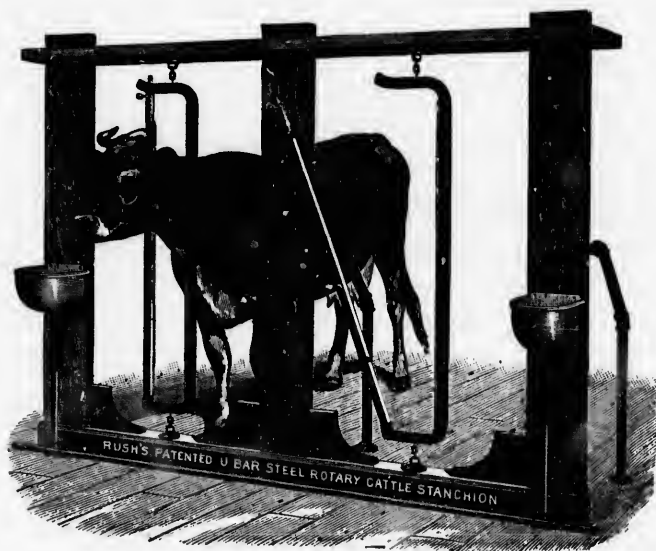
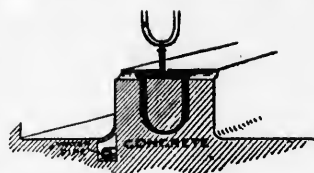
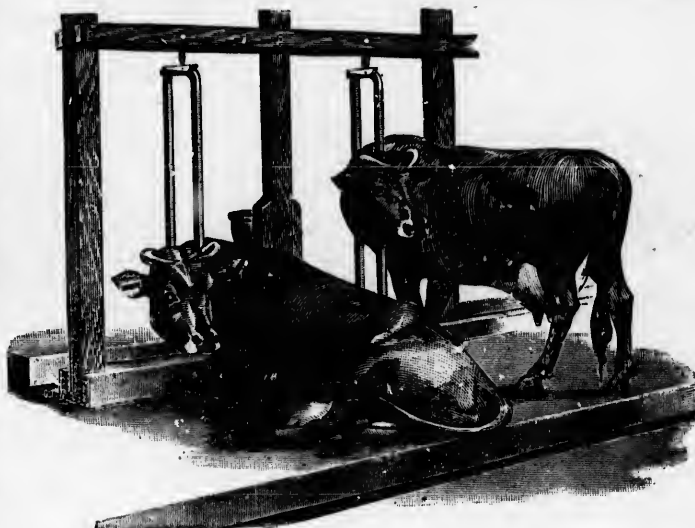


Stable Fixtures

Accompanying cut illustrates general arrangement of cement floors and wooden frame work to support Stanchions and Bowls and suggests the freedom enjoyed by animals when fastened with our Stanchions, as they can turn their heads in any way whether lying or standing.

The lower cut is an old one, but it illustrates a pipe partition which is approved by some dairymen. These partitions can be put in at any time, but is advisable when putting down cement floors to make provision for fastening. We will be pleased to give full particulars in reference to these pipe partitions upon application.



Above cut illustrates a good method of fastening Stanchion to cement work. A piece of iron 5-16 x 1 1-2 inch or heavier is formed into a U shape about three inches wide and four inches deep with bolt passing through holes in both ends and placed in cement work as illustrated in cut.

Cut also shows proper location for water pipes leading to bowls. When putting down cement work leave opening for pipe, and when pipe is put in place. It is an easy matter to bridge over pipe with cement.

THE METAL SHINGLE & SIDING CO.,
LIMITED

PRESTON, - ONTARIO.