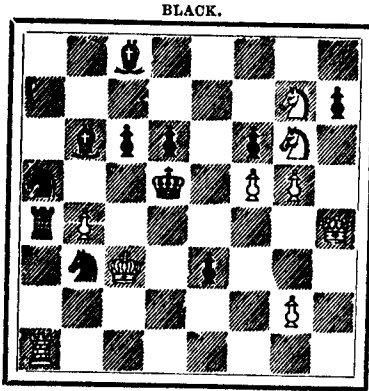


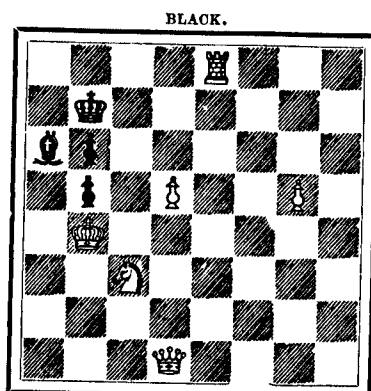
CHESS.

PROBLEM No. 285.  
By H. FRAU, of Lyons.  
From *Le Monde Illustré*.



White to play and mate in three moves.

PROBLEM No. 286.  
From *Illustrative Zeitung*.



White to play and mate in three moves.

SOLUTIONS TO PROBLEMS.

- No. 279.
- |            |           |
|------------|-----------|
| White.     | Black.    |
| 1. Q-R 8   | 1. P-Kt 6 |
| 2. Q-Kt 2  | 2. moves  |
| 3. Q mates |           |
- If 1. P-K 5  
2. Q-R 3  
3. Q mates  
With other variations.

- No. 280.
- |              |          |
|--------------|----------|
| White.       | Black.   |
| 1. Q-K Kt 1  | 1. P-K 5 |
| 2. Q-K R 1 + | 2. moves |
| 3. Q mates   |          |
- With other variations.

GAME PLAYED AT THE TORONTO CHESS CLUB BETWEEN MESSRS. SIMS AND BOULTBEE.

PETROFF'S DEFENCE.

- | SIMS.           | BOULTBEE. |
|-----------------|-----------|
| White.          | Black.    |
| 1. P-K 4        | P-K 4     |
| 2. Kt-K B 3     | Kt-K B 3  |
| 3. Kt x P       | P-Q 3     |
| 4. Kt-K B 3     | Kt x P    |
| 5. P-Q 3        | Kt-K B 3  |
| 6. B-K Kt 5     | B-K 2     |
| 7. Q-K 2        | Castles   |
| 8. Kt-B 3       | R-K 1     |
| 9. Castles      | Kt-Q 4    |
| 10. B x B       | R x B     |
| 11. Kt-K 4 (a)  | P-K B 4   |
| 12. K Kt-K Kt 5 | P x Kt    |
| 13. Kt x K R P  | K x Kt    |
| 14. Q-R 5 +     | K-Kt 1    |
| 15. Q x Kt +    | B-K 3     |
| 16. Q x K P     | B x Q R P |
| 17. Q x Q Kt P  | Kt-Q 2    |
| 18. P-Q Kt 3    | P-Q R 4   |
| 19. P-Q 4       | P-Q R 5   |
| 20. B-Q B 4 +   | K-K B 1   |

- | SIMS.         | BOULTBEE.    |
|---------------|--------------|
| White.        | Black.       |
| 21. Q-Q 5     | Kt-K B 3     |
| 22. Q-K B 3   | P x P        |
| 23. P x P     | Q-Q Kt 1     |
| 24. P-Q 5 (b) | R-K 5        |
| 25. Q-K R 3   | Q-Q Kt 5 (c) |
| 26. R-Q 3     | Q-R 6 +      |
| 27. K-B 2     | R-K 7 +      |
| 28. R-Q 2     | R x R        |
| 29. K x R     | Q-Kt 7 +     |
| 30. K-K 3     | R-K 1 +      |
| 31. K-B 3     | Q-B 6 +      |
| 32. K-B 4     | Q-K 4 + (d)  |
| 33. K-B 3     | Q-K 5 +      |
| 34. K-Kt 3    | B-Kt 8       |
| 35. B-Q Kt 5  | Q-K 4 +      |
| 36. P-B 4     | Q-K 6 +      |
| 37. K-R 4     | Q x P +      |
| 38. P-Kt 4    | Q-R 3 +      |
| 39. K-Kt 3    | R-K 6 +      |
- and White resigns.

NOTES.

- (a) Bad.  
(b) Not good, as it puts the B out of play.  
(c) R x B is the best move, as the game would be forced in nine moves, or Black would win the Q.  
(d) R-K 5 would win the Q in two moves.

ALMA LADIES COLLEGE, ST. THOMAS, ONT.—Three hours ride from Detroit or Buffalo. Full organized departments in Fine Arts, Music and Commercial Science with Graduating Courses. Diplomas and Certificates granted. The reputation of the School for efficient work is unsurpassed. The leading Canadian College for young women. For 66 pp. Calendar address, Principal Austin, B.D.

MR. J. B. GILDER'S concluding paper in the *Critic* on R. H. Stoddard contains an interesting account of the poet's literary curiosities, the chief of which is described as follows: "The most precious of all Mr. Stoddard's literary relics is a lock of light brown or golden hair—the veriest wisp—that came to him from his friend and brother poet, George H. Boker, of Philadelphia. Mr. Boker had it from Leigh Hunt's American editor, S. Adams Lee, to whom it was given by Hunt himself. It was 'the distinguished physician Dr. Beatty' who gave it to the English poet, and it was Hoole, the translator of Tasso, who gave it to Beatty. The next previous owner to Hoole was Dr. Samuel Johnson. Further back than this Leigh Hunt could not trace it, but he believed it to be a portion of the lock attached to a miniature portrait of Milton known to have existed in the time of Addison and supposed to have been in his possession. That it came from the august head of the poet of 'Paradise Lost' had never been doubted down to Dr. Beatty's day; so at least wrote Hunt in a manuscript of which Mr. Stoddard preserves a copy, in Lee's handwriting, in a volume of Hunt's poems edited by that gentleman. There is a fine sonnet of Hunt's on these golden threads, written when they passed into his possession, and Keat's poem, 'On Seeing a Lock of Milton's Hair,' has made the relic still more memorable. It is smaller now than it was when these great spirits were sojourning on earth, for Leigh Hunt gave a part of it to Mrs. Browning. 'Reverence these hairs, O, Americans! (as indeed you will,) he writes, 'for in them your great Republican harbinger on this side of the Atlantic appears, for the first time, actually and bodily present on the other side of it.' A companion locket holds a wisp of silver hairs from the head of Washington."

# BANFF SPRINGS HOTEL.

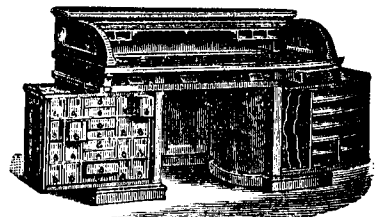
A perfectly constructed Summer and Winter Hotel, costing a quarter of a million dollars, situated on the line of the Canadian Pacific Railway, near the summit of the Rocky Mountains in the Canadian National Park.

The house is electric lighted and has every comfort and convenience found in city hotels of the highest grade. The numerous hot sulphur springs in close proximity vary in temperature from 80 to 121 degrees, and perfect bathing facilities are supplied. Testimony to the wonderful curative properties of the waters is plentiful. A first-class livery of driving and saddle horses forms part of the establishment, and there are excellent roads and walks in all directions, built and maintained by the Government. The house is 5,000 feet above sea level and is surrounded by magnificent mountain peaks 5,000 to 8,000 feet high. In grandeur of scenery and purity of atmosphere the region is immeasurably superior to any similar health resort on the continent. The hotel rates are from \$3.50 a day upward, and special terms for longer time may be had by addressing GEORGE HOLLIDAY, MANAGER, Banff, Alberta, Canada. For further information and for excursion tickets, apply to any Canadian Pacific Ry. Ticket Office, or at 110 King Street West, Toronto.

## W. STAHLSCHEMIDT & CO.

PRESTON, ONTARIO.

MANUFACTURERS OF  
Office, School, Church and Lodge  
FURNITURE.



Rotary Office Desk, No. 51.

SEND FOR CATALOGUE AND PRICE LIST.

## A WINTER IN SOUTHERN EUROPE

A party sails Dec. 29 for the South of FRANCE, ITALY, SICILY, and other delightful resorts. A Second Party for the HOLY LAND, GREECE, TURKEY, THE NILE, and the chief countries and cities of Europe, sails same date. Send for Circular. E. TOURJEE, Franklin Sq., Boston.

## COLEMAN Business

NEWARK, N. J. Open all the year. Best course of Business Training. Best Facilities. Pleasantest Location. Lowest Rates. Shortest Time. Most Highly Recommended. Write for Catalogue and be convinced. H. COLEMAN, President.

## FRENCH, GERMAN, SPANISH, ITALIAN.

You can, by ten weeks' study, master either of these languages sufficiently for every-day and business conversation, by DR. RICH. S. ROSENTHAL'S celebrated MEISTERSCHAFT SYSTEM. Terms \$5.00 for books of each language, with privilege of answers to all questions, and correction of exercises. Sample copy, Part I., 25 cents. Liberal terms to teachers. MEISTERSCHAFT PUBLISHING CO., BOSTON, MASS.

## THE STUDIO,

CLARENCE COOK, Managing Editor.

CONTENTS.

Leaders on Current Art Topics—Reviews of Art Exhibitions—Notices of New Statues, Paintings, Important New Buildings and New Art Books—Notes on Art Matters and Archaeology at Home and Abroad—Announcements of Art Exhibitions, Meetings of Art Schools, etc., etc.—Reproductions of Important Paintings by the Azuline and Orthochromatic Methods, giving full colour values—And in general whatever can be of interest and invaluable to Artists, Amateurs, Teachers, Instructors, Connoisseurs, Patrons and Lovers of Art, Architects, Builders, Sculptors, Decorators and Furnishers, Collectors of Antiquities, Vases, Coins and Medals, Art Classes, Clubs, Schools, Colleges, Libraries and Museums, and to every one interested in the Fine Arts.

### Announcement Extraordinary.

Our having commissioned so distinguished an etcher as Rajon to etch a plate expressly for THE STUDIO, has created considerable comment and speculation as to the nature of the subject. The inquiries for information continue to pour in from all over the country and abroad. The interest shown in this distinguished artist's etching has been so widespread, and as the subject will be of great importance, to create a sensation in this country and abroad when published, we have decided to print 600 India Proofs, before lettering, to be sold by subscription at \$5.00 each up to the day of publication, when the price will be increased. A magnificent work of art is promised. Copies of THE STUDIO, complete, with Rajon etching, 50 cents each. Books are now open to receive advance orders. Order now to secure one. The price for single numbers of THE STUDIO, complete, with all etchings, is 20 cents a copy, and can be supplied by all art, book, and newsdealers. Ask to see a copy. Address all communications to

THE STUDIO PUBLISHING CO.,  
3 EAST 14TH ST. NEW YORK.

## NEW ENGLAND CONSERVATORY

OF MUSIC, Boston, Mass.

The Largest and Best Equipped in the World—110 Instructors, 2252 Students last year. Thorough Instruction in Vocal and Instrumental Music, Piano and Organ Tuning, Fine Arts, Oratory, Literature, French, German and Italian Languages, English Branches, Gymnastics, etc. Tuition, \$5 to \$25; Board and room, with steam heat and electric light, \$5 to \$7.50 per week. Fall term begins Sept. 13, 1888. For illustrated Calendar, giving full information, address E. TOURJEE, Director, Franklin Square, Boston.

EVERYBODY  
READS  
**BIRTH, DEATH  
AND  
MARRIAGE**  
ANNOUNCEMENTS  
IN  
THE MAIL.

## SCIENCE (WEEKLY)

Reduced Price. Improved Form.

One Subscription, 1 year, \$3.50.  
Trial subscription, 4 mos., 1.00.

CLUB RATES (in one remittance):

One subscription, one year,	\$3 50
Two do do	6 00
Three do do	8 00
Four do do	10 00

Every one interested in Sanitary, Mental, Educational or Political Science, should read SCIENCE. Especial attention is given to Exploration and Travels, illustrated by maps made from the latest material by an assistant editor constantly employed on geographical matters.

### PRESS COMMENTS.

The value of this comprehensive scientific weekly to the student, the scientific worker, the manufacturer, and to the whole of that large and daily-growing class to which scientific knowledge is a necessity, can hardly be over-estimated. No student, business or professional man should be without it.—*Montreal Gazette*.

It is a scientific journal conducted with enterprise, impartiality and genuine ability.—*New York Tribune*.

We consider it the best educational journal published.—*Ottawa Globe*.

N. D. C. HODGES,

47 Lafayette Place, New York.

### TO SUBSCRIBERS!

Those wishing to keep their copies of THE WEEK in good condition, and have them on hand for reference, should use a Binder. We can send by mail

### A STRONG PLAIN BINDER

For 75 Cents. Postage prepaid. These Binders have been made expressly for THE WEEK, and are of the best manufacture. The papers can be placed in the Binder week by week, thus keeping the file complete. Address—

OFFICE OF THE WEEK,  
5 Jordan Street, Toronto.