

ceal the plumbing pipes.

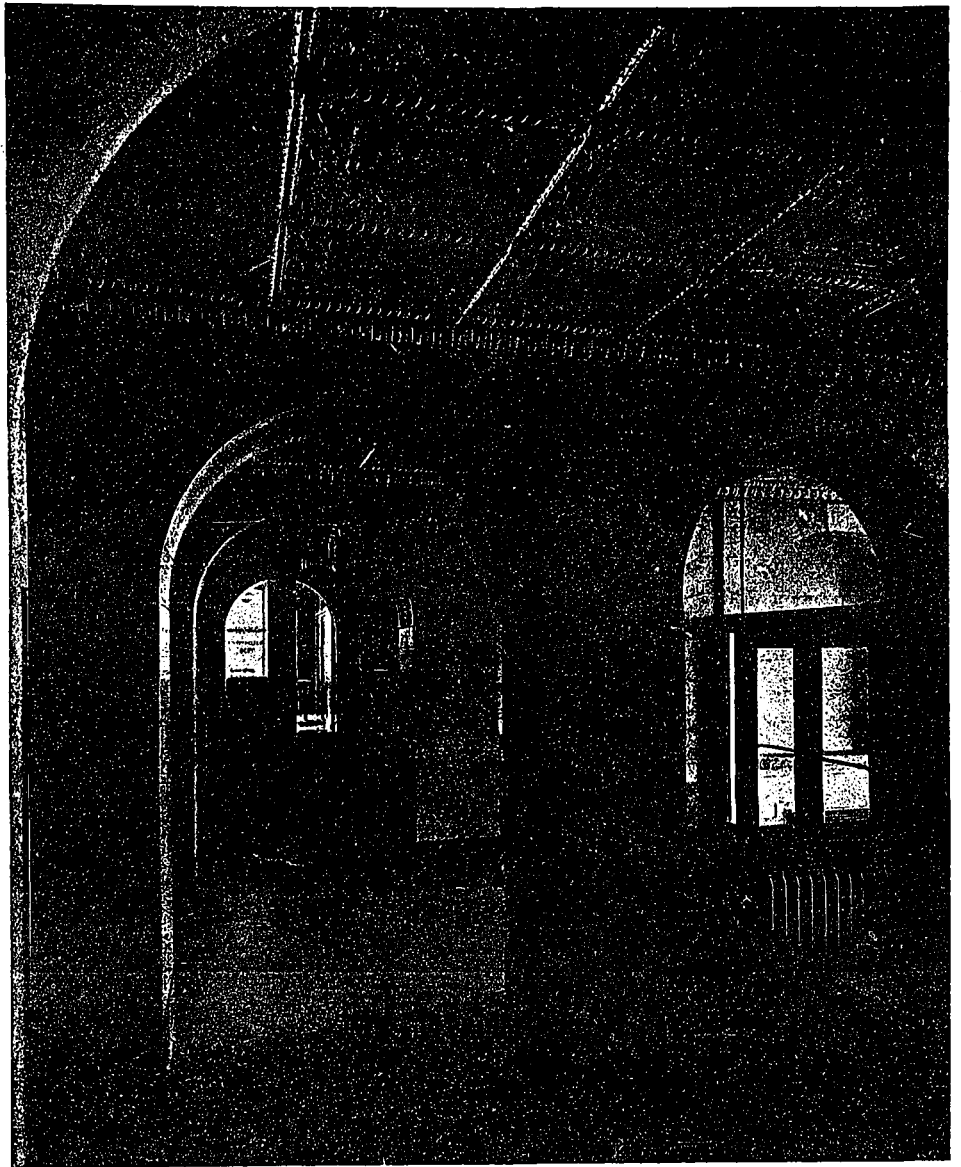
The appropriation and the times did not justify the erection of a monumental civic building, but the important position demanded a robust treatment on a large scale. This has been obtained by solid corners and a bold simple lower story with arched windows. Above this the order extends through four floors, terminating with an attic floor with small windows connected together by a simple moulding. Over the entrance a suitable sculpture group marks the centre of the building in a telling manner, and very happily contrasts with the simple lines of the building. Ornament has been but sparingly used and apart from the entrance consists of simple decorative work on the cornice, the top member of the architrave, and the panels between first floor windows. Depth and shadows are obtained on the south front by the use of three-quarter columns, while a pilaster treatment is used on the north, east and west sides.

The entrance hall has marble walls and floor with a decorative plaster ceiling. The Commissioners' room is finished in walnut with large matched panels and is Georgian in character. The chimney piece and carved table and chairs are of the same material, the latter having been designed by the architect in the style of the room.

The building is supported on wood piles driven to rock. The floors are of reinforced concrete and the partitions hollow tile. The exterior is in Indiana limestone.

The plans for the building were commenced by the firm of Chapman & McGiffin, and completed after the dissolution of the partnership by Mr. Alfred Chapman.

The harbor and waterfront improvements over which the Toronto Harbor Commissioners have control, as an undertaking of its kind, represents a scheme of surpassing magnitude. Together with certain improvements co-ordinated with the project which are being carried



ENTRANCE HALL, HARBOR COMMISSIONERS' BUILDING, TORONTO.

out by the Dominion Government, it involves the development of a waterfront industrial area, deep draft docking facilities, park and recreation reservations and extensive shore and breakwater developments.

Up to the present time 300 hundred acres of property have been reclaimed and made ready for factory and warehouse purposes, of which 160 acres are already under lease. This comprises the Ashbridge's Bay development where the large plant of the British Forgings is located, and the refilled property extending from the foot of Bathurst Street to a point a block east of Spadina Avenue, including the fifteen acre site now occupied by the Dominion Shipbuilding Company.

Approximately nine millions of dollars have been so far been expended by the Commissioners out of what will eventually represent an outlay of twenty-five millions. While the war was instrumental in retarding the harbor development to an extent which practically brought