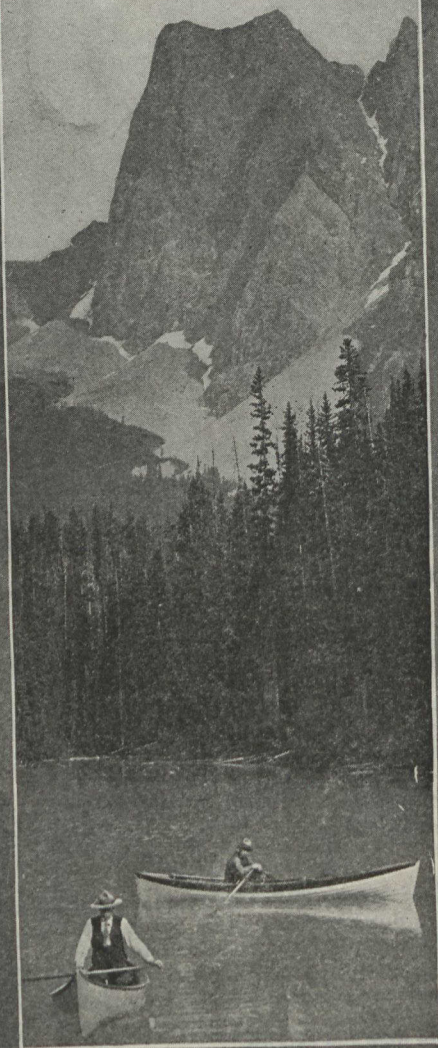


# 50 SWITZERLANDS IN ONE



## Emerald Lake.

One of the most exquisite gems of scenery on the American Continent. Situated near Field in the Canadian Rockies. Its waters are of an emerald hue, and the ever changing lights and shadows produced by the reflections from the surrounding mountains create rare and vivid pictures.



## Emerald Lake.

To see this marvellous lake is to view nature's loveliest handiwork. A Chalet is located at the Lake and from here can easily be reached the celebrated Yoho Valley.

Write for copy of  
"The Challenge of  
the Mountains."

EMERALD LAKE  
CANADIAN ROCKY MOUNTAINS.

Reached by the

# CANADIAN PACIFIC RAILWAY

ROBERT KERR, PASSENGER TRAFFIC MANAGER MONTREAL