

FIGURE No. 207 W.—MISSSES' SHIRT-WAIST.  
 FIGURE No. 207 W.—This illustrates a Misses' shirt-waist. The pattern, which is No. 9087 and costs 20 cents, is in 5 sizes for misses from 12 to 16 years of age, and may be seen again on this page.

The trim shirt-waist is here pictured made of figured lawn, with a white linen collar that may be sewed on or made removable, and sewed-on white linen cuffs. A fancy metal belt and silk tie are worn. An under arm gore at each side gives a smooth effect. Fullness in the fronts is gathered at the top and plaited at the waist at each side of the closing, which is made at the center through an applied box-plait. Tucks are taken up in the yoke both front and back, and box-plaits are formed in the back. The two-seam shirt sleeves are gathered at the top and tucked at the bottom. The turn-up cuffs are closed with link buttons.

close together at the waist-line by a side-plait under each side of the middle box-plait. The turn-down collar is made with a high band and may be sewed to the shirt-waist or made removable, the neck being finished with a shaped band when the collar is made removable. The two-seam sleeves are gathered at the top and each displays four vertical tucks; the openings at the wrists are finished with underlaps and pointed overlaps and the turn-up cuffs are sewed on.

Pattern No. 9087 is in 5 sizes for misses

from 12 to 16 years old. For a miss of 12 years, the shirt-waist, except the collar, needs  $4\frac{1}{4}$  yards of material 22 inches wide. The collar requires  $\frac{1}{2}$  yard 36 ins. wide. Price of pattern, 20 cents.

MISSSES' DRESS, CONSISTING OF A DUTCH WAIST AND A FOUR-GORED SKIRT.  
 No. 9082.—At figure No. 209 W on

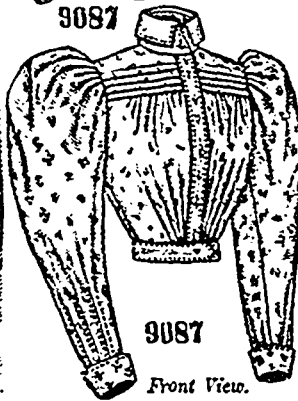
page 235, this dress may be again observed. The dress is here shown developed in light-blue China silk and white chiffon, with blue and



FIGURE No. 207 W.—This illustrates Misses' SHIRT-WAIST.—The pattern is No. 9087, price 20 cents.

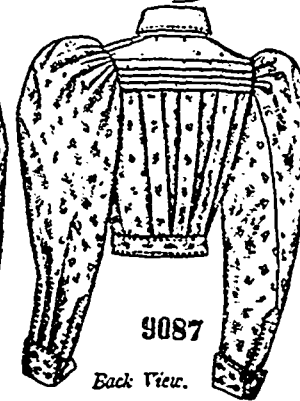


9087



9087

Front View.



9087

Back View.

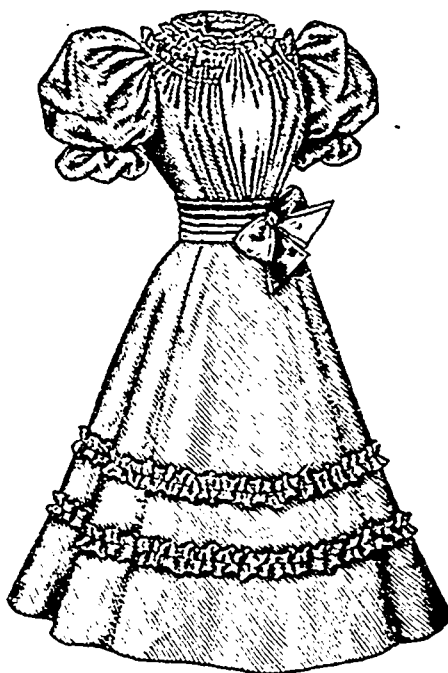
MISSSES' SHIRT-WAIST, WITH UNDER-ARM GORE, AND WITH A TURN-DOWN COLLAR (THAT MAY BE MADE REMOVABLE) AND TURN-UP CUFFS.

The hat is trimmed with ribbon and wings.

MISSSES' SHIRT-WAIST, WITH UNDER-ARM GORE, AND WITH A TURN-DOWN COLLAR (THAT MAY BE MADE REMOVABLE) AND TURN-UP CUFFS.

No. 9087.—This shirt-waist is also shown at figure No. 207 W on this page.

Figured dimity was here used for the waist. The upper part of the shirt-waist is a square yoke that is fitted by shoulder seams arranged over a smooth yokelining and formed in tucks at the bottom both back and front. Under-arm gores adjust the shirt waist smoothly at the sales and the fronts are gathered at the top, the fullness being arranged in plaits at the waist-line. A box-plait is applied at the front edge of the right front and through it the closing is made. Three box-plaits are formed in the back and are brought



9082

Front View.

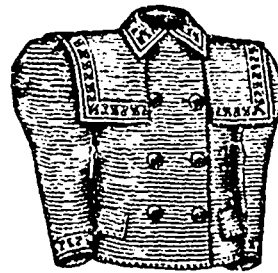


9082

Side-Back View.

MISSSES' DRESS, CONSISTING OF A DUTCH WAIST AND A FOUR-GORED SKIRT.

LITTLE GIRLS' REEFER JACKET.

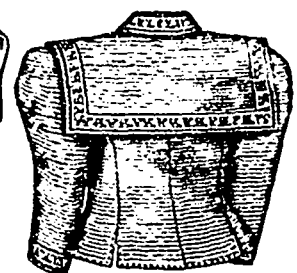


9059

Front View.



9059



9059

Back View.

white ribbon for the girdle. The Dutch waist is made over a well fitted lining, and is rendered smooth at the sides by under-arm gores. The full backs and side-fronts extend to round-yoke depth on the lining and are turned under at the top and shirred twice to form a frill heading, the fullness at the bottom being shirred at the center both back and front. Between the side-fronts is displayed a full center-front of chiffon that is extended to form a round yoke on the back and drawn all round at the top in shirrings. The waist is closed at the back. The short puff sleeves are arranged over fitted linings and are gathered at the upper and lower edges and a short distance above the lower edge to form a small and a large puff. Joined to the lower edge of the waist is a four-gored skirt that measures nearly two yards and seven-eighths round in the middle sizes and is gathered across the back. Ruchings of the silk decorate the skirt. The girdle is wide and laid in upturning folds and is closed at the left side of the front under a bow combining the two ribbons.

Pattern No. 9082 is in 7 sizes for misses from 10 to 16 years of age. For a miss of 12 years, the dress needs  $6\frac{1}{4}$  yards of blue China silk 20 inches wide, with  $\frac{1}{2}$  yard of white chiffon 45 inches wide, and  $\frac{3}{4}$  yard of blue and  $\frac{3}{4}$  yard of white ribbon each 5 inches wide. Price of pattern, 30 cents.

LITTLE GIRLS' REEFER JACKET.

No. 9059.—At figure No. 214 W on page 243 this jacket is again represented.

The jacket is here pictured made of blue pique, with insertion for decoration. The loose fronts are closed in double-breasted style and under-arm gores and a center seam fit the sides and back, the side-back seams being terminated a short distance from the lower edge. Pocket-laps cover openings to inserted side-pockets and a large sailor-collar and rolling collar are stylish features. The sailor collar has wide, quarter ends that reach to the bust at each side of the closing. The one-seam leg-o-mutton sleeves are gathered at the top.

Pattern No. 9059 is in 7 sizes for little girls from 2 to 8 years old. For a girl of 4 years, the jacket requires  $2\frac{1}{2}$  yards of goods 22 inches wide. Price of pattern, 20 cents.