

# Miners Wanted

TO CHEW

# PAY ROLL

Plug Tobacco

## WANTED.

At the several collieries of the Dominion coal co. Limited, skilled coal miners and mine laborers.

Apply on the works Or by letter

Dominion Coal Company, Ltd

## THE GARLOCK PACKING CO.



GARLOCK'S STEAM, WATER and AMMONIA  
—PACKINGS.—  
ASBESTOS SECTIONAL COVERINGS.

## Hamilton, Ontario.

Used by Collieries in Lancashire, Staffordshire & Yorkshire

### 'XTERRA'

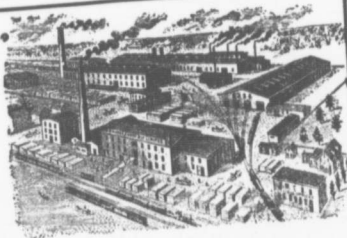
COLLIERY LAMP OIL

For Maraut, Muselle Deflector or Closed Lamp

LOW PRICE

PURE WHITE FLAME  
E. WOLASTON, Dutton St MANCHESTER

Sole Representatives for Canada, AUSTEN BROS.,  
Hifax, N. S.



—MANUFACTURERS OF—

RAILWAY  
STREET and  
MINING

## CARS,

CAR WHEELS  
FORGINGS &  
CASTINGS

Church Pews,  
Fittings for Stores, Schools, &  
A SPECIALTY.

Large Stocks of Foreign and Domestic Lumber on Sale.

Rhodes,

BUILDING MATERIALS  
GENERAL

Curry & co., Ltd.

Branch ROBBIE STREET,  
HALIFAX, N. S.

AMHERST, N. S.

## INTERCOLONIAL RAILWAY

On and after Sunday, Oct. 14th 1906 trains  
run daily, (Sunday excepted,) as follows—

—TRAINS LEAVE STELLARTON—		
No 144 Mixed for Hopewell	.....	5.55
No 79 Mixed for Trenton	.....	6.30
18 Express for Halifax, and St. John	.....	7.45
21 Mixed for Pictou Landing	.....	7.45
62 Mixed for Pictou	.....	8.30
58 Mixed for Mulgrave	.....	11.15
19 Express for Sydney	.....	12.55
28 Mixed for Trenton	.....	17.05
86 Mixed for Sydney	.....	18.45
26 Express for Halifax and Montreal	.....	18.50
30 Express for Pictou	.....	18.50
160 Mixed for Pictou Landing	.....	18.50
65 Mixed for Hopewell	.....	19.30
22 Mixed for Pictou	.....	19.30
86 Express Halifax and St. John	.....	21.30
17 Express for Pictou	.....	21.40

—TRAINS ARRIVE AT STELLARTON		
79 Mixed from Hopewell	.....	6.50
78 Mixed from Trenton	.....	7.30
61 Express from Pictou	.....	7.35
18 Express from New Glasgow	.....	7.35
21 Mixed from Hopewell	.....	8.05
62 Mixed from Pictou	.....	10.55
26 Express from New Glasgow	.....	10.55
27 Mixed from Pictou	.....	11.00
58 Mixed from Mulgrave	.....	12.30
19 Express from Halifax and St. John	.....	17.00
189 Express from Halifax, St. John, Quebec	.....	18.45
86 Express from Sydney	.....	18.50
21 Mixed from Pictou Landing	.....	18.50
22 Mixed from Hopewell	.....	19.35
86 Express from Pictou	.....	19.35
17 Mixed from Hopewell	.....	19.40
65 Express from New Glasgow	.....	21.35
86 Express from Halifax and Pictou	.....	21.35
17 Express from St. John and Halifax	.....	21.35

All trains run on by Atlantic Standard time Treaty zone  
Clock is mid-night, Moncton, N. B. June 30th, 1906