

SPARKS.

The Brantford Electric Light and Power Company have several times of late suffered damage by reason of floods. On the 6th of March, part of their embankment was carried away, and for a time the total destruction of their plant appeared to be imminent.

Application is being made for incorporation by the T. W. Ness Electric Company, of Montreal. The applicants are Messrs. T. W. Ness, T. H. Davidson, J. L. Rankin, J. E. Adams and M. W. McLaren. The capital stock of the company is to be \$150,000.

The shareholders of the Montreal Street Railway Company have resolved to increase the capital stock of the company from \$2,000,000 to \$4,000,000 and have empowered the directors to issue new bonds for this purpose at such times and in such amounts as they may see fit.

Messrs. A. A. Wright & Company's electric lighting station at Renfrew, Ont., is said to be one of the best arranged and kept in Eastern Ontario, everything about the place being maintained in a condition of perfect cleanliness. The credit for this is largely due to Messrs. John Stuart, Wm. Wherry and Howard Wright, who are in charge of the station.

Messrs. Louis Cote, Paul Ryan, Jean Baptiste, Lalime, and Jean, T. Godbout, of St. Hyacinthe, Que., and Antoine M. Morin, of Paris, are applying for incorporation as "La Compagnie des Bouvoirs Hydrauliques de St. Hyacinthe." The object of the company is the production and sale of light, heat and motive power produced by electricity. The capital stock will be \$50,000. The gentlemen above named will be the first directors.

A company is being formed to utilize the Falls at Chateau Richer for the purpose of supplying electric light to that town and St. Anne de l'Empire.

A bill has passed the Ontario Legislature, which gives the London Street Railway Company a thirty three years' franchise over the streets of the village of London West.

The Bell Telephone Company will establish a new central station at St. Roch, a suburb of Quebec city, and have had plans prepared by the local manager, Mr. Dauphin, for a new building to be erected at the corner of Caron and Charest streets for the purpose.

At a special meeting of the shareholders of the Merchants' Telephone Company, of Montreal, the directors were authorized to dispose of the balance of the capital stock of the Company, amounting to \$20,000. It is stated by the President, Mr. F. X. Moisan, that the company has no intention of selling out to the Bell Company.

The Brockville Gas Light Company is applying to the Ontario Legislature for authority to change the name of the company to "The Brockville Light and Power Company, Limited," to increase the capital stock to \$250,000, and to make the charter of incorporation, which expires in nine years, perpetual.

Application will be made to the Dominion Parliament for an act to incorporate "The Dominion Gas and Electric Company," with headquarters at Winnipeg. The capital stock of the company will be \$1,000,000. This is said to be the first step toward the consolidation of the Winnipeg Street Railway and the Manitoba Gas and Electric Light Company.

HAWORTH BELTING CO.

MAKERS OF ALL THE WIDE DOUBLE LEATHER BELTS

Used in transmitting power for the

TORONTO, HAMILTON, BRANTFORD, KINGSTON, PETERBORO', WINNIPEG,
and VICTORIA, B. C.,

ELECTRIC RAILWAYS

OFFICE AND FACTORY: 9 AND 11 JORDAN STREET,

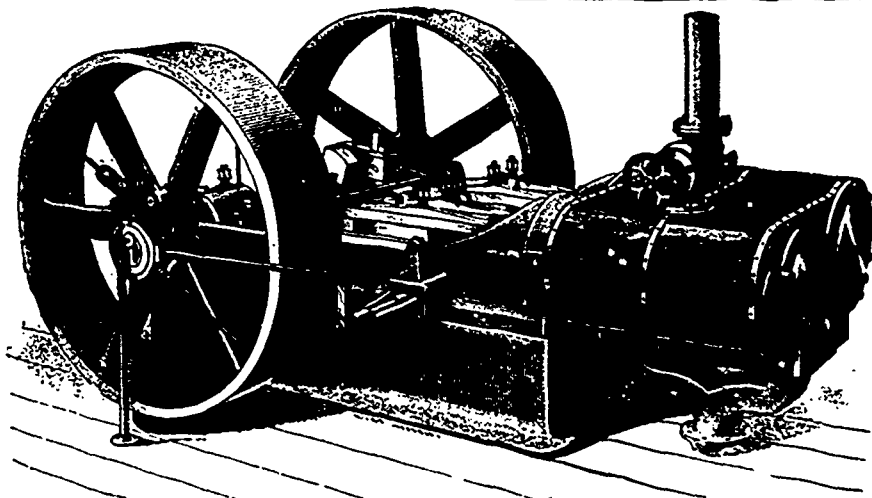
TORONTO

THE CANADIAN LOCOMOTIVE & ENGINE CO., Ltd.

KINGSTON, - ONTARIO.

MANUFACTURERS OF

Locomotive, Marine and Stationary Engines



ARMINGTON & SIMS' HIGH SPEED ENGINE FOR ELECTRIC LIGHT PLANT, ETC.

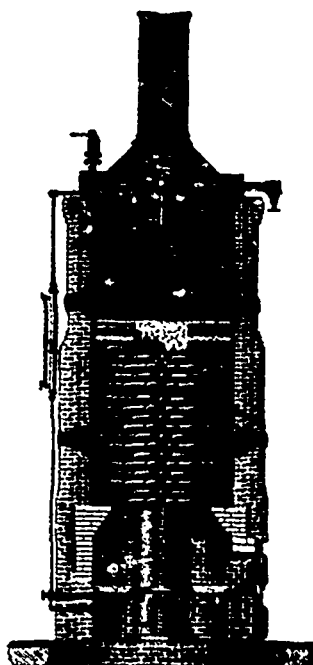
NOTICE.

The Canadian Locomotive & Engine Co., Limited, of Kingston, Ontario, have the exclusive license for building our Improved Patent High Speed Engine for the Dominion of Canada, and are furnished by us with drawings of our latest improvements.

PROVIDENCE, R. I., Nov. 18th, 1889.

(Signed)

ARMINGTON & SIMS.



THE
HAZLETON
BOILER.

The
Handiest,
Safest,
and
Most
Economical

Boiler.

"CYCLE" GAS ENGINE

IMPULSE EVERY REVOLUTION without
a separate pump. NO SLIDE.

Descriptive Catalogues of the above on application.