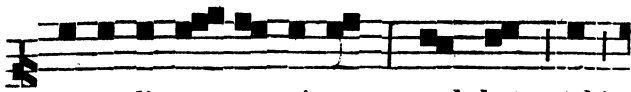
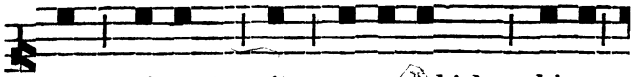
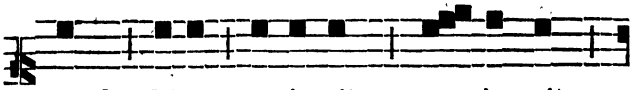


*Introit Nikamon.*

tua-ue-li-ma-ga-ni-pan, uesh-kats tshi



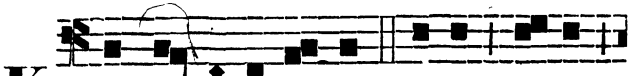
ma mi-nuats its a-no-tshish ki-e



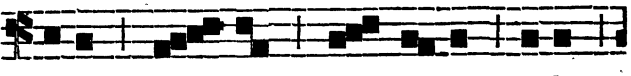
mush ki-e e-ia-pits e-ia-pits



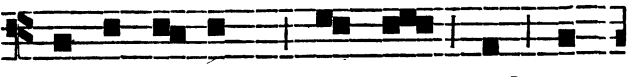
tshi ma its. Tshi ka, &c.

*Introit Nikamon.*

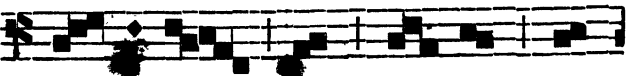
**K** Us-ta-ne li-ta-gon. O-te; e-ko



e-tat tshi-je ma-ni-to; e-ko



esh-kua-te-mots wash-ku; mak a-



ia-mi-e o tshi-wap i-