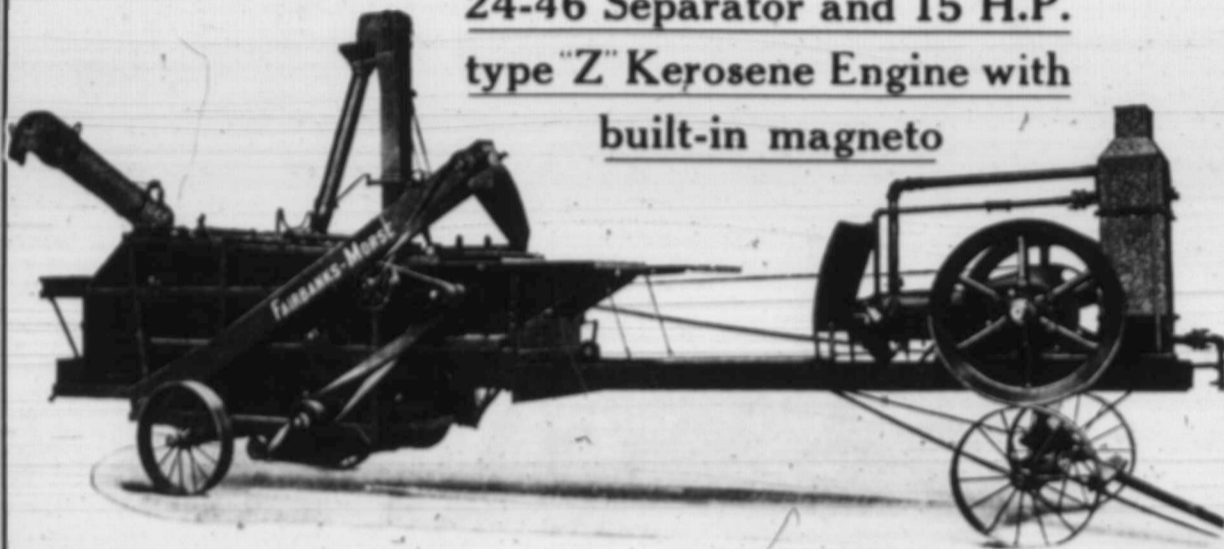


Here's the Outfit You Need

Thresh your own grain this year. Not only do you save time and money in doing this, but there is a deal of satisfaction in it, too. No need, either, to spend thousands of dollars on a rig - - You can now get a

Fairbanks-Morse

**24-46 Separator and 15 H.P.
type "Z" Kerosene Engine with
built-in magneto**



Let this sturdy machine help you solve your threshing problem. Its dependability is un-failing. It is easily operated, threshes fast and clean, and its strong construction guarantees a satisfactory and enduring service.

Our Free Catalogue

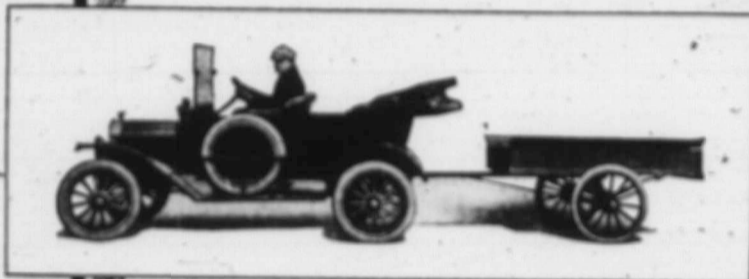
explains this machine in every detail, and it's mighty interesting reading too. A copy is yours for the asking.

The Canadian Fairbanks-Morse Company, Ltd.

SASKATOON WINNIPEG CALGARY

MONTREAL ST. JOHN OTTAWA
TORONTO VANCOUVER VICTORIA

IF YOU HAVE SOME SPARE TIME which you want to convert into dollars, write us and we will tell you how to do it.—Subscription Dept., Grain Growers' Guide, Winnipeg, Man.



Keep the Horses at Work in the Fields

No need to take the horses away from work on the farm—you can do your hauling to and from market, mill or store far quicker, easier, better in every way with a FOX Trailer.



The FOX Auto Trailer is made to attach to any make of automobile. It causes not the slightest injury to the car and can be driven easily and without any inconvenience. It is built in accordance with the best designs of expert automobile engineers; has steel chassis, direct draught from steel axle, ball-bearing automobile wheels, solid Dunlop tires, guaranteed for 10,000 miles. Size of body 6 feet by 4 feet. Write for descriptive catalogue.

ASK YOUR LOCAL AUTOMOBILE OR IMPLEMENT DEALER OR WRITE

FOX BROS. & CO. LIMITED
Windsor, Ont.

Auto tongue truck equipment on Deering and McCormick binders. Illustration shows position of tongue truck wheels when making a turn at end of swath. Note that wheels follow a natural circular track with the main wheel as a pivot. The binder turns squarely and easily with no tendency of wheels to drag or lift and with no twisting strain on binder pole.

Binder Details That Count

A BINDER will work with a main wheel 8 inches wide, but a 10-inch wheel gives the machine a better motion and makes it pull easier, therefore that extra 2 inches on the face is important. Deering and McCormick binders have main wheels 10 inches wide.

An inch or so added to the depth of a main wheel lug is a small thing unless it gives the machine needed tractive power; then it is a big thing. Compare the depth of lugs on our main wheels and on others.

Deering and McCormick auto tongue truck wheels have removable bushings equipped with hard oil cups, which save throwing away the whole wheel when the bearing is worn.

The canvases are loosened and tightened by the simple throwing of three levers, and are kept running true by an equalizer bar. This adds to the life of the canvases.

Buy Deering and McCormick binders—you can't do better. Your local agent will give you good service on the machines on sale. If you would like to have printed descriptions, write the nearest branch house.

International Harvester Company of Canada, Ltd.
BRANCH HOUSES
At Brandon, Calgary, Edmonton, Estevan, Hamilton, Lethbridge, London, Montreal, N. Battleford, Ottawa, Quebec, Regina, Saskatoon, St. John, Winnipeg, Yorkton