



Head Office GRESHAM BUILDING MONTREAL
302 ST. JAMES STREET
TRANSACTIONS:
PERSONAL ACCIDENT FIDELITY GUARANTEE
SICKNESS BURLARY
LIABILITY (ALL KINDS) LOSS OF MERCHANDISE AND
AUTOMOBILE PACKAGES THROUGH THE MAIL
Applications for direct Agencies invited
P. J. J. STARK, General Manager

NORWICH UNION Fire Insurance Society, Limited

Insurance against
FIRE, ACCIDENT AND SICKNESS,
EMPLOYERS' LIABILITY,
AUTOMOBILE, PLATE GLASS
Agents wanted for the Accident Branch.

Head Office for Canada Norwich Union Building
12-14 Wellington Street East, Toronto.
JOHN B. LAIDLAW MANAGER.

Certified Valuations

The Canadian Appraisal Company's certificate of plant values is recognized as authoritative in the highest financial circles.

Its appraisal is an expert detailed analysis which establishes quantities and values beyond question, and is based upon present cost of reproduction new with actual accrued depreciations.

The Canadian Appraisal Co., Limited

Head Office Montreal
Toronto Royal Bank Bldg.

British Colonial FIRE INSURANCE COMPANY

Royal Building, 2 Place d'Armes, Montreal.

STRONG AS THE
— STRONGEST —

Agents wanted in unrepresented districts
in Canada

AGENCY INVESTMENTS

THE INVESTMENT AGENCY RECEIPT
ISSUED BY THIS COMPANY COVERS INVESTMENTS IN
FIRST MORTGAGES ON REVENUE PRODUCING REAL
ESTATE.

MORTGAGES HELD BY THE COMPANY ARE RECORDED
ON ITS BOOKS, AS THE PROPERTY OF THE INVESTOR,
AND ARE ALSO PARTICULARLY SPECIFIED ON THE

INVESTMENT AGENCY RECEIPT
ISSUED FOR FIVE YEAR PERIODS.

AVERAGE YEARLY YIELD IS **6⁴/₅ %**
FULL INFORMATION ON REQUEST

THE IMPERIAL CANADIAN TRUST
COMPANY

HEAD OFFICE: WINNIPEG, MAN.
BRANCHES: SASKATOON, REGINA, EDMONTON, CALGARY,
VANCOUVER AND VICTORIA

The Great West Permanent Loan Company

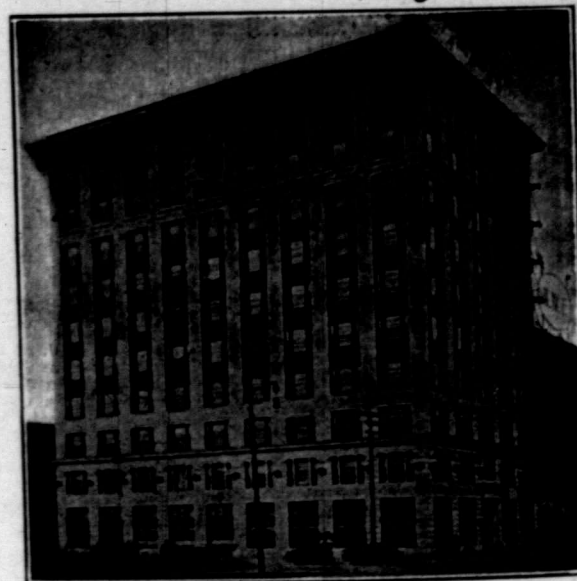
Paid-up Capital \$2,400,484.03
Reserve 678,840.67
Assets 7,100,546.11

5% DEBENTURES

An Authorized Investment for Trust Funds.
Ask for Booklet "About Debentures."

WINNIPEG, TORONTO, REGINA, CALGARY
EDMONTON, SASKATOON, VANCOUVER, VICTORIA
LONDON, ENG. EDINBURGH, SCOT.

REGINA



McCALLUM HILL BUILDING, REGINA

Debentures, Real Estate, Loans,
Fidelity Bonds, Insurance

McCallum Hill & Co.

REGINA, SASKATCHEWAN

References: R. G. Dun & Co. and Imperial Bank of Canada