

J-41-1 \* J-44-2

# The Journal of Commerce

MONTREAL, CANADA

VOL. XLVIII. No. 42

GARDENVALE, P. Que., OCTOBER 19, 1920

PRICE, 10 CENTS

## SHAWINIGAN

An Account of the Water and Power Company's Activities which have Resulted in Great Prosperity and Progress for the Enterprising Town

By A. R. R. JONES

It is the combination of natural beauty with utilitarian opportunities of the first magnitude that gives to the town of Shawinigan Falls much of its unique character. Few towns anywhere are endowed with such superb natural advantages. With the Maurice River (its channels divided by islands) flowing past the town, there is a contrast of hill and valley which, even in a province remarkable for the natural beauty of so many of its towns and villages, marks out Shawinigan as in a class by itself.

Last week mention was made in these columns of the fact that, little more than twenty years ago, the entire population of what is now a thriving, industrial centre lived in one house. The industrial expansion which resulted from the harnessing of the water of the indomitable St. Maurice river to the service of mankind was followed by a surprisingly rapid growth of the population. With the extraordinarily rapid growth of the town, it has been found necessary, from time to time, to extend the facilities of the Shawinigan Falls General Hospital, until today a modern hospital exists with ample capacity, and with a very complete equipment, for taking care of all casualties and other emergencies of a like nature that are likely to occur in the town. This hospital, it should be mentioned, is maintained by the Shawinigan Water and Power Company.

The spiritual needs of the community are well cared for. Either in the town itself, or within easy distance of it, there are four Catholic churches, one Anglican church, and one Union church, which is attended jointly by the Presbyterians, Methodists, Baptists and Congregationalists of the locality. There are large and efficient Catholic elementary schools at Shawinigan. In addition, the Shawinigan Water and Power Company, which acts the part of the good fairy of the district, so to speak, supports a model elementary school for the use of such children as do not attend the schools just mentioned. In any attempt to outline the principal features of the community life at Shawinigan, prominent mention must be made of the Technical Institute. This Institute, to which have been added shops for manual training, offers a means of education to the younger men calculated especially to fit them for the industries that are carried on locally. Mr. W. H. Meddick is at the head of this undertaking which is proving of high value to the youth of the place.

### Housing and Social Activities.

Very early in its development the Shawinigan Water and Power Company built a hotel at the Falls, mainly as a residence for some of its own officers and other members of its staff. This hotel, known as the Cascade Inn, has been extended, as time has gone

on, and has proven to be the centre of considerable social activities at Shawinigan Falls. Another social centre is the Country Club at St. Onge. This club, which has a membership of about a hundred and fifty, has four tennis courts. It will shortly be able to boast of a bowling green and a toboggan slide. A dance is held there every Tuesday.

North West of the town, and bordering on Little Shawinigan river, there is a large tract of land most of which is owned by the Shawinigan Water and Power Company. This is to form the site of what is being already spoken of as the new town, and on it some two thousand houses will possibly be built. Parks and recreation grounds will be laid out there. For the idea is to make a community section of this part of the town. "In ten years' time," said to the writer one whose knowledge of Shawinigan, and whose capacity for estimating its possibilities are alike unrivalled, "the town will have a population of twenty-five thousand people".

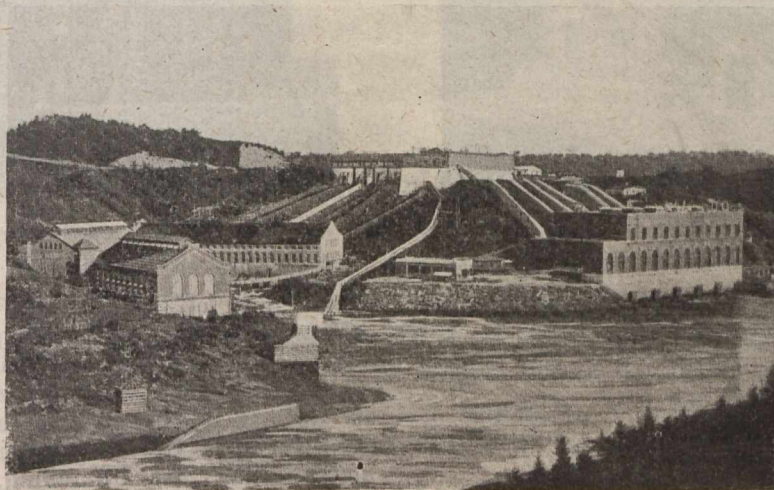
It should be added that a considerable improvement and benefit to the St. Maurice Valley district is the new motor highway connecting Three Rivers with Shawinigan Falls and Grand Mere. No doubt, this new highway will prove a great inducement to outsiders to visit Shawinigan Falls with its industrial advantages and scenic attractions. The community, it may be noted, is evincing a very keen and healthy interest in municipal affairs. Under the leadership of Mayor Dufresne, a highly progressive policy has been adopted.

### Outcome of Power Development.

Of course, the town of Shawinigan Falls, with its admirably arranged residential and industrial sections, is the direct outcome of the power development. Its growth dates from the incorporation of the Shawinigan Water and Power Company which has shown undeniable prescience, and judgment of the highest order, in watching over its interests and in shaping its destinies. And, while making mention of this company the writer would like to take this opportunity of thanking so many of its officials for the assistance they so freely accorded him in his project of making a tour of the St. Maurice Valley district. Not only did they give him the fullest information with regard to the industries with which their own Com-

pany is specially concerned, but they also went to considerable trouble to procure for him an entrance to many other industrial plants in the district. In particular, his thanks are due to Mr. R. J. Beaumont, general manager of the subsidiary distributing companies; Mr. F. T. Kaelin, the chief engineer; Mr. H. Dessaulles, the local agent at Shawinigan Falls; and Mr. R. H. Mather, of the engineering department, who is stationed at Three Rivers.

The Shawinigan Water and Power Company was organized in 1898 with the object of making use of the energy of the Shawinigan Falls. The next year the power development was started by building the canal and power house containing the first two units of 5000 horsepower. At this time the Company started to furnish hydraulic power to the first two industries located at Shawinigan, namely, the Northern Aluminum Company and the Belgo Canadian Pulp and Paper Company. These two concerns used about 15,000 horsepower.



General view of Power-Houses Nos. 1 & 2 at Shawinigan Falls.