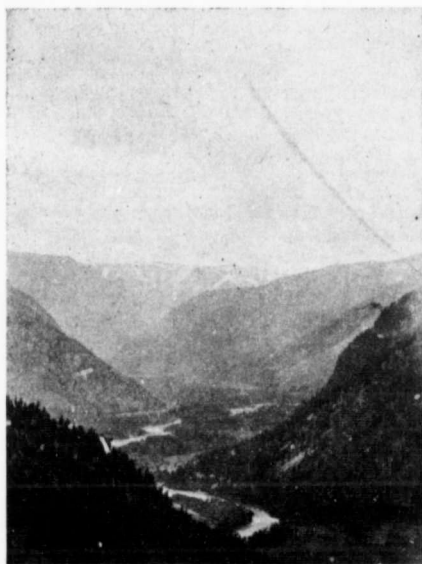


similar ore has been exposed, associated with quartz and lying conformably with the stratification. These arsenical deposits lie in a lime formation and carry their gold, partly the major part, as free and partly associated. In some cases porphyry is intimately mixed with

creek, at a distance of one mile from Hedley, and an altitude of 1,000 feet above it, is the Kingston mine which is under bond to F. M. Wills, of Republic, and is owned by P. Scott. The ore consists of copper pyrites and a 70-foot tunnel has been driven into the ledge



LOOKING DOWN THE SIMILKAMEEN FROM CAMP HEDLEY.



SIMILKAMEEN VALLEY AT HEDLEY.

the pyrites and in such cases this porphyry is itself a carrier of the precious metal. This lime belt is bounded by granite on the west and north and quartzite on the east.

(3). [a]. *Copper on the Lower Similkameen.*—On Shuswap creek an ore consisting of quartz carrying high

on solid ore. There are showings of equal promise on the Toronto and Galena groups adjoining the Kingston, and mention could be made of a number of other claims but as this article is intended to give a general description I must withhold them.

[c]. *Copper of the Upper Similkameen.*—The copper



HOTEL HEDLEY, HEDLEY CITY.



NICKEL PLATE MINE.

grade copper pyrites is to be seen on the King Edward claim. This ore carries varying quantities molybdenite. At Olalla the Keremeos Mining syndicate have, for the past three years, been working steadily on their property.

[b]. *Copper of the Middle Similkameen.*—At 20-mile

ore in this section may be put down as bornite, though a number of claims show pyrites as the predominant variety. This bornite occurs on Copper and Kennedy mountains and Friday creek, in a matrix of diorite. The deposits are of considerable extent and development should show some valuable properties.