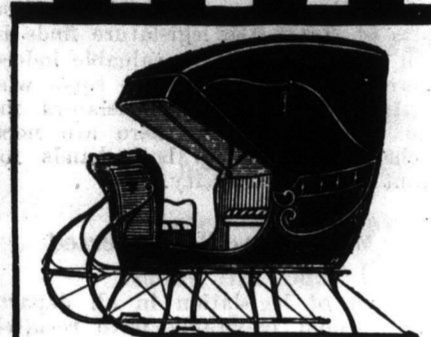


## Tell your Dealer you want to know about the Gray Sleigh



**No. 34—Winnipeg Special**

This is a gentleman's road sleigh, is built strong, natty and roomy and allows the horse to be hitched close without striking and runs level over crossings and rough, uneven grounds. Painted body black and gearing carmine or green—cloth trimming. It is a splendid sleigh for speeding.



**No. 36—Covered Kenora Beauty**

The Kenora Beauty is a fine, commodious, covered sleigh with plenty of leg room in front. Built with high side panels and an especially high back, it is painted in black, walnut or mahogany with the gear in carmine or green. It is constructed on its merits in every particular.



**No. 76 1/2—Tecumseh Belle**

No effort has been spared to make this the most popular and comfortable sleigh on the market. This cutter is one of our best styles and is to be strongly recommended to our patrons. It is built low down and strongly braced and is equipped with an especially high back with a deep and wide seat and high sides. It has channel shoes and nickel arm rails and line rail.

### GRAY SLEIGHS

like Gray Carriages, are built from robust, full-grown woods, properly seasoned. They are constructed for actual service on all kinds of roads. The finish of Gray Sleighs is a feature to which attention can hardly be too strongly drawn. In some cases as many as from twelve to twenty-four coats of the finest leads, colors and varnish are applied. Between each the work is rubbed smooth and flat with pumice and fine sand-paper, the final polish being attained in some instances by rubbing with the palm of the hand. With this care properly appreciated, it is easy to comprehend why Gray Sleighs are not excelled for honest workmanship, graceful lines and beautiful finish.



*Robert Gray*

**T**ELL him you want to know why Gray Sleighs are *different*—and if he doesn't sell them and doesn't know, tell us. We will tell you.

¶ Let your dealer know that *this* time you intend to buy a sleigh on a common sense basis. Let him know that *this* time you mean to get your money's worth and that you are going to have it.

¶ Then if you find that you cannot get the facts as you would like to have them, in your own town, write me personally telling me what you want and I will give you the full particulars in detail.

¶ I have some facts to give you—some real facts—facts that you ought to know before you buy a sleigh—even whether it is my sleigh you buy or not.

¶ And I want to give you these facts.

### For You WANT To Know

¶ I am really anxious that before you buy, you should have at your finger ends every detail of the sturdy material and careful construction of Gray Sleighs, so when you go to your dealer you can give him something to think over.

¶ All I want to do is to put the bare facts before you—the facts that you owe it to yourself to know—and then I am perfectly willing to leave the rest—the decision—to your own common sense and good judgment.

¶ Merely write my nearest office. By return mail, you will get the whole story with all the information about our specially low freight rates and prompt deliveries.

¶ Don't put it off—write to me to-day—now.

#### NOTICE TO DEALERS

We want dealers to handle our products wherever we are not already represented, and offer exclusive privileges in each place. We are running a large advertising campaign and all orders received by us direct are referred to the dealer from whose territory they come. If you are not selling our products, write us for territory and terms.

## GRAY-CAMPBELL Ltd. of Moosejaw

Western Canada Sales Agents for The Wm. Gray & Sons Co. Ltd. and The Manson Campbell Co. Ltd. of Chatham, Ontario  
Distributing Warehouses at — BRANDON SASKATOON CALGARY WINNIPEG MOOSEJAW

## Makes Kitchen Work Easy And Pays For Itself Too

### Look at it in the Picture

### Saves Room and Time

Getting dinner—or any meal—takes only half as long when you have this Cabinet in your kitchen. Everything is so handy that cookery is a pleasure instead of drudgery. There's far less mess to clean up afterward—it's so easy to keep the kitchen tidy—and the cook saves so many steps. Compact, sensible, and work-saving.

Take and try it in your kitchen,—see the work it does away with, the time it saves, the bother it puts an end to—see how sensibly planned, how excellently built, how well worth its small cost it actually is. Indeed, you will be well satisfied if you buy a Chatham Kitchen Cabinet. It is a most practical convenience.

### Take it on trial—Pay for it a little at a time

#### Let Me Send You One On Trial

You can pay for the Chatham Kitchen Cabinet a little at a time,—stretch the payments over many months—so it buys itself while you use it. After it has been a week in your kitchen you will wonder how you ever got on without it. This Cabinet actually is, and I GUARANTEE it to be, better, more compact and more labor-saving in design than any other made. It costs less. It is more complete, more convenient, built better—a great deal better. The wood-work is the finest selected Canadian chestnut, beautifully finished in rich, lustrous golden-brown. The bakeboards, drawers, flour-bin, are snow-white basswood—the shelves, hard, clean maple—knobs, handles, catches, heavy red copper—every part the best material money can buy.

### Get My Long-Credit Offer

The drop-leaves (they'll hold a heavy man's weight) just double the table top's area. Nothing is in the way,—nothing opens on the table's level. The whole top is polished metal,—sanitary, clean, water-proof. All the fronts of drawers, doors and bins overlap,—that makes them dust-proof, fly-proof, CLEAN. All the inside parts are finished satin-smooth,—not a crevice nor a seam to harbor dirt or insects. The flour-bin (that compartment lowest down) holds 75 pounds, has a curved solid-metal bottom, and glides in and out at a touch, on double roller ball-bearings. Every drawer shuts TIGHT, but never can stick. Every bin slides in and out EASILY. The whole Cabinet is mouse-proof.



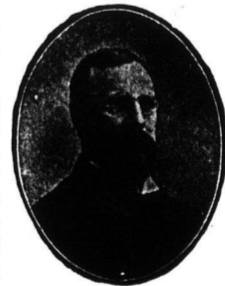
Saves 500 Steps a Day in any Kitchen

## The Chatham Kitchen Cabinet

Saves endless bother and clutter

### It's Very Practical

It couldn't be made more complete. Large enclosed closets for heavy utensils; plenty of shelves; shelf rack; two big drawers—17 1/2 ins. wide, 5 inches deep; three small drawers; three cupboards; two big bins—self-moving; the whole thing 6 feet high, and mounted on double-acting rotary castors—easy to move around. Top is made of extra-heavy, polished zinc that will wear for years and be easy to keep clean all the while. Six aluminized canisters supplied free with Cabinet.



MANSON CAMPBELL  
President

### Fully Guaranteed

There are no out-of-the-way cubby-holes around a Chatham Kitchen Cabinet; but there IS a handy, easy-to-get-at place for everything that is used in getting a meal ready,—flour, sugar, salt, coffee, tea, spices, package food supplies, knives, spoons, kettles, bread-pans, etc., etc. Let me send you a book that illustrates and describes the Cabinet; or send me your order for it on trial, with my special credit terms and a guarantee that you will be wholly satisfied with it.

Temporary Offices:  
500 Jessie Ave., Winnipeg  
The Manson Campbell Co. Ltd. of Chatham, Ontario