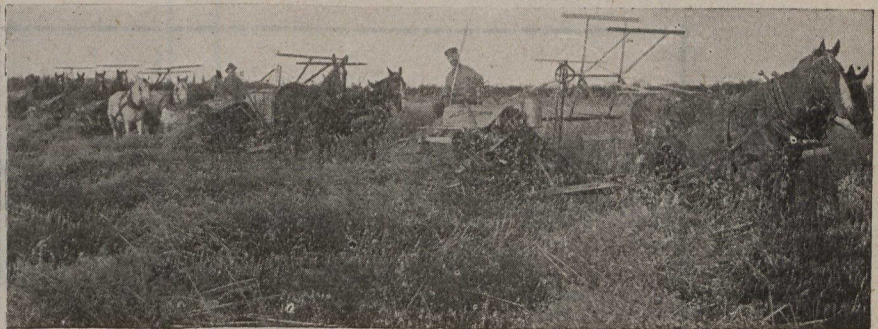


NORTHERN ONTARIO



Breaking Land in N. O.



Harvesting in N. O.

THE Great Clay Belt of Northern Ontario extends westerly from the inter-provincial boundary between Quebec and Ontario for over 400 miles—varying in depth, north and south, from 25 to 100 miles and more. It is safe to say that from 65 to 75 per cent of this vast expanse is good farm land. The soil is rich and deep and produces in abundance practically all crops grown in Old Ontario.

This fertile land lies one degree south of Winnipeg and is well watered by lakes and rivers and is covered with merchantable timber. The climate is ideal for perfect health; warm in summer, cold and vigorating in winter.

RAILROADS:—A settler can ride from the big cities of Ontario or the West in a Pullman if he wishes almost to his own door. This is something new in pioneer life.

Information re Land Settlement and Opportunities for Returned Soldiers may be had by applying to Lieut.-Col. Robert Innes, Parliament Buildings, Toronto.

For free literature descriptive of this great country,

WRITE

H. A. MACDONELL,
 Director of Colonization,
 Parliament Buildings,
 Toronto, Ontario.

G. H. FERGUSON,
 Minister of Lands, Forests and Mines.