

# Easily Made Dresses That Combine Charm and Utility

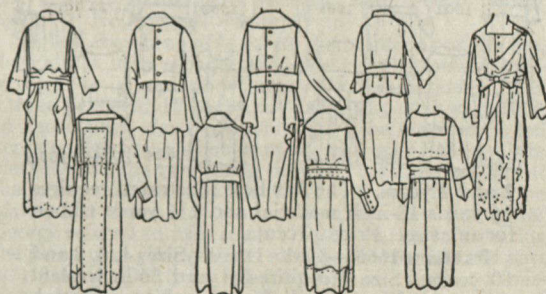


**Pattern 1392.**—Misses' or Small Women's Dress. Sizes 16, 18 and 20 years. Size 16 requires 4 3/8 yards 44-inch material with 1 1/2 yard 36-inch contrasting material and 5/8 yard 36-inch lining. Skirt measures 1 7/8 yards at lower edge. Price 20 cents. Emb. 14589. Price 20 cents.

**Pattern 1394.**—Misses' or Small Women's Dress. Sizes 16, 18 and 20 years. Size 16 requires 3 3/4 yards 44-inch material with 3/8 yard 18-inch all-over lace with 1 yard edging for collar. The skirt is a two-piece gathered model and measures 1 7/8 yards at lower edge. Price 20 cents.

**Pattern 1328.**—Misses' or Small Women's Dress. Sizes 16, 18, and 20 years. Size 16 requires 3 7/8 yards 44-inch material with 7/8 yards 36-inch contrasting material. This dainty and attractive dress closes at back underneath plastron. The skirt is a two-gored model and measures 2 yards at lower edge. Price 20 cents.

**Pattern 1630.**—Misses' or Small Women's Dress. Sizes 14, 16, 18 and 20 years. Size 16 requires 3 3/4 yards 44-inch material with 2 1/2 yards ribbon. The two-piece skirt is gathered and forms a panel which extends above waistline, and measures 2 yards at lower edge. Price 20 cents.



**Pattern 1325.**—Misses' and Small Women's Dress. Sizes 16, 18 and 20 years. Size 16 requires 5 1/8 yards 36-inch material with 1 1/2 yard 36-inch contrasting material. The skirt is a two-gored model with apron front, it is slightly raised at waistline and measures 1 7/8 yards at lower edge. Price 20 cents. Emb. 13631. Price 20 cents.

**Pattern 1468.**—Misses' or Small Women's Dress. Sizes 16, 18 and 20 years. Size 16 requires 4 1/8 yards 44-inch material. A charming design for development in wool jersey, serge or taffeta. The skirt is cut in two gores and measures 1 3/4 yards at lower edge. Price 20 cents.

**Pattern 1547.**—Misses' or Small Women's Dress. Sizes 16, 18, and 20 years. Size 16 requires 4 1/4 yards 36-inch material with 1 5/8 yards 40-inch Georgette. Dress closes at back, with bib front extending into sash which is tied at back. Skirt measures 2 yards at lower edge. Price 20 cents.

**Pattern 1115.**—Misses' or Small Women's One-piece Dress. Sizes 14, 16, 18 and 20 years. Size 16 requires 3 1/8 yards 54-inch material, with 2 yards 2-inch fur banding and 2 3/8 yards 5-inch fur banding. Width at lower edge of skirt is 2 3/8 yards. Price 20 cents. Emb. 14812. Price 20 cents.

**Pattern 1681.**—Misses' or Small Women's Bolero Dress. Sizes 16, 18 and 20 years. Size 16 requires 4 1/8 yards 36-inch material for dress with 3/8 yard 18-inch material for collar and 1 1/8 yards 4-inch ribbon for girdle. Allowing three inches at lower edge of skirt for hem, or if desired, underface. Price 20 cents.

TO supplement our Fashion Service as presented on this page, we issue quarterly for the benefit of our subscribers—"Everywoman's Needlecraft Companion"—a symposium of all that is new and practical in Needlework. The four issues are available to subscribers *only*, with every new or renewal subscription—\$1.50—plus 25 cents to cover the cost of the year's packing and mailing. Mail us your order TO-DAY.

The price of each pattern is 20 cents; this includes prepayment of postage. We guarantee safe delivery. Send money by Dominion Express Order or any way that is convenient to you—the mails are safe. Home patterns are the easiest of all to use, and the styles are always up-to-date. Every pattern is guaranteed to fit perfectly, and a guide chart accompanies each pattern. Orders are filled the same day as they are received. When ordering it is important that you write very plainly; that you give your name and address; the number and size of pattern wanted; and enclose 20 cents for each. Patterns for any design illustrated on this page may be obtained from any dealer handling Home Patterns, and from our Pattern Department, EVERYWOMAN'S WORLD, 259 Spadina Ave., Toronto, Ont.