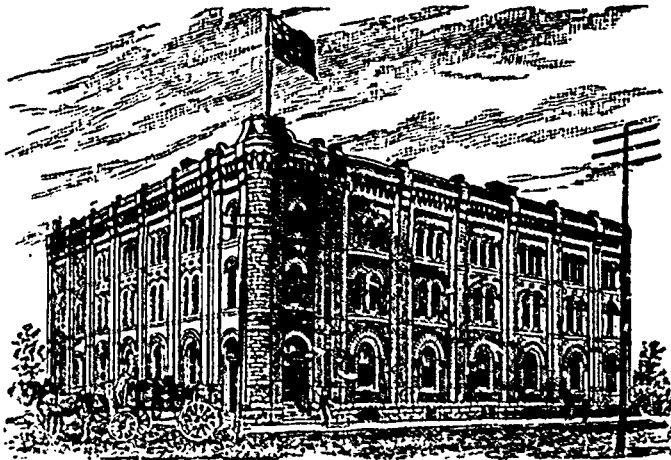


GOODS SOLD TO THE
TRADE ONLY.GOODS SOLD TO THE
TRADE ONLY.

G. F. & J. GALT, DIRECT IMPORTERS

TEAS, SUGARS, WINES, LIQUORS and GENERAL GROCERIES
CORNER PRINCESS AND BANNATYNE STREETS, WINNIPEG, MANITOBA.

JOHN PARSONS.

W. J. PARSONS.

R. A. ROGERS.

THE PARSONS PRODUCE CO.

R. A. ROGERS, Manager.

—WHOLESALE PACKERS AND JOBBERS OF—

Fancy Dairy and Creamery Butter, Eggs, Apples,
AND DRESSED POULTRY.

GENERAL COMMISSION MERCHANTS.

175 Main Street, Cauchon Block,

Telephone 620.

Winnipeg, Man.

REFERENCES: Imperial Bank of Canada, Winnipeg, Man. and Parkhill Banking Co., Parkhill, Ont.

Toronto Hardware Prices.

Trade in metals and general hardware has been good, and the situation is generally regarded as a healthy one, payments show a slight improvement. Pig iron is about steady, and there has been much greater activity in British import orders. About 1,000 tons have been sold here and west at equal to \$20.75 for Carabroe and 22.75 for Summerlee. Cables are firmer on both Scotch and English iron. British iron men do not seem willing to give up this market to the United States without a bitter fight, and it is reported that they are offering to sell the brands which have been most popular on this market at 2s 6d to 3s below the current prices in their own. It is gratifying to Canadians to notice the hold that native pig is taking on the market. Large sales of Nova Scotia iron have been made in the west recently. Copper continues firm. Tin is easier abroad, but both it and lead are firm here. Antimony weak and lower both here and abroad. Tin plates are cabled 3d lower. General hardware shows no change in values as compared with a week ago. Cut nails are going at \$2.20 net cash f. o. b. here. The horse-nail market is still in an uncertain condition, but manufacturers say that they are agreed upon a uniform advance to prices, which will afford them a good profit, as they claim to have been doing business at a loss for some time past. In old material heavy

scrap copper is firmer at 10½ to 10¾c; heavy brass is down ¼c to 8½ to 9c, and rubber ¼c to 2½ to 2¾c.

Antimony—Cookson's, per pound, 16½ to 17½; other makes, 15½ to 16¾c.

Tin—Lamb and flag, 56 and 23-lb. ingots per pound, 23 to 24c; Straight's, 100-lb. ingots, 23 to 23½c; strip, 25 to 27c.

Copper—Ingot, 14½ to 15c; sheet, 19 to 21c.

Lead—Bar, 4½ to 4¾c; pig, 3¾ to 4½c; sheet, per roll, \$4.75 to \$5.25; shot, Can. dis. 7½ per cent.

Zinc—Sheet, 6½ to 7½c; zinc spelter, 4¾ to 5c; solder, hf and hf, 19½ to 21.

Brass—Sheet, 21 to 29c.

Iron—Bar, ordinary \$2 to \$2.10; bar refined, \$2.60 to \$2.65; Swedes, 1 in. or over, \$4 to 4.50; Lowmoor, 5½ to 6c; hoops, coopers', \$2.65 to \$2.80; do, band, \$2.60 to \$2.75; tank plates, \$2 to \$2.25; boiler rivets, best, \$4 50 to \$5; sheet, 11 to 20 gauge, \$2.75 to \$3; 22 to 24 do, \$2.75 to \$3; 26 do, \$3 to \$3.25; 28 do, \$3 50 to \$3.75; Russia, sheet, per pound, 10 to 12c.

Galvanized iron—16 to 24 gauge, 5½ to 6c; 26 do, 5½ to 6½c; 28 do, 5¾ to 6½c.

Iron wire—Market bright and annealed, Nos. 1 to 16, net list from stock; 7½ per cent. discount from factory; market, tinned, per lb., 4½ to 8c; galvanized fence, 5 per cent. advance on list; barbed wire, 4½ to 4¾c; coil chain, ½ in., 4½ to 4¾c, 7-16 in., 5½ to 5¾c; iron pipe, off list, 55 p.c.;

C. H. Mahon & Co. BOOTS AND SHOES,

WINNIPEG, - MANITOBA.

Mitts, Moccasins, Felts and Rubbers.

—A FULL ASSORTMENT OF—

TENNIS AND LACROSSE SHOES,

—AND—

OXFORD TIES.

HUTCHISON, DIGNUM & NISBET,

Manufacturers' Agents and Merchants,

LINENS, IMPORTED WOOLLENS and TAILORS' TRIMMINGS. SELECT CANADIAN TWEEDS

55 Front St. West, - TORONTO.

—SOLE AGENTS IN CANADA FOR—

J. N. Richardson, Sons & Ouden, Belfast, - Linen Good
Currie, Lee & Gawn, Hawick, - - - - - Scotch Tweeds
R. Pringle & Son, Hawick, - - - - - Scotch Underware
David Moseley & Son, Manchester, - - - - - Rubber Goods
J. S. Manton & Co., Birmingham, - - - - - Buttons

Stock of Linens, Tweeds and Trimmings
always on hand.

R. B. HUTCHISON.
Late Mills & Hutchison)

ED. J. DIGNUM.

R. A. NISBET

do, galv., off list, 30 p.c.; boiler tubes, 2 in., 13c;
do, tin, 18½c.

Steel—Cast, 13 to 14c; boiler plate, ½ in.
\$2.75; 5-26 do, \$2.60; ¾ do, \$2.50; sleigh shoes,
\$2 50 to \$2.75.

Nails—3 in. and upwards, \$2 20; brads and
mouldings, dis. and 10 p.c.; wire, 70c and 5 p.c.
to 70c and 10 p.c. dis.

Horse nails—Can. dis. 50 to 60c and 10 p.c.

Horse shoes—Per keg, \$3 60.

Canada plates—Blain, \$3.20 to \$3.25.

Tin plates—1C coke, \$4.50 to \$5; 1C char-
coal, \$5.50 to \$5 75; 1X charcoal, \$6.50
to \$6 75; 1XX charcoal, \$7.50 to \$7 75; DC char-
coal, \$5.

Gunpowder—Can blasting, per keg, \$3 25 to
\$3.50; can sporting, FF, \$5; can sporting, FFF,
\$5.25; can rifle, \$5.25.

Rope—Manilla, 12½ to 13½c; eisal, 9½ to 10½c.

Axes—Per box, \$7 to \$12.

Twine—Binder, blue ribbon, 14c; red cap,
12c; crown, 11c; composite, 9c.

Glass—Fourth quality star, 1st break, \$1.40
to \$1.50; 2nd do, \$1.50 to \$1.60; 3rd do, \$3.65
to \$3.75; 4th do, \$3.95 to \$4; 5th do, \$4.25 to
\$4.30.

The Toronto Mill Stock and Metal Company
quote dealers paying prices as follows: No 1
heavy scrap, 65 to 70c per 100 lbs.; stove cast
scrap 45 to 50c; No. 1 wrought scrap, 65 to 75c;
No. 2, including sheet iron, hoop iron and
mixed steel, 20 to 25c; new scrap copper, 9½ to
10c; heavy scrap copper, 10¾c; old copper bot-
toms, 8½ to 9c; light scrap brass, 5½c; heavy
yellow scrap brass, 7½c; heavy red scrap brass,
8½ to 9c; scrap lead, 2½ to 3c; scrap zinc, 2½
to 3c; scrap rubber, 2½ to 2¾; country mixed
rags, \$1 to per 100 lbs.; clear dry bones,
60c per 100 lbs.—*Empire*, June 26.

Reimer & Wiete, lumber merchants, Gretna,
have dissolved partnership.