

BELDING, PAUL & CO.

Silk Manufacturers

Montreal

ORGANZINES, TRAMS,
SPUN SILK YARNS
AND ALL THREADS FOR
MANUFACTURING PURPOSES

Correspondence Solicited . . . **MADE TO ORDER**

GEO. D. ROSS & CO.

Woolen Commission Merchants
and Manufacturers' Agents

*CORRESPONDENCE SOLICITED
ADVANCES MADE ON CONSIGNMENTS*

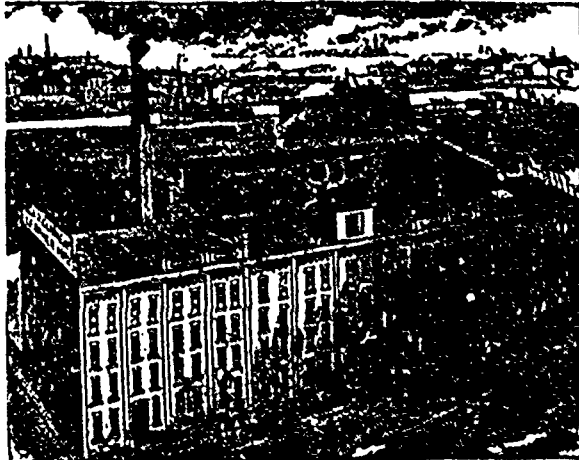
MONTREAL: 648 CRAIG STREET
TORONTO: 19 FRONT ST. WEST

USE **Mucklow's**
Dyewood Extracts
and **Dyewoods**

DOMINION DYEWOOD & CHEMICAL CO.
TORONTO
SOLE AGENTS FOR CANADA

A. R. CLARKE F. G. CLARKE C. B. CLARKE

A. R. CLARKE & CO.



Manufacturers of **CLOVES and MITTS**
Office: 28 Front St. East
Works: 100 to 200 Eastern Ave. **TORONTO**
Branches at Montreal, Quebec, Halifax, Winnipeg and Victoria

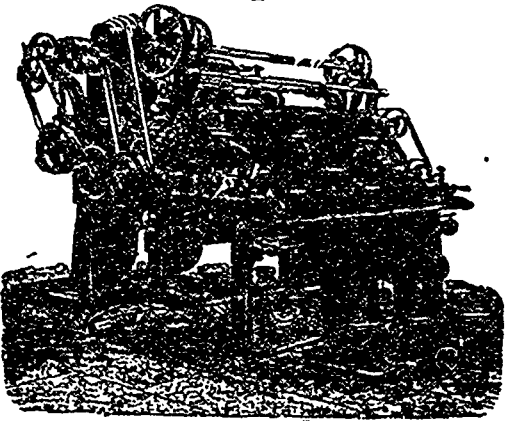
ROBERT S. FRASER
TETLOW'S ENGLISH CARD CLOTHING
Quality Guaranteed
FULL STOCK IN CANADA
Machinery Contracts made and English Sales attended
MILL SUPPLIES
465 ST. PAUL ST. . . MONTREAL

BALL ELECTRIC LIGHT CO. LTD.
70 PEARL ST. TORONTO

INCANDESCENT & ARC LIGHTING PLANTS. GENERAL ELECTRICAL SUPPLIES. POWER GENERATORS AND MOTORS.
SEND FOR CATALOGUE

DIRECT ELECTRIC ELEVATORS: The only successful Electric Elevators yet manufactured in Canada

Charles Heap, FRENCH NAPPING MACHINES



Grosselin-Moser Universal
For all kinds of Cotton, Woolen and Mixed Fabrics, either wet or dry. Capacity equal to 8 teasel gigs or 6 card machines of other makes.

Grosselin-Moser Double-action
Which naps both with and against pile. For faces of finest Wool. Capacity equal to 10 teasel gigs.

Moser-Martinot Lever
Double action, imitation hand napper For faces and backs and Worsteds in all makes, and for Blankets especially. Capacity: 4 rollers equal to 5.

Extra Card Rolls, also Card and Brush Clothing, made constantly on hand. The only complete Machines on hand.
For full particulars, etc., address:

HERBERT H. HEAP, Agent, WILLIAMSTOWN