

G. W. KENT

Lunch and
Ice Cream
Parlor
Weddings,
Ball Suppers
and Parties
Supplied

Phone 996



Weight of the Original Cake 129 lbs.

Wholesale
and Retail
Confectioner

209 Dundas
Street

London
Canada

Jas. McCormick

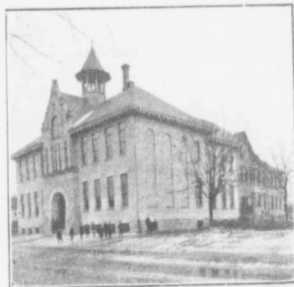
High-grade Harness, Trunks,
Suit Cases and Ladies Purses.
All kinds of Horse Supplies.

395 Talbot Street - LONDON, ONT.

Phone 2038



Simcoe Street School.



Lorne Avenue School.

Description of the McCormick Manufacturing Company's New Plant in East London.

The McCormick Manufacturing Company, manufacturers of biscuits and candy, have just about completed the construction of their magnificent new plant in London, Ontario. The factory has been designed and planned with exceptional care and attention to all details for the comfort and safety of the employees, and also with a view of producing the very best products under the most sanitary conditions.

Building Absolutely Fireproof.

In the first place, the building is absolutely fireproof, being of reinforced concrete construction of the most modern type. The boiler and engine room, as well as the bakery where the ovens are built, is separate from the main building, so that no objectionable odors, dust or smoke can penetrate the main works. The possibilities of serious accidents from boilers is also eliminated. The plant will be operated entirely by electricity, largely individual motor drives, doing away with dangerous belting, unnecessary shafting, etc. Every possible safety appliance in connection with machinery and elevators is being installed.

PROVISION FOR COMFORT OF EMPLOYEES.

Every provision has been made for the comfort of the employees, such as arrangements of dining-rooms, where employees may procure meals at cost. Same will be served up on the serve-self system, commonly used in the United States. There is also a library and reading room, rest room and Red Cross department, gymnasium, smoking rooms and dressing and locker rooms, where the employees may keep their belongings.

Extraordinary provision has been made for toilet accommodation, washrooms, drinking fountains, etc., as well as shower baths. The Company has over 100 acres of land surrounding the building, which is to be subdivided for employees' homes.

Outside sports have also been provided for, such as grounds for baseball park, football, etc., for the men and boys, and tennis courts and bowling lawns for the girls. The entire building will be surrounded with boulevards, lawns and cement paths, thus doing away with all dust and dirt which might otherwise mar the beauties of this building.