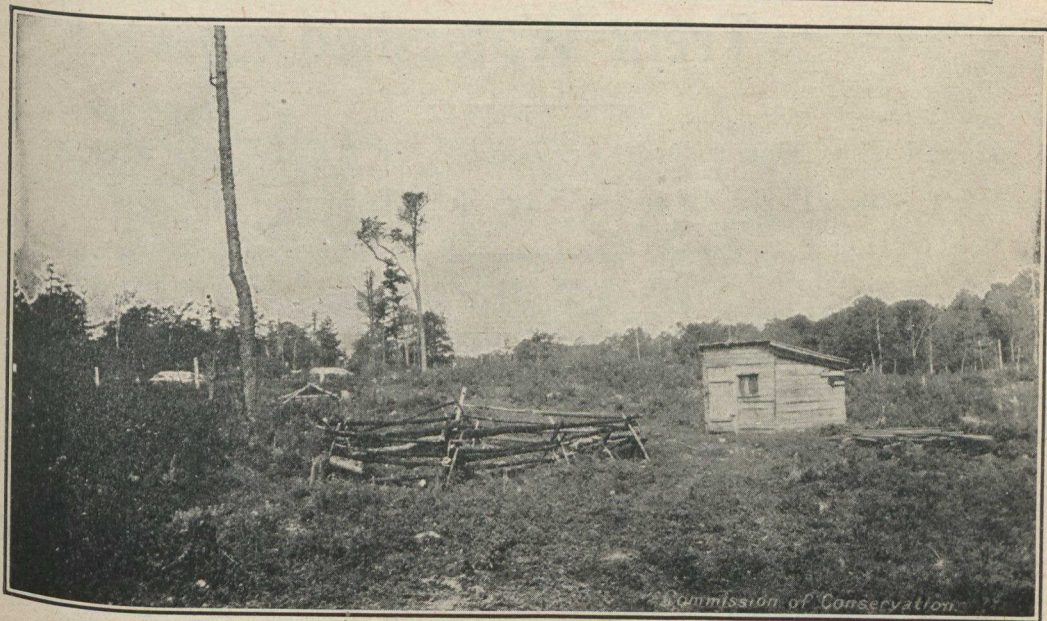
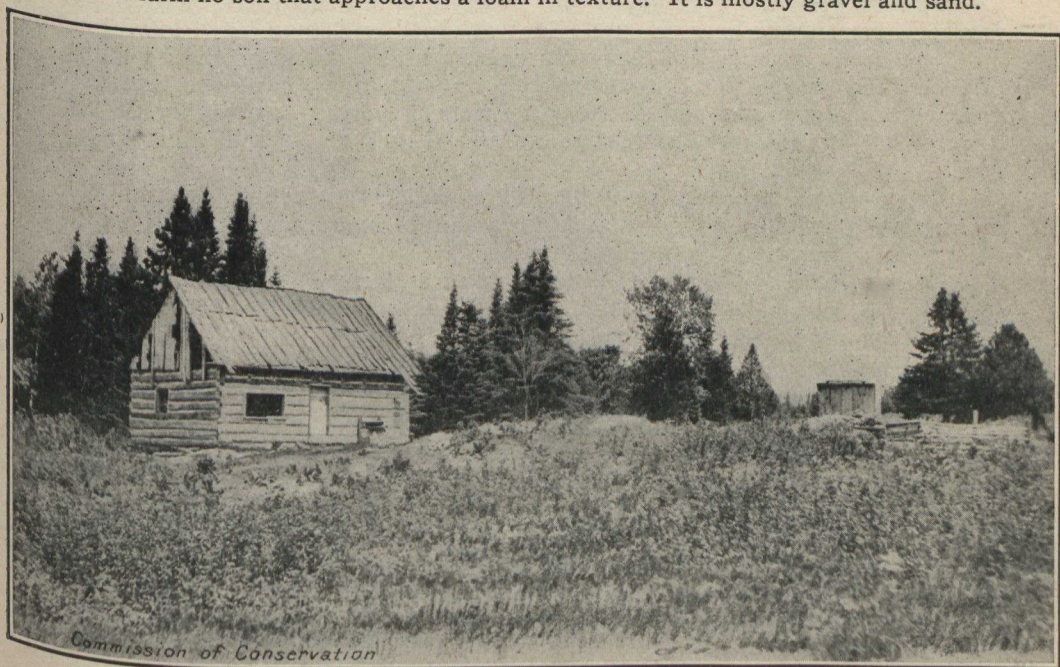


Tragedies of the Trent Watershed



THE BEGINNING.

With the exception of patches containing a few square feet, there is on this prospective farm no soil that approaches a loam in texture. It is mostly gravel and sand.



THE END.

One of the many abandoned farms in the Trent Watershed. The amount of human energy expended in attempting to make a living from such areas has been and still is, enormous.