

Telephone Main 7841

1898---TWENTY-FIRST ANNIVERSARY, COMING-OF-AGE YEAR---1919

Market Adelaide 6100

At SIMPSON'S—A Complete Assemblage of Fall and Winter Weight Underwear for Men



ALL STYLES
ALL SIZES
IN THE LOT

Hundreds of garments in the collection, in a wide range of styles and materials, offering to men an unexcelled opportunity of conveniently supplying their requirements in fall and winter underwear now.

Produced by the leading manufacturers of men's underclothing, these garments combine all the newest and most distinctive features which make for convenience and comfort. Designs and fabrics to suit every taste. An inspection will convince you of the advisability of buying now, when the ranges are complete. A few of the popular styles are here described.

Penman's Scotch Wool Underwear Garment, \$2.00

A very superior grade all-wool shirts and drawers—winter weight. Shirts have double back and breast. Sizes 34 to 44, \$2.00.

Other grades, garment, \$1.50 and \$1.75.

Penman's Rib-Knit, Garment, \$1.75.

Winter weight shirts and drawers—all-wool. Double-breasted shirts. Sizes 34 to 44, \$1.75.

Rib Wool Shirts and Drawers, Each, \$3.00

Excellent garments for winter wear. Shirts are double-breasted—elastic cuffs and ankles. Sizes 34 to 44, \$3.00.

Natural Wool Underwear, \$2.25

Soft and comfortable winter weight garments—finished in natural wool. Sizes 34 to 44. Shirts and drawers, each, \$2.25.

Fall Weight Underwear, \$1.50 Garment

Wool and cotton elastic rib-knit—ankle-length drawers, natural shape. All sizes, \$1.50.

Penman's All-Wool Garment, \$4.00

Unsurpassed for winter wear, fine even weave—light and comfortable—natural shade. All sizes, \$4.00.

Merino Underwear, \$1.50

Ideal for wear during the coming autumn. Shirts and drawers are finished with elastic cuffs and ankles. Garment, \$1.50.

Penman's Fleece-Lined Underwear

Offered at prices which are moderate for such high-grade underclothing. The more expensive are exceptional quality and are finished with double breast and back. Three grades. Garment, \$1.15, \$1.25 and \$1.50.

Stanfield's Red Label

All-wool shirts and drawers—winter weight. Sizes 34 to 44. Garment, \$3.50.

Tiger Brand, \$3.75.

Most comfortable garment—carefully finished shirts and drawers—all-wool—winter weight. Sizes 34 to 44. Garment, \$3.75.

Combination Underwear

Seasonable offerings in combination underwear, fall and winter weight garments. Many men prefer combinations, and they are offered unlimited opportunity of selection from our stock, which is now complete.

"Admiral" Combinations, \$4.50

A fall weight undergarment, wool and cotton mixture. Sizes 34 to 44, \$4.50.

90-N Combinations, \$5.50

Suitable for fall wear, all-wool, light and comfortable. All sizes, \$5.50.

Monarch de Luxe Combination, \$3.50

This a medium weight garment in cotton and wool mixture. Moderately priced at \$3.50.

Penman's Union Merino, \$2.25

Rare value at this price—durable and suitable for winter wear. All sizes, \$2.25.

Fine Ribbed Combinations, \$2.50

Fall and spring weight merino, natural shades. All sizes, \$2.50.

Tiger Brand, \$5.00

Ribbed Combinations, made of wool and cotton fabrics—winter weight. Exceptional value at \$5.00.

Penman's spring and fall weight, \$5.00.

Tru-Knit, fall weight, \$5.00.

Tru-Knit, merino, \$3.00.

Mercury Mill, \$6.00.

A garment of rare excellence, for fall wear—all-wool, light and comfortable, \$6.00.

Penman's Fleece-Lined Combinations, \$3.00.

Heavy fleece-lined—light colors—affording an excellent opportunity of securing your winter underwear at a moderate price, \$3.00.

Maywell's Combinations, \$2.25

Made of heavy cotton materials—ribbed—winter weight. All sizes, \$2.25.

Men! Combination Bath or Dressing Gown Today \$7-75

Particularly serviceable and attractive are these dressing gowns.

Well tailored from soft comfortable blanket cloths, and finished with convertible collars, two patch pockets and fancy cord girdles. Rich shades of brown, grey and red, in Gothic and Oriental pattern effects. Sizes 36 to 46. On sale this morning at \$7.75.

Simpson's—Main Floor.

Handsome Marquisette Curtains \$8.50 Pair

Just a hundred pairs in this group. Mercerized marquisette, trimmed with wide and narrow laces and insertions. Also some with corner medallions and hemstitched hems. Ivory or ecru. 2½ yards long. Today, pair, \$8.50.

Silkolines, 39c Yard, for Comforter Coverings.

1000 yards of good quality silkoline, one yard wide, in a variety of patterns and colors. Today, yard, 39c.

Genuine Scotch Madras Muslin, 59c Yard.

Imported Madras Muslin, made in Glasgow, Scotland. A dozen highly attractive patterns, in either white or cream. Some have scalloped edges. 45 inches wide. Today, yard, 59c.

Window Shades, 89c and \$1.45

At 89c Each—

Strong window shades, in either white, cream or green. Reliable spring rollers and all attachments. 37 inches wide, 70 inches long.

At \$1.45 Each—

Popular reversible color window shades, showing cream to the street and dark green inside. Best Hartshorn rollers, together with brackets, nails and pull. 37 inches wide, 70 inches long.

Simpson's—Fourth Floor.

\$2.00 Hemstitched Pillow Cases \$1.69 Pair

English hemstitched, linen-finished Pillow Cases, made from good strong cotton. Sizes 42 x 33 and 45 x 33 inches. Regularly \$2.00 pair. Special, today, pair, \$1.69.

\$2.00 Lace Scarfs, \$1.39 Each

Dresser, Buffet or Chiffonier Scarfs, in lace edge and filet lace designs. All new patterns. Sizes 18 x 36, 18 x 45 and 18 x 54 inches. Regularly \$2.00. Today, special, each, \$1.39.

Special! \$1.25 Outing Flannel, 75c Yard.

Extra! Linen Table Cloths, \$5.80

Irish Linen Table Cloths of strong even weave; made from first-class linen yarns. Floral and conventional designs. Size 2 x 2 yards. Today, special, each, \$5.80.

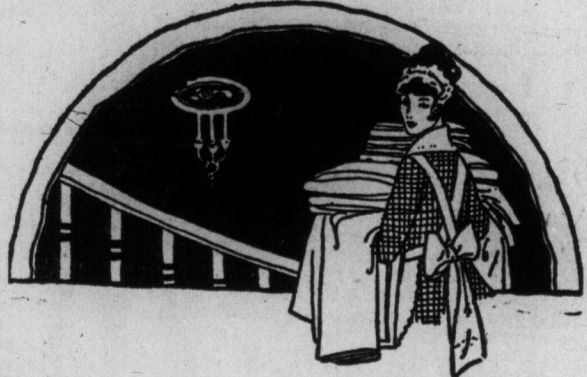
45c Striped Flannelette, 35c Yard.

1200 yards, heavy quality, 35 inches wide. Pink and white, blue and white or grey and white stripes. Not more than 20 yards to each customer. Regularly 45c. Today, yard, 35c.

Union Wool Blankets, \$8.95 Pair

White, with pink or blue borders, finished singly. Size 64 x 82 inches. Today, special, pair, \$8.95.

Simpson's—Fourth Floor.



Furniture Specials Today

Clearance! Side Tables, Half-Price, \$10.00 to \$14.00 Regularly \$20.00 to \$28.00

Five only, side tables, genuine black walnut and mahogany veneers, also mahogany finish. Long linen drawer, deep shelf. Slightly imperfect. Regularly \$20.00 to \$28.00. Half-price, \$10.00 to \$14.00.

Kitchen Cupboard, \$46.75. Regularly \$59.00.

Genuine oak, golden finish. Tilt floor bin and sifter, glass spice set, white enamel interior. Porcelain extension top, wire pan rack, sliding shelves, cutlery and linen drawers, cutlery board, metal box for cake, roll shutter front. Regularly \$59.00. Today, \$46.75.

Hammock Couches, \$19.50 Regularly \$26.75 to \$33.75

Three only, with stand.

Two of the couches have adjustable head rest and canopy. Regularly \$26.75 to \$33.75. Today, \$19.50.

Mattresses Half-Price, \$3.00 to \$4.20

30 only, slightly damaged mattresses, from 2' 6" to 4' 6". Regularly \$6.00 to \$8.45. Half-price, \$3.00 to \$4.20.

Kitchen Cupboards, \$19.95 Regularly \$24.50

Elm, golden finish, large base, two drawers. Top has two glass doors with shelves. Regularly \$24.50. Today, \$19.95.

\$64.00 Buffet, \$49.95

Colonial design, lined drawer for cutlery. Plate mirror. Regularly \$64.00. Today, \$49.95.

Simpson's—Fifth Floor.

SIMPSON'S MARKET TODAY

SIMPSON QUALITY MEATS—GOVERNMENT INSPECTED.

CHUCK ROASTS, tender young beef, per lb. .19
SHOULDER ROASTS, per lb. .23
RUMP ROAST, square end, per lb. .25
RUMP ROAST, round end, per lb. .29
PRIME CORNED BEEF, mild lean cuts, special today, per lb. .20
FRESH SMOKED HERRING, large, per pair .30
SWEET PICKLED SHOULDER OF PORK, 3 to 3 lbs., each .30
SMOKED HAM, select, mild curing, whole or half, per lb. .54
MAPLE LEAF PURE LARD, 3-lb. pails, gross weight, per pail. 1.25

WHITEFISH, dressed, per lb. .15
HALIBUT STEAKS, per lb. .30
RED SEA SALMON STEAKS, per lb. .40
FRESH FROZEN MACKEREL, per lb. .12½
FRESH SMOKED HADDERS, mild, per lb. .15
FRESH SMOKED KIPPERED HERRING, large, per pair .18

CRISCO, 1-lb. tin 35c.
Bluebell Jelly Powders, assorted, 3 packets 25c.
Carnation Brand Evaporated Milk, large tin 15c.
Shredded Wheat or Grape-nuts, per packet, 14c.
Garston's Custard Powder, per pkt., 15c.
Post Toasties, 2 packets 25c.
Orange Marmalade, No. 4 size pail, per pail 75c.
Red Salmon, tall tin, 34c.
Sure-Whip, bottle 25c.

1000 6-qt. baskets Eating or Cooking Apples, each 55c.
Finest Jersey Sweet Potatoes, 3 lbs. 25c.
10,000 lbs. Finest Cooking Onions, 4 lbs. 25c.
Choice Carrots, 4 bunches 15c.

QUAKER SECTION.
Quaker Candy, packet, 15c and 25c.

6 Special Wall Paper Values Today

Same good decorative treatments that can be obtained at a moderate cost, including:

Verdure Tapestry Paper, 25c Single Roll

Dainty colored foliage design, showing greys and pink on a light background, suitable for use in living rooms.

New Oriental Chintz Design, 23c Single Roll

A delightful combination of Japanese figures and floral ornaments printed with delicate tints of blue, pink, green and grey.

Fancy Stripe Wall Paper for Bedrooms, 17c Single Roll Cut-Out Borders to Match, 5c Yard

Small conventional stripe design, showing dainty colorings of green and yellow, with fine outline of black, on a linen effect background. "Cut-out border has dainty roses and bands, combined in rich and harmonious combination of colors.

For the Children's Bedroom, 25c Single Roll

New figured design, showing children at play, printed with pretty colors on a grey chambray-like background.

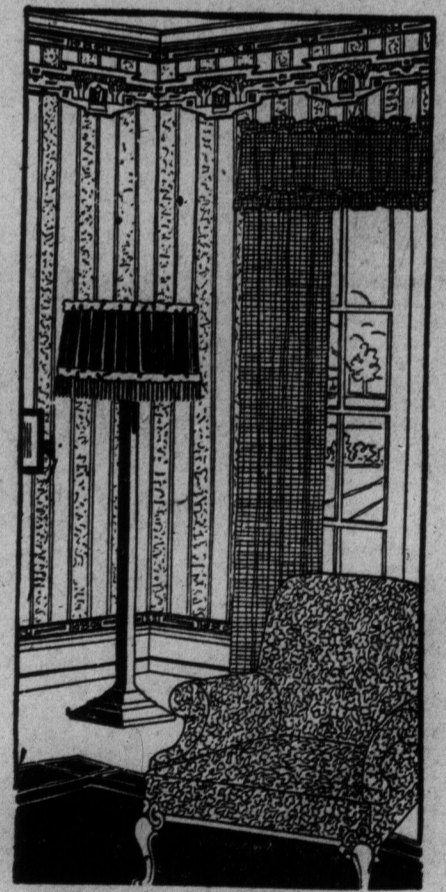
Conventional Design on Fabric Effect Background, 33c Single Roll

A refined treatment of pattern and coloring, having an artistic arrangement of ornament in two tones of warm grey.

Multi-Colored Stripe Wall Paper, 12½c Single Roll 18" Frieze to Match, 5c Yard

Serviceable for use in dining-rooms, breakfast rooms and sitting-rooms, printed with soft tones of green and brown on a neutral buff background.

Simpson's—Sixth Floor.



Simpson's High-Grade Paint

Guaranteed to Preserve and Beautify Your Property

Large Range of Colors

Inside White	Medium Grey	Maroon
Outside White	Light Slate	Medium Red
Ivory	Sky Blue	Green Tint
Cream	Light Blue	Pea Green
Light Buff	Medium Blue	Green Stone
Buff	Navy	Willow Green
Devon Grey	Golden Brown	Dark Green
Drab	Brunswick Brown	Nile Green
Pearl Grey	Dark Green	Bottle Green

Gallons, \$3.69. ½-Gallons, \$1.89. Quarts, 98c. Pints, 59c. ½-Pints, 33c.
Simpson's—Sixth Floor.

The Robert SIMPSON Company Limited