

## MINING SHOVELS

our 'FENERTY' Brand

COOK'S PAN SHOVELS,  
COAL TRIMMERS SHOVELS,  
SCRAPER SHOVELS, ETC.

ARE USED BY

*The Largest Mines in Canada*

MANUFACTURED BY  
**The HALIFAX SHOVEL CO.**  
HALIFAX, N. S.

ALL GOODS GUARANTEED

**ORNAMENTAL  
IRON WORK**  
WIRE CLOTH  
WIRE GOODS

WE SPECIALIZE IN MINER'S  
SCREENS made of HARD STEEL  
WIRE or PERFORATED SHEET  
STEEL.  
INQUIRIES SOLICITED.

CANADA WIRE GOODS MFG. CO,  
HAMILTON.

**THE GARLOCK PACKING CO.**  
Hamilton, Ontario

—Manufacturers of—

**GARLOCK PACKINGS**

"Be sure you get the Genuine."

**Everything in PACKINGS,  
and ENGINEERS SUPPLIES.**

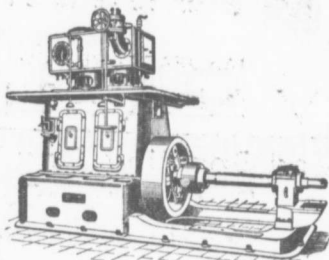
Used by Collieries in Lancashire, Stafford-  
shire & Yorkshire

**'XTERRA'** COLLIERY LAMP OIL  
For Masaut, Muesle Deflector or Closed Lamp.

PURE WHITE FLAME. LOW PRICE.  
**E. WOLASTON, Dutton St. MARGHESTER**

Sole Representatives for Canada, AUSTEN BROS.,  
Halifax, N. S.

## Cost Nothing for Repairs



A Customer says:— "We have used one of your Vertical High Speed Engines, English Type, forced lubrication, since 1907. The Engine runs at 425 revolutions per minute almost constantly night and day. It has given us every satisfaction and so far has cost us nothing for repairs."

**ROBB ENGINEERING COMPANY, LTD.,**  
AMHERST, N. S.

**INTERCOLONIAL  
RAILWAY**

Connection for

**OCEAN  
LIMITED.**

(Canada's Summer Train)

leaves **STELLARTON 7.40 a. m.**  
daily except Sunday.

arrives **MONTREAL 7.35 a. m.**  
daily except Monday.

Through Wentworth and Matapedia  
Valleys in Daylight.

Connecting in Montreal, Bonaventure Union  
Depot, with the

**Grand Trunk Railway's  
INTERNATIONAL  
LIMITED.**

LEAVING MONTREAL 9.00 A. M.  
ARRIVING TORONTO 4.30 P. M.

—and for—

**Detroit, Chicago and the West.**