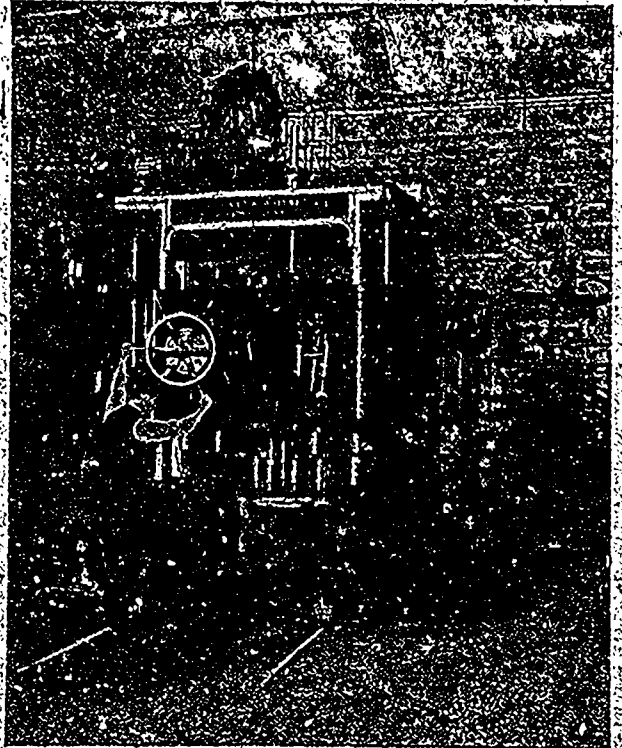


Westinghouse Motors

For Alternating and
Direct Current Service

The 6 spindle drill press illustrated,
is driven by a Westinghouse
Type C Induction Motor.

Direct drive for the individual tool enables
the power to be applied just when wanted,
and only when wanted. It further enables
each tool to be used under conditions of
maximum efficiency.



Canadian Westinghouse Co.

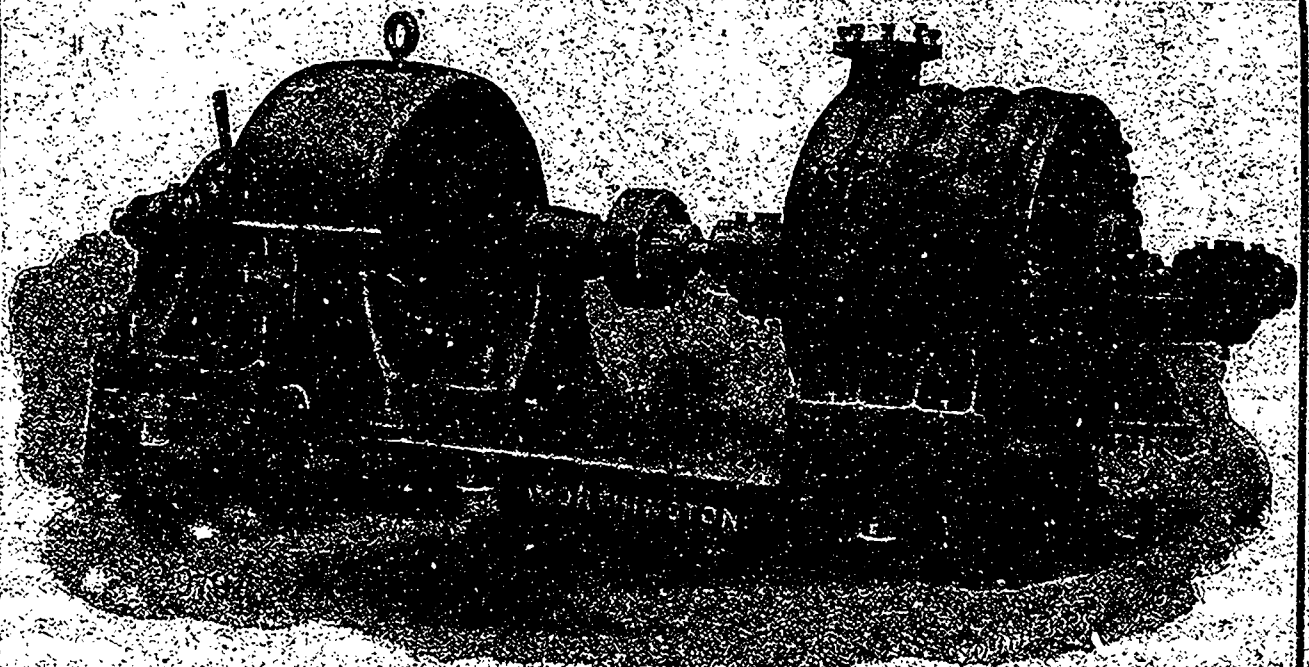
Limited

General Office and Works, HAMILTON, ONTARIO

For particulars address nearest office

Lawlor Bldg., King and Yonge Sts. : Liverpool & London & Globe Bldg.
TORONTO. MONTREAL

638 Hastings Street. HAMILTON. 184 Granville Street.
VANCOUVER. HALIFAX



4 Stage Worthington Turbine Pump, Electric Driven
FOR HEADS UP TO 2,000 FEET

The JOHN McDOUGALL CALEDONIAN IRON WORKS CO., Limited
Builders for Canada. MONTREAL