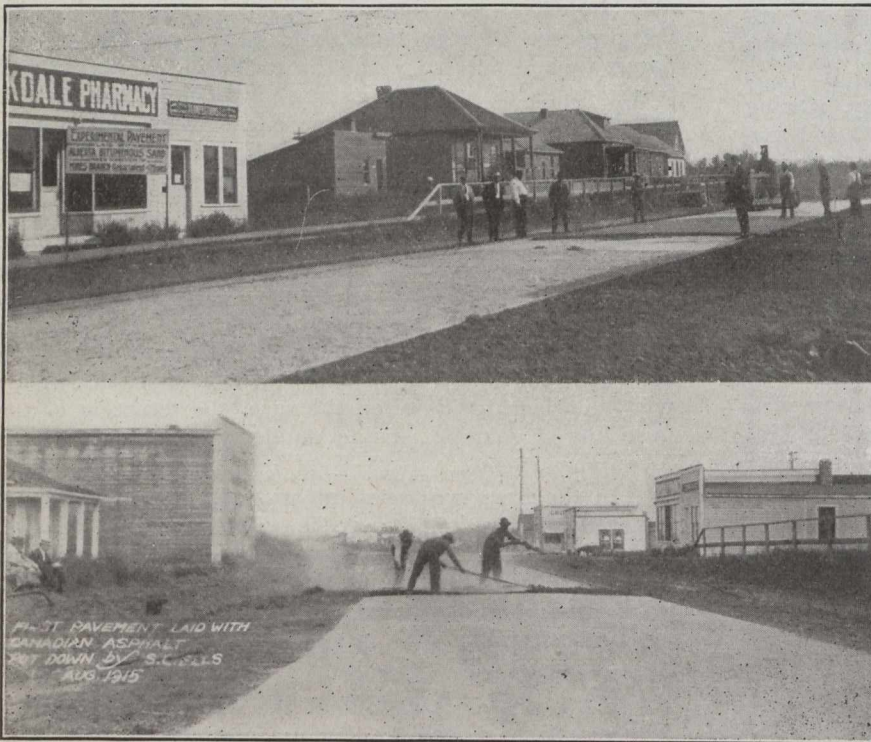


## EDMONTON DEMONSTRATION PAVEMENT—WITH CANADIAN ASPHALT.

The accompanying photographs relate to some experimental work that should be closely followed by engineers, contractors and particularly paving men. They are views of the first pavement laid with material from

the extensive deposits of bituminous sand which occur in the McMurray district of Northern Alberta. This demonstration pavement is now being laid in the city of Edmonton under the direction of Mr. S. C. Ells, of the Mines Branch, Department of Mines, Ottawa. In *The Canadian Engineer* for April 22nd, there appeared a synopsis of a report prepared by Mr. Ells for his Department on the bituminous deposits of the province. This report described their general character and variation in bituminous content, the grading of the mineral aggregate and the thickness and nature of over burden. The author was later detailed to carry out more complete investigations, and the result is the present attempt to demonstrate the material on a commercial scale.

It may be stated that cities in Western Canada are intensely interested in the work that is under way. The City Commissioners of Calgary, for instance, when they learned of the progress that was being made, sent Mr. F. C. Field, who is recognized west of the Great Lakes as a leading authority on asphalt work, to prepare a report for their consideration; and, as indications point to the successful use of these bituminous deposits in paving work, it is quite probable that other cities will shortly be trying it out. This will mark the establishment of a new industry in Alberta.



Laying the First Pavement With Canadian Asphalt, Edmonton, August, 1915.

## COAST TO COAST

**Toronto, Ont.**—The corner-stone for the new Canadian Pacific Railway station in North Toronto was laid by Mayor Church on September 9th.

**St. Vital, Man.**—About  $6\frac{1}{2}$  miles of paving is to be laid on St. Mary's Road, and  $1\frac{1}{2}$  miles in St. Vital. Work started two weeks ago. The estimated cost is \$102,000.

**Fredericton, N.B.**—The tenth annual convention of the Union of New Brunswick Municipalities was held during the week of August 23rd, Mr. J. K. Kelley, of St. John, presiding.

**Yorkton, Sask.**—Work has commenced on the Thunder Hill branch of the C.N.R. and it is expected that steel will soon be completed from its present terminus at Preeceville to section 4.36, a distance of 25 miles.

**South Vancouver, B.C.**—The sewerage construction work undertaken by this municipality to connect with the trunk sewers laid by the Vancouver and District Joint Sewerage and Drainage Board, was commenced on August 25th.

**Fort William, Ont.**—The terminal elevators at Port Arthur and Fort William are ready to handle the rush of Western grain. Combined, they have a capacity of

42,000,000 bushels, a grain handling capacity of 3,000 cars per day, or 100,000,000 bushels per month. This year's shipments will in all probability make a new record and surpass the existing 1913 record of 203,377,000 bushels through the elevators.

**Toronto, Ont.**—The Woodville Avenue trunk sewer, 5,780 ft. in length, has been completed. Its construction covered a period of nearly two years. With the exception of a short trench excavation, the sewer was tunnelled, compressed air having been used throughout, the men working under a 21-pound pressure. The sewer is circular in shape and 8 ft. in diameter. About 6,000,000 brick were used. A great deal of it is in quicksand at a depth of 45 ft. below street level.

**Winnipeg, Man.**—The Manitoba government elevator commission has completed the annual work of repairing the 168 elevators leased by the government to the Grain Growers' Grain Company. The exact cost of this year's repairs is not yet obtainable as the returns have not all been tabulated. In other years the cost of repair has averaged from \$10,000 to \$12,000, and it is said that this year will be normal in this regard. The bulk of the repairs is in connection with the breaking down of engines and the loosening of tin sheeting on the outside walls.

**Vancouver, B.C.**—The big grain elevator to be established on the government dock on Burrard Inlet has been started, excavation having been completed and the concrete footings placed for the lower piers of the main