

INCORPORATED TORONTO SINCE A BOY
1886

CONSERVATORY OF MUSIC

COLLEGE STREET
DR. EDWARD FISHER, Musical Director

EXAMINATIONS JUNE 14th TO 17th
SCHOOL OF LITERATURE & EXPRESSION
CALENDARS MAILED ON APPLICATION

CHURCH DAY SCHOOL
Major Street, Toronto
SISTERS S. JOHN THE DIVINE
KINDERGARTEN and
ELEMENTARY DEPARTMENT

Bishop Bethune
College, Oshawa, Ontario
UNDER THE CHARGE OF
The Sisters of St. John the Divine
Visitor, the Lord Bishop of Toronto
Preparation for the University

For terms and particulars apply to the
SISTER IN CHARGE, or to
The Sisters of St. John the Divine
MAJOR STREET, TORONTO

Trinity College School,
PORT HOPE, Ont. Founded 1865.
Next term begins April 12th.
This is the best term for entering young boys.
There are Twenty Pupils (value \$10 per annum) to the son of Canadian Clergy.
For Calendar and all particulars apply to
Rev OSWALD RIGBY, M.A., LL.D., Head Master.

A Telegraph Operator
has pleasant work, good wages and
rise to the highest position. We teach
thoroughly and quickly and follow
rules, signals, etc. and start on immediate
telegraph service. Our class is recom-
mended by telegraph operators and railroad
officials. Write for terms and prospectus.

CANADIAN SCHOOL OF TELEGRAPHY
Cor. Queen and Yonge Street, Toronto.

SPRING TERM FROM APRIL 5th.
A large number of new students will be admitted
with the above date, and a special attempt
to enter them you may come in at any time. We
have no summer vacation.

BRITISH AMERICAN College

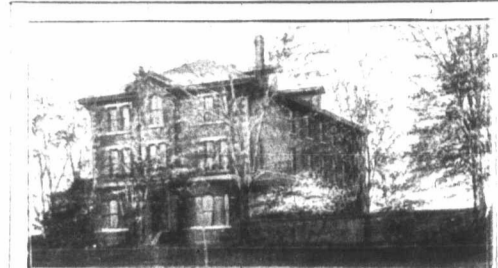
Y.M.C.A. BUILDING, TORONTO.
has a reputation for giving the most thorough
practical courses in all branches of BUSINESS
and SHOPPING, with the assistance of an
educator THAT WILL PAY with the free
information.
W. BROOKS, Principal.

ST. ALBAN'S CATHEDRAL SCHOOL
Toronto - Incorporated
For BOARDSERS and DAY BOY
Chairman - His Excellency the Bishop.
A thoroughly qualified staff. For prospectus address
M. F. MATTHEWS, Principal.

CHURCH BRASS WORK
Eagle and Kestrel Lecterns, Vases, Lower Candel-
sticks, Altar Dress, Crosses, Veils, etc. Brass
Kills, Etc. Churches and Old Houses.
CHADWICK BROTHERS
(Successors to J. A. Chadwick)
MANUFACTURERS
182 to 190 King William St. Hamilton, Ont.



Church
Brass Work
MEMORIAL
BRASSES
RAILS VASES
PRITCHARD ANDREWS
CO. OF OTTAWA, LIMITED
135 Spadina St. OTTAWA



WESTBOURNE School for Girls
340 Bloor Street W. TORONTO, Can.
Re-opens September 10th, 1903

Through our English and French, we are prepared to
prepare our pupils with the Toronto Conservatory
of Music, Dr. Fisher, Musical Director, and
J. McNeil, Organist, L.L.M., at Toronto. For
announcements and information, address, respectively,
MISS A. GURDIE, PRINCIPAL,
MISS J. J. DAVLEY, Art. Teacher.

ST. MONICA'S
Residential and Day
School for Girls
170 Bloor St. W., - - - Toronto
Re-opens Thursday, Sept. 10th

Through our English and French, we are prepared to
prepare our pupils with the Toronto Conservatory
of Music, Dr. Fisher, Musical Director, and
J. McNeil, Organist, L.L.M., at Toronto. For
announcements and information, address, respectively,
MISS A. GURDIE, PRINCIPAL,
MISS J. J. DAVLEY, Art. Teacher.


Edgehill, Church School
for Girls
WINDSOR, NOVA SCOTIA
Incorporated 1875.

The Bishop of Nova Scotia, Chairman, Board of
Trustees. The Bishop of Fredericton, member
of Board of Trustees, ex-officio.
Miss Letitia Gordon, Canadian Ladies College, English
Principal, assisted by Lever Kesmen, Experienced
Governess from England, five of whom are special-
ists in the Music and Art Departments and one non-
resident Instructor, Housekeeper, Matron and Nurse.
Extensive building with capacity for six Kes-
men's Treaties in the Water, Lighted by Electricity,
Ground covering eight acres, with Lawn for Tennis,
Croquet, Basketball, Hockey, etc. School, Dairy and
Laundry. Preparation for the Universities.
LENT TERM begins on Wednesday,
January 13th, 1904.
For Calendar apply to DR. BIND

School of the Sisters of the
Church, 100 Beverley Street,
TORONTO, Ont.
Boarding and Day School for Girls.
Terms, Nominations, Vacancies for Boarders.
ADDRESS: SISTER IN CHARGE.

CHURCH WINDOWS,
FURNITURE.
R. G. GEISSLER, Marble and Metal Work
6 West 21 St. (near St. Ann's) New York.

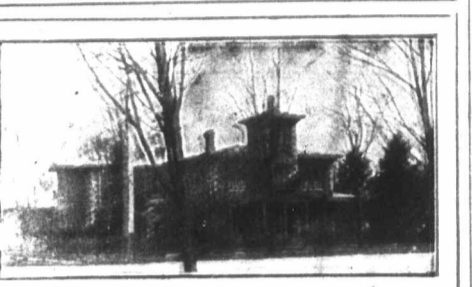
LUXFER ELECTRO-GLAZED
Church Window
Decorative Glass.
WRITE FOR PRICES.
Luxfer Prism Company, Limited,
100 King Street West, Toronto.



HARRINGTON'S
TUBULAR
Chime Bells
Lighter in Weight,
Sweeter in Tone,
Cheaper in Price
Than the ordinary bell.
COVENTRY, ENG.
CASTLE & SON
20 University St.,
Montreal Agents

FAVORABLY KNOWN SINCE 1826
HAVE FURNISHED 35,000 BELLS
CHURCH, SCHOOL, & OTHER
MENEELY & CO., PUREST BEST
WEST-TROY, N.Y. GENUINE BELL-METAL
CHIMES, ETC. CATALOGUE & PRICES FREE

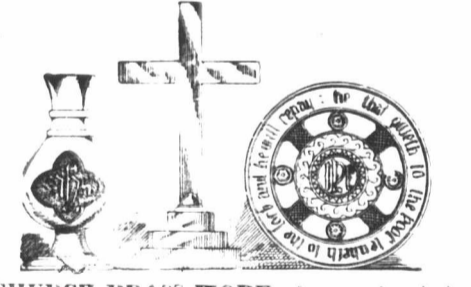
"Glen Arbor"
RESIDENTIAL AND DAY SCHOOL
FOR GIRLS
636 SPADINA AVENUE, TORONTO
English, English, French, Individual Attention,
High preparation for the Universities
and for Examination in Music and Art.
Residential and Visiting Teachers.
MISS VEALS, Lady Principal.




ST. AGNES' SCHOOL.
A Church School for Girls.
PATRON: The Lord Bishop of Ontario
Prepared for Matriculation. Conservatory
of Music Examination, held at the School
Course in Art. Practical Furniture, Domestic
Science. Beautiful building with all modern
improvements, extensive grounds. FEE \$25
MONTHLY. For prospectus apply to
MISS F. E. CARROLL.

HIGHER EDUCATION FOR GIRLS
The Bishop Strachan School
(Thirty-seventh Year)
For Calendar apply to Miss Anna, Lady
Principal, Wickham Hall, Toronto.
The Parkdale Church School
FOR GIRLS 151 Dunn Ave.
KINDERGARTEN - FOR BOYS
and GIRLS
For Calendar apply to
Miss Strachan, Lady Principal.

MEMORIAL WINDOWS.
Our productions are
extensively adopted.
Robert McCausland,
Limited
86 Wellington St. West, TORONTO



CHURCH BRASS WORK of every description
made to order on shortest notice. Designs furnished
and satisfaction guaranteed.
KEITH & FITZSIMONS, LIMITED
100 King Street West, Toronto.



STAINED GLASS
MEMORIAL
WINDOWS
BRASSES AND
DECORATIONS
Castle & Son
20 UNIVERSITY ST., MONTREAL



MEMORIALS
AND
DOMESTIC
GLASS
DOMINION STAINED GLASS
ESTD. CO. 1881
54 RICHMOND ST. E. TORONTO.
- Mackay & South Proprietors

JONES AND WILLIS
Choice Furniture Manufacturers
Metal, Wood, Stone
and Textile Fabrics.
STAINED GLASS ARTISTS
43 Great Russell Street, LONDON, ENG
Opposite British Museum.
Also at Birmingham and Liverpool

THE CANADIAN NORTH-WEST
HOMESTEAD
REGULATIONS.

Any even numbered section of Dominion Lands in
Manitoba or the North-West Territories, excepting
land 20, which has not been homesteaded, or re-
served to provide wood lots for settlers, or for other
purposes, may be homesteaded upon by any person
who is the sole head of a family, or any male over 21
years of age, to the extent of one quarter section, of
the acres, more or less.

ENTRY.
Entry may be made personally at the local land
office for the district in which the land to be taken is
situated, or if the homesteader desires, he may, on
application to the Minister of the Interior, Ottawa,
the Commissioner of Immigration, Winnipeg, or the
local agent for the district in which the land is situated,
receive authority for some one to make entry for him.
A fee of \$10.00 is charged for a homestead entry.

HOMESTEAD DUTIES.
A settler who has been granted an entry for a
homestead is required by the provisions of the Do-
minion Lands Act and the amendments thereto to
perform the conditions connected therewith, under
one of the following plans:-
(1) At least six months' residence upon and cul-
tivation of the land in each year during the term of
three years.

(2) If the father (or mother, if the father is de-
ceased) of any person who is eligible to make a home-
stead entry under the provisions of this Act, resides
upon a farm in the vicinity of the land entered for
by such person as a homestead, the requirements of
this Act as to residence prior to obtaining patent may
be satisfied by such person residing with the father
or mother.

(3) If a settler has obtained a patent for his home-
stead, or a certificate for the issue of such patent,
countersigned in the manner prescribed by this Act
and has obtained entry for a second homestead, the
requirements of this Act as to residence prior to ob-
taining patent may be satisfied by residence upon the
first homestead, if the second homestead is in the
vicinity of the first homestead.

(4) If the settler has his permanent residence upon
farming land owned by him in the vicinity of his
homestead, the requirements of this Act as to resi-
dence may be satisfied by residence upon the said
land.

The term "vicinity" used above is meant to in-
dicate the same township or an adjoining or cornering
township.

A settler who avails himself of the provisions of
Clauses (2), (3) or (4) must cultivate 30 acres of his
homestead, or substitute 20 head of stock, with build-
ings for their accommodation, and have besides 20
acres substantially fenced.

Every homesteader who fails to comply with the
requirements of the homestead law is liable to have
his entry cancelled, and the land may be again
thrown open for entry.

APPLICATION FOR PATENT.
Should be made at the end of the three years, before
the Local Agent, Sub-Agent, or the Homestead
Inspector. Before making application for patent,
the settler must give six months' notice in writing to
the Commissioner of Dominion Lands, at Ottawa,
of his intention to do so.

INFORMATION.
Newly arrived immigrants will receive at the Immig-
ration Office in Winnipeg or at any Dominion Lands
Office in Manitoba or the North-West Territories,
information as to the lands that are open for entry,
and from the officers in charge, free of expense, ad-
vice and assistance in securing land to suit them.
Full information respecting the land, timber, coal
and mineral laws, as well as respecting Dominion
Lands in the Railway Belt in British Columbia, may
be obtained upon application to the Secretary of the
Department of the Interior, Ottawa, the Commis-
sioner of Immigration, Winnipeg, Manitoba, or to
any of the Dominion Land Agents in Manitoba or
the North-West Territories.

JAMES A. SMART,
Deputy Minister of the Interior.
N.B.—In addition to Free Grant Lands to which
the regulations above stated refer, thousands of acres
of most desirable lands are available for lease or
purchase from railroad and other corporations and
private firms in Western Canada.

J. YOUNG
THE LEADING Undertaker and
359 YONGE ST. Embalmer
Telephone 679