

The book that shows by plainly-told directions how easy it is to build with Concrete

Concrete construction is not only ideal construction for the farm—it is also easy construction.

Almost anything you wish to build of concrete can be built yourself, in your spare time—if you take as your guide our wonderful book "What the Farmer can do with Concrete."

The directions it gives are simple and easy to follow.

The materials it calls for are handy—sand

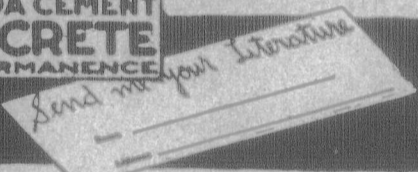
and gravel, which you have at hand, and "Canada" Cement which is sold by dealers everywhere.

Begin now to replace your temporary buildings with Concrete buildings. The first step is to secure our book—and that you may do by simply writing for a copy—the book is free to any farmer.

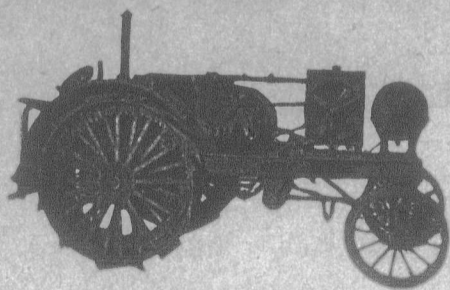
**CANADA CEMENT COMPANY LIMITED**

841 Herald Building Montreal  
 Sales Offices at **Montreal Toronto Winnipeg Calgary**  
 Canada Cement can be secured from over 2,000 dealers in nearly every city, town and village in Canada.  
 If you cannot locate a convenient dealer, write our nearest Sales Office.

**CANADA CEMENT CONCRETE FOR PERMANENCE**

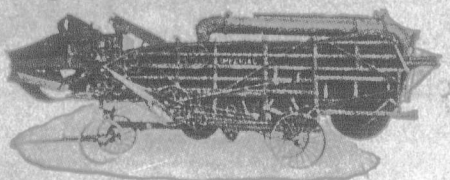


**Tractors and Threshers**



**WATERLOO BOY**

The Simplest, most Accessible, most Powerful 3-Plow Tractor on the market.  
 Suitable for hauling & Plows, Threshing, Silo Filling and General Farm Work.



Individual Farmers' Threshers, suitable size to be driven by small Tractors and Gasoline Engines. Do your own threshing. Keep your farm clean and save expense.

Write for free catalogue, prices and any information wanted.

**THE ROBT. BELL ENGINE & THRESHER COMPANY, LIMITED**  
 Seaforth, Ont.

Also Steam Tractors, and large size.

**Now is the Time to Order Your Potato Bug Poison**

Acco Spray Powder kills the potato bug and flea beetle. Half the price of Paris Green and equally as effective. A guaranteed product. For sale at all Drug and Hardware Stores. Send for circulars.

**ACCO CHEMICAL CO., Ltd.**  
 25 River St. Toronto  
**HAROLD F. RITCHIE & CO., Ltd.**  
 Toronto Sole Agents



"Goes Like Sixty"

**This Engine Will Cost You Nothing**

You need an engine—get a Gilson on our new, easy-payment plan, and it will pay for itself. You have the work for it to do this Fall and Winter, help is scarce and high-priced—save yourself a lot of worry and enjoy that "feeling of security" which is such a definite part of the staunch, reliable Gilson Engine.

Gilson Engines have long enjoyed an indisputable reputation for dependability, power, simplicity and economy. This year finds us with an even more attractive proposition for the discriminating buyer. Prices of everything you have been buying have been soaring, but by careful management, we are able to furnish Gilson Engines at remarkably low prices. Write to-day for catalogue, price, and easy-payment plan, stating what size you are interested in.

**GILSON MFG. CO., Limited, 259 York St., Guelph, Ontario**

**The Wonderful GILSON The Lightest Running Blower-Cutter Made**

Pours a steady stream of uniformly cut ensilage into the highest silo at the rate of 8 to 30 tons per hour—according to size. Use your own gasoline engine, 4 h.p. or more. Great power saver. The Gilson "Throws as well as Blows." The simple, scientific, carefully worked-out construction of the blower. It has broken all records for high elevation and rapid work with light power. Made in three sizes to suit every need. Built for years of hard service. Has a one-piece, semi-steel frame, gear transmission only. All bearings in perfect alignment at all times. Easily adjusted for shredding or cutting. Easy to set up, operate and take down. Nearly 10,000 in use and giving best of satisfaction. Get our Cutter catalogue—it shows the different sizes of "Gilson" Fillers and how they reduce the cost and time of filling to the lowest possible. Send for your copy TO-DAY.



Made in Canada

WRITE FOR FREE "GILSON" BOOK

**GILSON MFG. CO. LTD.** 509 York Street, GUELPH, ONT.

Please Mention The Advocate



**For Maple Syrup and Sugar**

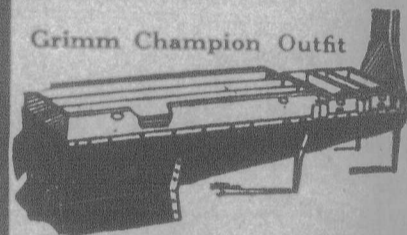
Every maker of Maple Goods in Eastern Canada should be interested in this remarkable contest. It will help all makers of Sugars and Syrup in the Grimm Champion Evaporator to have an expert opinion of their goods, whether they win a prize or not. The

**Grimm Champion Outfit**

is built with one idea—the best Syrup and Sugar at the least cost. Start with good, clean sap and the Grimm Champion does the rest. Put a champion in your grove as early as possible. We can give you the right size at the right price.

Write  
**The Grimm Manufacturing Co. LIMITED**  
 40 Wellington Street  
**MONTREAL QUE.**

**Grimm Champion Outfit**



**HYLO SILO**

Sweet Fresh Ensilage down to the last forkful!

THE HYLO SILO is perfectly air-tight. No frozen or spoiled ensilage around the walls. Convenient and perfect fitting doors, adjustable without hammer or wrench. Made of Guaranteed Long Leaf Yellow Pine. Built to last a life-time. Stands rigid when empty.

Write for prices and catalogue. AGENTS WANTED.

Gilson Mfg. Co. Ltd. 49 York St. Guelph

**FIRST PRIZE**

O.A.C. No. 72 Oats, in field crop competition.

Also winner of two firsts at Ottawa Winter Fair, Prize winning O.A.C. No. 21 Barley at Guelph and Ottawa. Both grown from registered seed under rules of C.S.G.A. Also a small amount of Marquis Wheat, common White Pea Beans (Early Maturing) and Alsike. Samples and price on request.

**OSCAR KLOPP, SEED GROWER**  
 Zurich, Huron Co., Ont.

A quantity of choice O.A.C. 72 oats grown from registered seed \$1.00 a bushel. Bags free.  
**Gordon Harris, Dorchester, Ont.**

**SEEDS**

A quantity of No. 2 Alsike Clover Seed, grown in Haldimand County. An attractive price will be quoted to intending purchasers.

**Parkinson Bros. R. R. 5, Hagersville, Ont.**

**FOR SALE**

5-10 h. p. Avery Tractor with extras.  
**G. K. WHITE - Downsview, Ont.**  
 R. R. No. 1

**SEED CORN**

Kiln dried improved White Cap Yellow Dent. Government test eight-five per cent in four days. One hundred per cent in ten days. Write for Bondy's Seed Annual dated Feb. 12th, 1919.  
**Darcy E. Bondy - Arner, Ont.**