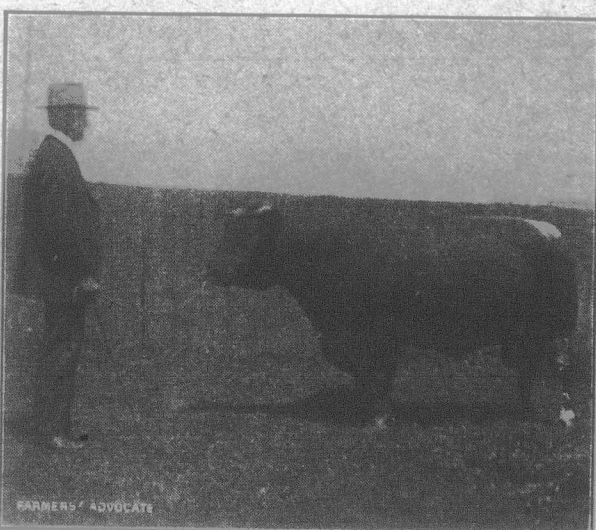


## Type, Conformation and Quality the Salients in Beef Cattle Judging.



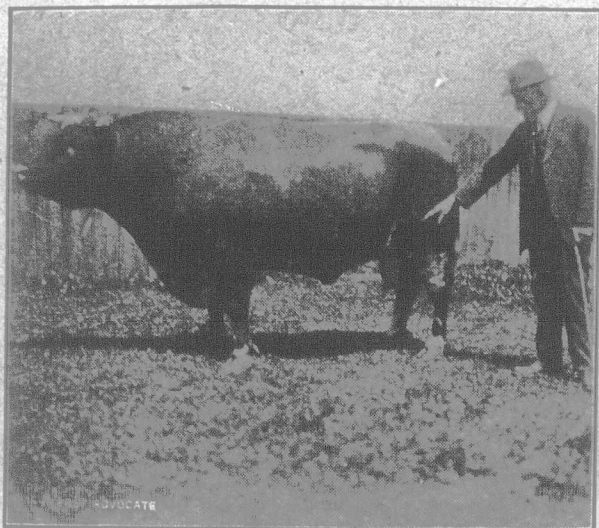
**Broadside View.**  
Note straightness of lines and general conformation.



**Front View.**  
Study the head for type and character and the body for width.



**Rear View.**  
Look for straightness of top line, width and conformation of quarters.



**Viewing the Rear Flank.**  
The rear flank should be well let down.



**Looking for Depth of Chest.**  
Depth and thickness of chest indicate constitution.



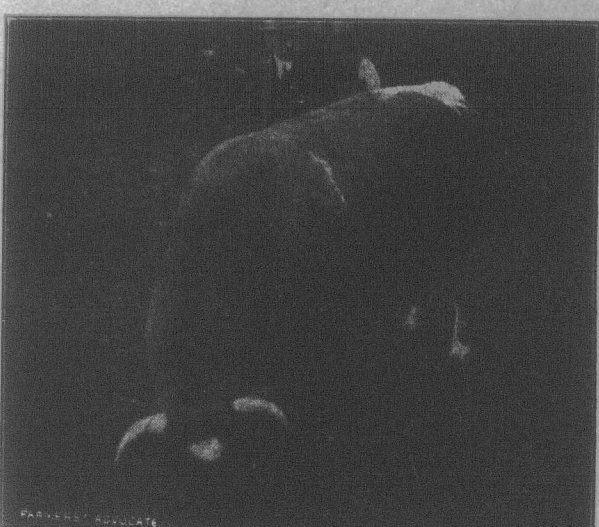
**Looking for Breadth of Chest.**  
Breadth of chest indicates strength of constitution and fleshing qualities.



**Feeling the Shoulder.**  
The shoulder should be broad, smooth and well fleshed.



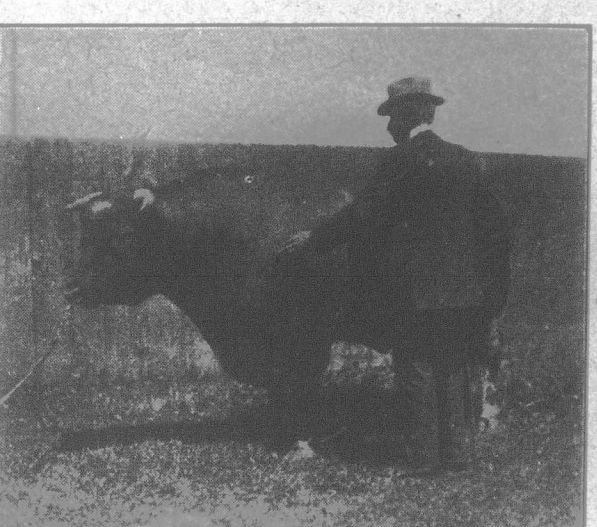
**Feeling the Back.**  
The back should be straight, wide and well fleshed.



**Thickness of Loin.**  
A wide deeply fleshed loin is desirable.



**Indicating a Well-Arched Rib.**  
The rib should be well sprung, giving a broad back.



**Feeling the Shoulder Point.**  
The shoulder point should be well covered with flesh.



**Feeling the Skin.**  
A loose, pliable skin denotes good feeding qualities.