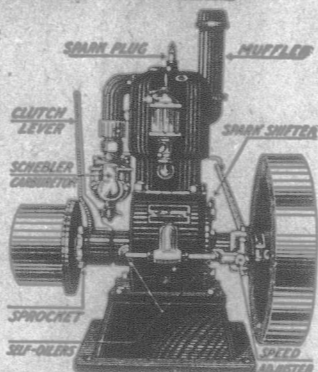


4 H.P. Cushman Weighs Only 190 lbs.
8 H.P. 2 Cylinder Only 320 lbs.

Cushman Engines are the lightest weight farm engines in the world, yet they are even more steady running, quiet and dependable than most heavy engines, because of Throttle Governor, perfect balance and almost no friction nor vibration. The simple Cushman Governor releases just enough fuel to take care of the load at any moment, thus avoiding the fast and slow speeds at which most engines run. While Cushman Engines are only about one-fourth the weight, per horsepower, of most other stationary engines, they will deliver as much or more steady, reliable power, per rated horsepower, than any other farm engine made.



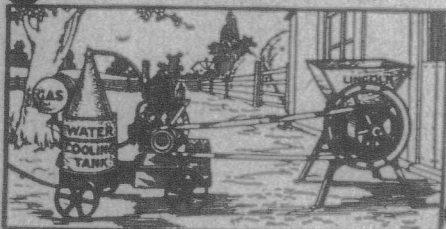
Note the Many Special Advantages Not Found On Other Engines.

Cushman Light Weight Engines
For All Farm Work—4 to 20 H. P.

Are not cheap engines, but they are cheap in the long run, as they do so many things heavy engines cannot do. May be attached to machines such as binders, balers, etc., to save a team. Easy to move around. Moving parts enclosed and run in bath of oil. Run at any speed—speed changed while running. Direct water circulating pump prevents overheating. Schebler Carburetor and Friction Clutch Pulley.

The ONE Binder Engine
 The Cushman 4 H. P. is the one practical binder engine. Its light weight and steady power permit it to be attached to rear of binder. Saves a team during harvest.

Farmer's Handy 4 H. P. Truck
 Easy to Move Around from Job to Job. Same Engine Used on Binder.



Dave Linton, Ransom, Ill., says: "I can do everything with the 190-lb. Cushman that I could with an engine that weighed 1000 lbs., and do it better and with a lot less noise." Ask for our Light Weight Engine Book, sent free. CUSHMAN MOTOR WORKS OF CANADA, LTD., 283 Princess Street, Winnipeg, Man.

EXCLUSIVE SELLING AGENTS FOR
 Fanning Mills—Smut and Pickling Machines—Vacuum Washing Machines—Lincoln Grinders—Lincoln Saws—Incubators—Universal Hoists—Automatic Cream Separators—Champion Cream Separators—Portable Grain Elevators—Wagner Hardware Specialties—Mountaineer and Little Giant Neck Yoke Centers.
 DISTRIBUTING POINTS FOR ONTARIO:
 Foot of George Street TORONTO
 143 York Street LONDON, ONT.



The Value of an Engine—like a promissory note—depends on the Name of the Maker

POWER plus Service

Mr. H. TUTTON, of Brantford, Ont., writes: "Gentlemen:—I have had my Gilson 6 h.p. Engine for eight years and it is equally as good as new now, after doing all our work. In all this time, I have had absolutely no expense for repairs. I would not be without it for anything. I can chop a bag of the heaviest grain in four minutes—mixed grain and oats in less time. I also use it on the circular saw, rip saw, cutting box, etc. All these jobs it handles easily, with great strength. Compared with other makes around me, I am perfectly satisfied with its economy of fuel."

When you buy a "GILSON" Engine, you buy reliable power plus service. We point with pride to the many GILSON Engines, turned out in the early part of our career, that to-day are running as smoothly and giving the same reliable service as when they left our factory.

The owners of these engines will tell you frankly that their engines have actually cost them less and given them more service than engines which could have been bought at a far lower first cost. Durability—dependability—Service to the Buyer are the watchwords of the GILSON factory.

Every man who gets a GILSON product secures for himself SAFETY, SERVICE and SATISFACTION. Write for Catalogues. (2)

THE GILSON MFG. CO., Limited - 9 York St., GUELPH, Ont.

SEED PEAS AND BEANS

We are desirous of arranging with practical farmers located in good pea-growing sections, that are free from Pea Bug or Weevil, to grow seed peas for us on contract. We supply the seed at your nearest station. For further particulars regarding our interesting proposition, address:

W. P. NILES, Limited, Wellington, Ont.
 GROWERS OF SEED PEAS AND BEANS

HYLO SILO

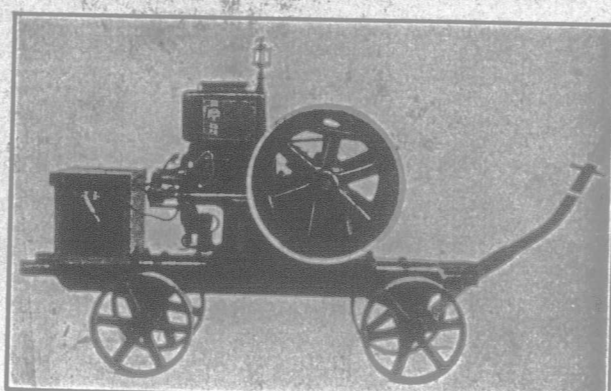
Sweet Fresh Ensilage down to the last forkful
 THE HYLO SILO is perfectly air-tight. No frozen or spoiled ensilage around the walls. Convenient and perfect fitting doors, adjustable without hammer or wrench. Made of Guaranteed Long Leaf Yellow Pine. Built to last a life-time. Stands rigid when empty. Write for prices and catalogue. AGENTS WANTED. Gilson Mfg. Co. Ltd., 49 York St., Guelph.

"London" Cement Drain Tile Machine

Makes all sizes of tile from 3 to 18 inches. Cement Drain Tiles are here to stay. Large profits in the business. If interested, send for Catalogue No. 2. LONDON CONCRETE MACHINERY CO., Dept. B, London, Ont. World's Largest Manufacturers of Concrete Machinery

CUT THIS OUT

Farmer's Advocate Pen Coupon, Value 4c. Send this coupon with remittance of only \$1.52 direct to the Fleet Pen Co., 119 Fleet Street, London, England. In return you will receive by registered post, free, a splendid British-made 14ct gold nibbed, self-filling Fleet Fountain Pen, value \$4 (16s. 6d.). Further coupons, up to 13, will each count as 4c. off the price, so you may send 14 coupons and only \$1. Say whether you require a fine, medium or broad nib. This great offer is made to introduce the famous Fleet Pen to Canada. Over 100,000 have been sold in England. Agents Wanted. Liberal Terms.



Direct from the Factory to the Farmer
 Made in Canada
Monarch Gasoline Engines

1 1/2 to 35 Horse Power
 Grain Grinders, Ensilage Cutters, Saw Frames and Pump Jacks

This engine built specially for small jobs around the farm and in connection with our intermediate pulley takes care of the churning, washing, pumping, etc. Being mounted it is easily moved from place to place. Canadian Engines Co. Ltd., Dunnville, Greenock, Nov. 1, 15. Dear Sirs.—I bought from your agent Mr. Roe a six H.P. Monarch Engine. I have had it two seasons and I ran a chopper, circular saw, corn blower and also a threshing machine; this engine has given me great satisfaction and I think there is no engine on the market will equal it. Yours truly, J. G. Carter. Write for catalogue and prices to—Canadian Engines Ltd., Dunnville, Ont. FROST & WOOD Co., Limited, exclusive sales agents east of Peterboro, Quebec and the Maritime Provinces. Good live agents wanted in unrepresented territory.

RAW FURS

WE BUY THEM! Thousands of satisfied shippers say we give good returns. Good reasons: we pay highest market price, give honest assortments and make quick returns. It will really pay you to ship to us. We charge no commissions and pay express and mail charges. Write for free price list and shipping tags sent to trappers and dealers only. BENJAMIN DORMAN, Inc., 147 West 24th St., RAW FURS, GINSENG, GOLDEN SEAL, New York

Farmers and Lumbermen!
 Why throw away your money? We furnish you, freight paid to your nearest railway station, this beautiful \$30 set of Bob sleighs, fully guaranteed, for \$23 (twenty-three dollars). Ask your neighbor about them. Nearly every one knows the Hastings Sleigh to be the best made, easiest running and strongest sleigh in the market. Address: THE HASTINGS WAGGON COMPANY, Watford, Ontario

Westervelt School
 Y.M.C.A. BLDG., LONDON, ONT.
 BUSINESS AND SHORTHAND
 Students assisted to positions. College opens Sept. 1st. Catalogue free. Enter any time. J. W. Westervelt J. W. Westervelt, Jr., C. A. Principal Vice-Principal 18

DO YOU NEED FURNITURE?
 Write for our large Photo-illustrated Catalogue No. 7—it's free to you. THE ADAMS FURNITURE CO., Limited Toronto, Ontario

Make Your Own Will
 In your home. No lawyer's fees. BAX CORRECT WILL FORM Sent with full instructions and specimen will for 35c. Sold by all stationers and druggists (take no substitute) or post free from Bax Will Form Co., Dept. 191, 257 College Street, Toronto.

THOUSANDS of farms and city properties for sale or exchange. Send to us for our catalogues—Free. A number of Western farms to exchange for Ontario property. Tell us your wants. THE WESTERN REAL ESTATE EXCHANGE, Limited 78 Dundas St. London, Ont.

RAW FURS
 Highest cash price paid for raw furs. Oldest in trade. Write for price list and tags—FREE. C. H. ROGERS, WALKERTON, ONT.

Please mention "The Farmer's Advocate."