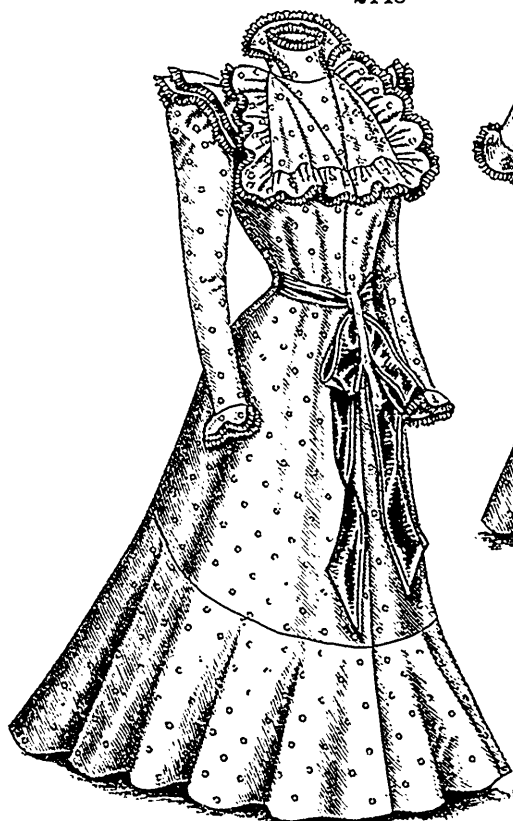


be in either full or elbow length. The long sleeve has a circular cuff with rounding corners falling softly over the hands, while the elbow sleeve has a gathered ruffle of the material for a finish. Rounding double circular caps trimmed with plaitings of silk ripple over the tops of the sleeves. The tea-gown may be made with a sweep or in round length, as preferred.



2148

2148



2148

Front View.

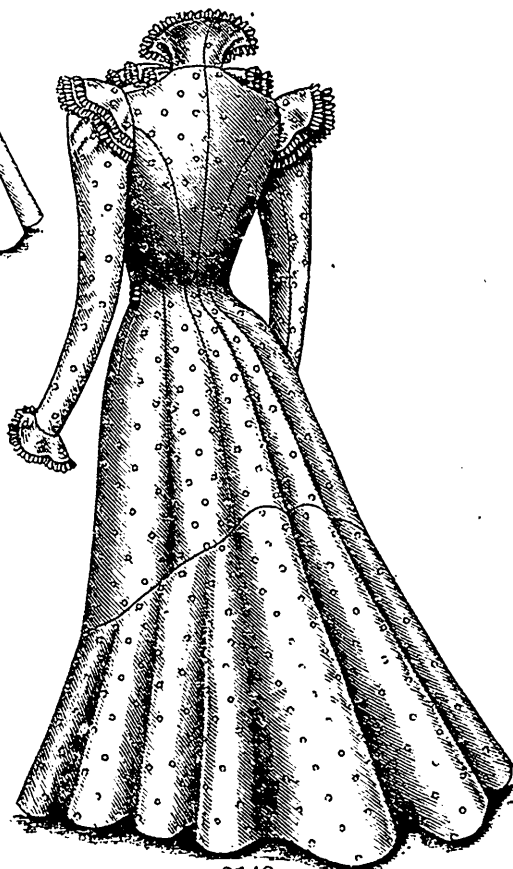
Cashmere, Henrietta, silk, etc., can be used for the tea-gown. A very stylish gown of this description was made of soft yellow crêpon, with the ruffles of white net edged with narrow, black, shirred ribbon; a broad sash made of ribbon-trimmed net was tied gracefully about the waist.

We have pattern No. 2148 in nine sizes for ladies from thirty

to forty-six inches, bust measure. To make the tea-gown for a lady of medium size, calls for eight yards and three-fourths of material thirty inches wide, with one yard of silk twenty inches wide for plaitings. Price of pattern, 1s. or 25 cents.

LADIES' DOUBLE-BREADED LONG COAT WITH REMOVABLE HOOD. (TO HAVE THE SLEEVES GATHERED OR PLAITED.) KNOWN AS THE NEWMARKET COAT.
(For Illustrations see Page 677.)

No. 2182.—The Newmarket coat fashioned on up-to-date lines is a popular fancy this season; this one is represented made of tan covert cloth and tailor-finished with stitching. It may be made with or without the silk-lined hood, which falls gracefully over the shoulders, and is simply fashioned



2148

Back View

LADIES' TEA-GOWN OR WRAPPER, WITH CIRCULAR-FLOUNCE LOWER PART. (TO BE MADE WITH FULL-LENGTH OR ELBOW SLEEVES, WITH A SWEEP OR ROUND LENGTH AND WITH OR WITHOUT THE CHEMISETTE AND FITTED UNDER-FRONT.)
(For Description see Page 675.)

plaited at the top or have their fulness collected in two rows of gathers, as seen in the illustrations.

Rough heather mixtures will be much used for storm coats of this description, while a light shade of broadcloth, with a hood lined with bright plaid silk, will prove very dressy. The collar and lapels could be of fur, or an ornate touch given by inlaying them with velvet.

We have pattern No. 2182 in nine sizes for ladies from thirty to forty-six inches, bust measure. To make the coat for a lady of medium size, calls for five yards and an eighth of material fifty-four inches wide with one yard of silk twenty inches wide to line the hood. Price of pattern, 1s. or 25 cents.

with a single seam that induces a pretty, pointed effect, the outer edges reversing easily. Splendid adjustment is given by a center seam, side-back gores and under-arm darts, the front hanging loose but smooth and suggesting the curved outlines of the figure. The center seam terminates at the top of coat-laps, while coat-plaits are introduced at the side-back seams, a button at the top of each plait giving an ornamental touch. The fronts are reversed in stylish lapels that extend in points beyond the ends of the rolling collar and are closed below in double-breasted fashion with button-holes and large buttons. Hip pockets are inserted in both fronts, and a small cash pocket is inserted in the right front, all of which are covered with oblong pocket-laps. The two-seam sleeves may be box-