

The Robert SIMPSON Company Limited

Store Opens 8 a.m.

Closes 5.30 p.m.

H. H. FUDGER, President

J. WOOD, Manager

Phone Number Main 7841

The Robert SIMPSON Company Limited

5 Hours Saturday at Simpson's Fall Exhibition

Men's Suits In a Half-Day Sale

Just before the holiday comes this special lot of handsome well-made suits for men at prices far below their usual cost. The opportunity is also excellent for Exhibition visitors, and will prove a ready introduction to the vast resources of the men's departments.

Suits made from fine English tweeds and worsteds, in fancy stripe designs. Out single-breasted, three-button style; mohair linings, and tailored by expert workmen. These suits are samples and broken lines cleared from a leading manufacturer, and sell in the regular way at \$16.50, \$18.00, and \$20.00. Saturday Sale price, \$9.95.

MEN'S NEW FALL OVERCOATS.

Saturday will see one of the finest stock of

Men's New Fall Overcoats, marked, put into stock, and ready for your inspection.

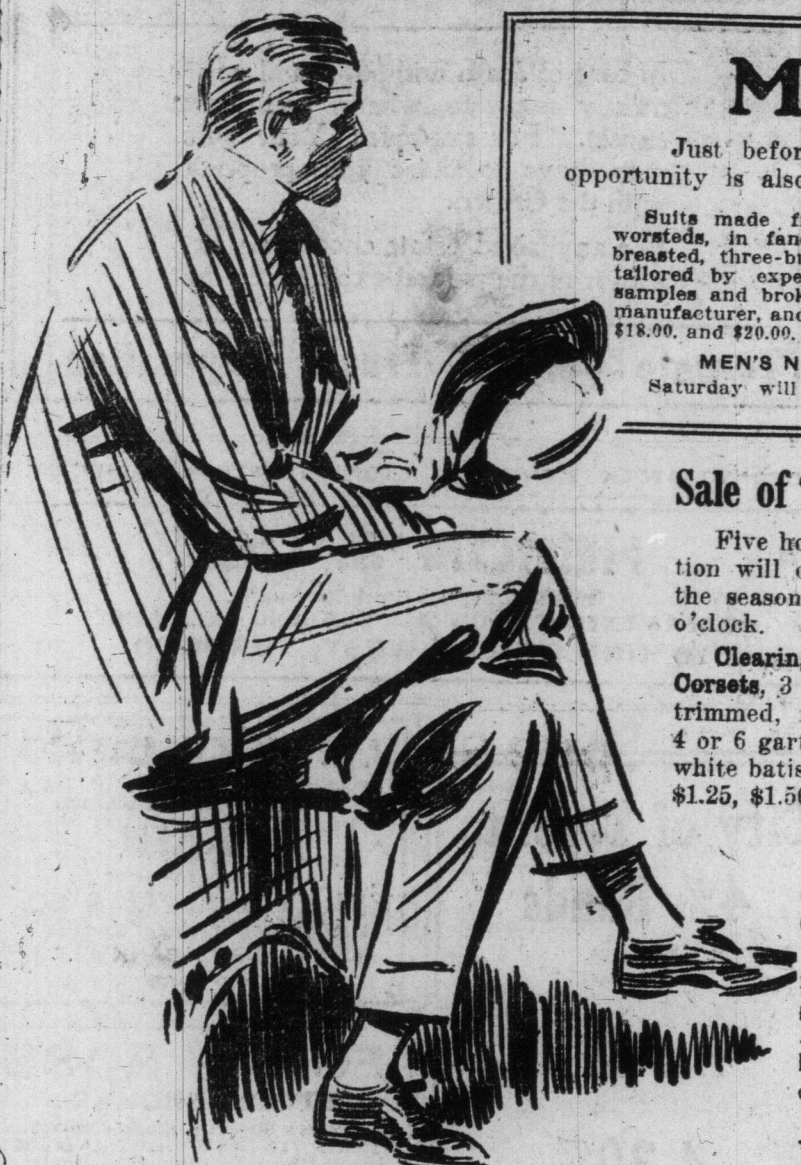
For \$10.00—Fall Overcoat, made from a fine English cheviot cloth, in black and Oxford grey. Cut single-breasted, fly-front style. Beautifully tailored. Price \$10.00.

For \$12.00—One of the finest Fall-weight Overcoats that we have ever offered at this price. The material is a fine English vicuña cloth in black

and medium shade plain grey; fly-front, single-breasted style; fine linings and silk facing; best workmanship. Price \$12.00.

SALE OF MEN'S WORSTED TROUSERS.

These are excellent English worsted trousers in narrow and wide stripe patterns, in good shade of grey. Best workmanship. Stylish trousers, worth \$3.00. Sale price \$1.89.



The store closing at 1 p.m. Saturday, our regular hot dinner will not be served. Cold Lunch from 11 to 1 p.m. Cold Ham, Sliced Tomatoes, Bread and Butter, Ice Cream and Cake, Tea or Coffee. 30 CENTS

Sale of "D & A" and "Royale" Corsets

Five hours of the busiest-kind in the Corset Section will celebrate the last summer half-holiday of the season. Phone orders filled if before eleven o'clock.

Clearing 600 Pairs Handsome D. and A. or Royale Corsets, 3 beautiful models, lace or silk embroidery trimmed, medium or low bust, extra long styles, 4 or 6 garters, finest rust-proof boning; all made in white batiste. Sizes 18 to 26 inches. Regular prices \$1.25, \$1.50, and \$2.00 a pair. Saturday, a pair, 89c.

WOMEN'S COAT SWEATERS.

A rush clearance of Women's Splendid Coat Sweaters. Come at eight o'clock. Can't promise to fill phone or mail orders.

90 only, Ladies' Coat Sweaters, heavy rope-knit wool, colors cream, white, or grey; 2 pockets. V neck or high neck. All perfect fitting coats. Sizes 32 to 40 bust. Regular price \$2.25 each. Saturday, each \$1.25.

To Be Made a Millionaire

Next Monday (Labor Day) being a statutory holiday, this

Store Will Be Closed

It will be Citizens' Day at the Great National Exhibition, and we invite everybody to join us in helping to

Boost the Fair to the Million Mark

The Exhibition management have made an attendance of one million the objective for this year, and every last member of the Simpson organization intends to be counted in that number.

Meet us at the Fair on Monday. The store is closed on Saturday at 1 p.m., as usual, during the summer months.

Men's Negliges 95 Cents

About three thousand of them, ranging in price from \$1.25 to \$2.00, all styles, newest designs, best makes. Buy them Saturday for, each, 95c.

1,000 garments of Men's English Natural Wool Underwear, in a heavy weight, made double-breasted style, light color, eiderdown finish on the inside; guaranteed absolutely unshrinkable. All sizes. Regularly \$1.25. Saturday, \$1.00.

200 Men's Sweater Coats, in a good variety of colors. Some with high double storm collars; others Varsity shape, and a lot made waistcoat style with piped edges. These are a few left from last season and cannot be duplicated. The regular prices are \$2.50, \$3.00, and \$3.50. Saturday morning \$1.98.

New Fall Millinery White and Light Felt Hats for Young Women

A great variety of the best styles in New York Felt Hats will be sold at a price that will make Saturday morning a record day. These hats come in white, pearl, sky, pink, or champagne, and are chic, for the college girl or the young lady leaving town for the holiday. Big variety at \$2.25.

Last Day of the Black Silk Sale

Four wonderful values as a climax in bargain-giving:

Black Satin Paillette—400 yards of our regular \$1.25 quality, in a 36-inch, skein-dyed black; a firm, weighty weave that can be depended on for wear. On sale Saturday morning, per yard, 84c.

Black Satin de Chene—A fine, soft, finish in this fashionable weave. A perfect black, and well finished, 39 inches wide. A bargain Saturday, per yard, \$1.10.

New Black Silk-Satin—An opportunity to get one of this season's most fashionable fabrics at a big reduction. A rich, pure silk-satin in a deep, full black, 40 inches wide. Per yard \$1.33.

Regularly \$1.75 Black Mousseline Satin, 40 inches wide, for \$1.53 per yard—A soft dress satin of guaranteed quality; bright and lustrous dye. Yard \$1.53.

Black Suitings and Dress Goods Specially Priced

3,000 yards of Black English and French Dress Fabrics, including all-wool Sea Toys, Panolis, Hen-Fabrics, all-wool Voles, silk striped Voles, Panamas, English Worsteds, etc. Regular values \$30 and \$1.90 per yard. Guaranteed quality and best permanent dye and finish. 44 to 54 inches wide. Saturday, per yard, 73c.

A SPECIAL IN BLACK BROADCLOTH.

QUALITY FOR, PER YARD, \$1.10. This is a very special purchase from a leading French maker, in fine suade finish, made from specially selected pure Bohemian yarns, and guaranteed thoroughly shrunken and spot-proof; correct weight for smart tailored suits. Beautiful rich, unfading black, 52 inches wide. Saturday, \$1.10.

Gloves and Hosiery

Women's Finest Quality Lisle Thread Hose, sheer fine weave, in a great variety of plain lisle in colors, including black, tan, and black with colored tops; best finish. Sizes 9 1/2 to 10. 25c grade. Saturday, 19c pair, 3 pairs \$5c.

Men's Two-tone All-wool Cashmere Half Hose, showing red, white, and blue colors under a fine ribbed cashmere; dressy and smart. Sizes 9 1/2 to 11. 50c value. Saturday, 35c pair, 3 pairs \$1.00.

Men's "Pan-Angle" All-wool Cashmere Sox, second quality, still wear equal to firsts; black and colors; fine close finish. All sizes. 50c value. Saturday, 29c.

Women's Kid Gloves, soft pliable skin, 2 dome fasteners, round sewn seam, neat self-stitched back; perfect fitting and finish; shades of black, tan, and white. Sizes complete. Special value Saturday, pair, 35c.

Women's Elbow Length Real Silk Gloves, 2 dome fasteners, opening at wrist, double tipped fingers, good weight; close, firm finish. Sizes 5 to 7 only, white only. Special value Saturday, pair, 69c.

Women's 20c Vests, Saturday 10c

These Vests represent one of our regular lines that we have never sold for less than twenty cents apiece. They go your way Saturday for ten cents. We need the room they take up. Phone Orders Taken.

900 Women's Vests, fine ribbed white cotton, low neck, short or no sleeves, beading and draw ribbon in neck and arms. Sizes 32 to 40 bust. Regular price 20c each. Saturday, each 10c.

Optical Specials Saturday Morning

Finest gold-filled glasses, various styles, \$4.50 and \$5.00 values, for \$2.45.

A Good Pair of Glasses in aluminum frames \$1.00.

Glasses Fitted by experienced specialists under the Simpson guarantee of perfect satisfaction. Double vision and compound lenses cost a little more. Readers, regularly \$1.50 for 75c; Compases, regularly 35c and 40c; for 25c and 30c.

Magnifiers, from 15c up. Eye Shades, 15c. (Optical Parlors, Second Floor, Yonge street side).

A Special in Rain-coats for Girls

The school season and the wet weather recommends their purchase. Made of splendid quality rubberized twill in navy and tan, double-breasted, with turn-over collar, fastens close up to throat. Raglan sleeves with adjustable tab at wrist. Coat is lined across shoulders. Sizes 6 to 14 years. Saturday selling, \$7.25.

SUITE SPECIAL AT \$12.85.

Of imported tweeds, in greys, green, blues, brown and stripe mixtures. Coats lined throughout with silk; some cut in the new Norfolk styles, others plain tailored. Skirts show the new gored pattern with straight lines. Misses' and women's sizes. Splendid value \$12.85.

IMPORTED COATS, \$3.50.

Just received from Germany, a good assortment of these coats for Fall and Winter wear, in grey and tan tweeds. Cut in plain tailored style on semi-fitting lines, with notched collar and tailored sleeves. Very special value at \$3.50.

SERVICEABLE SKIRT FOR WOMEN, \$2.75.

Made from imported vicuña cloth in grey or navy. Neat, plain-tailored style, with high waist-line, plain front and back panels, cut in one-sided effect. A full assortment of sizes. Special value \$2.75.

The Store of Magnificent - Progress -

The Simpson Store has attained its majority with the completion of its wonderful fireproof building, modern in every way, convenient, full of air and sunshine. Canada's finest store.

The values sketched here for Saturday's selling are based on marvelous resources for buying in the best markets of the world.

The Rest Rooms, Dining and Tea Rooms, Parcel Check Room, Telephone and Telegraph are at your service.

Music daily in the new Chinese Pagoda on the main floor. Come and welcome.



Blankets and Linens

HEMSTITCHED SHEETS, PER PAIR, \$1.35.

Bleached English Hemstitched Sheets, beautiful fine quality, closely woven. Size 70 x 90. Special, Saturday, pair, \$1.98.

Double Bed Unshrinkable White Wool Blankets, size 66 x 82. Regularly \$3.65, special Saturday, \$2.88.

White All-wool Blankets, nice soft make, close even nap, weight seven lbs., size 64 x 84, will wash and wear well. Regularly \$4.75. Saturday, pair, \$3.95.

Individual Towels, made of plain linen, crash, size 21 x 21, clearing Saturday, dozen, 90c.

1,000 yards of Heavy English Flannel in blue only, soft, durable make, 32 inches wide. Regularly 10c and 12 1/2c, special, Saturday, yd., 7 1/2c. Phone Linen Dept., Second Floor.

The Last Half Day OF THE AUGUST Furniture Sale

will be one huge value giving to clear out the remaining sale stocks.

Prices have been set that are many of them below the factory cost, and the quality is absolutely the same as we have been supplying during the great sale month.

When you consider the immense quantities that have been sold from our floors this month you will appreciate how many odd pieces must be left from broken sets. Come and see what there is you need in your home.

For Club & Presentation Committees

On Saturday morning we offer the following at half-price:

- 2 12-inch Punch Bowls and Stands. Regularly \$100.00 each, for \$50.00.
- 1 12-inch Punch Bowl and Stand, small crack in side. Regularly \$100.00, for \$27.50.
- 1 12-inch Punch Bowl and Stand. Regularly \$125.00, for \$62.50.
- 2 Punch Bowls and Stands. Regularly each \$80.00, for \$40.00.
- 1 14-inch Water Jug. Regularly \$70.00, for \$35.00.
- 1 16-inch Vase. Regularly \$40.00, for \$20.00.
- 2 14-inch Vases. Regularly each \$35.00, for \$12.50.

And a few smaller pieces. These are all beautifully and perfectly cut on finest glass blanks, and really offer an exceptional chance to secure something quite out of the ordinary run of gifts and prizes. Hotelkeepers will find these pieces of unusual decorative value.

(China Department.)

Rush Prices For Boots and Oxfords

Big Reductions in High-grade Boots and Oxfords to Command Your Attendance at 8 o'clock. (See Yonge St. Windows)

WOMEN'S \$3.50, \$4, AND \$4.50 BOOTS AND OXFORDS, \$1.99.

900 pairs Women's High-grade Canadian and American Boots and Oxfords, in all the newest lasts and styles, in black suede, tan calf, vic, patent pony, velvet, and black satin; dull calf, self, and cloth tops; button and blucher. High, medium, and low heels. (Sizes 2 to 8 in A, B, C, D, and E widths. Saturday, 8 o'clock \$1.99.

MEN'S \$3.50 TO \$5.00 BOOTS, \$2.95.

1,200 pairs Men's High-grade Button and Lace Style Boots, every pair made by the Good-year welt process, in patent calf, doggola kid, gunmetal, and tan Russia calf, with self and fancy uppers; high, medium, and low heels; high or receding toes. These are all new Fall styles and perfect in every way. Sizes 5 to 10. Saturday, 8 o'clock \$2.95.

The Basement HARDWARE

Carpenters' Bench Axes, Regularly 75c. Saturday for 50c. Lathing Hatchets, cast steel. Regularly 45c. Saturday for 35c. Shingling Hatchets, cast steel. Regularly 40c. Saturday, for 30c. Solid Cast Steel Claw Hammers, with chiseled handles. Regularly \$1.00. Saturday, for 75c. Yankee Spiral Hatchet Screw Driver. Regularly \$1.50. Saturday, for 1.12c. Compass Saws, 12-inch. Regularly 10c. Saturday, for 7c. Compass Saws, 14-inch. Regularly 25c. Saturday, for 17c. Zig-Zag Rules, 2-foot. Regularly 15c. Saturday, for 10c; 3-foot, reg. 20c; for 15c; 4-foot, reg. 20c, for 15c.

BATHROOM FIXTURE SECTION. Tumbler Holders, best nickel-plated on brass. Regularly 45c. Saturday for 35c. Combination Soap and Tumbler Holders, with glass. Regularly \$1.25. Saturday, for 90c. Toilet Paper Holders, chiseled roller. Regularly 35c. Saturday, for 25c.

CUTLERY SECTION. Sheffield Steel Jack Knives, two and three blades, stag and bone handles, brass lined. Saturday Sale price. Simpson Special Razors, best Sheffield steel, fancy handles, 5 blades. Regular value \$1.50. Saturday, for 95c.

The Groceries

2,000 lbs. Finest Creamery Butter, White Clover Brand. per lb., 32c. Toasted Cornflakes, 3 packages 25c. Leaf Sugar, 3 1/2 lbs. 25c. Finest Canned Corn, 3 tins 25c. Imported French Peas, 1/2 lb. tin 25c. Blush Red Salmon, per tin 11c. Cartons H. P. Sauce, per bottle 12c. Macaroni's Pickles, Mixed, Chow, and Walnuts. per bottle 10c. Clark's Pork and Beans in Chili Sauce, large tin 10c. Canned Fruit—Strawberries, Cherries, Peaches, and Pears. per tin 15c. Baker's Cocoa, 1/2 lb. tin 25c. Crossed Fish Brand Sardines, 2 tins 24c. 500 lbs. Fresh Peel Cake, per tin 15c. Fancy Mixed Biscuits, per lb. 15c. Candy—500 Boxes Chocolates and Bon Bons. A 20c value. per box 20c.

The Cameras Main Floor

Inspect our \$3.00 Roll Film Camera, takes a picture 2 1/2 x 4 1/4. Made in two patterns; strong and thoroughly reliable. See Counter beside Yonge Street elevators.

THE STORE CLOSING AT 1 P.M. SATURDAY AND REMAINS CLOSED SATURDAY AFTERNOON AND MONDAY

The Robert SIMPSON Company Limited